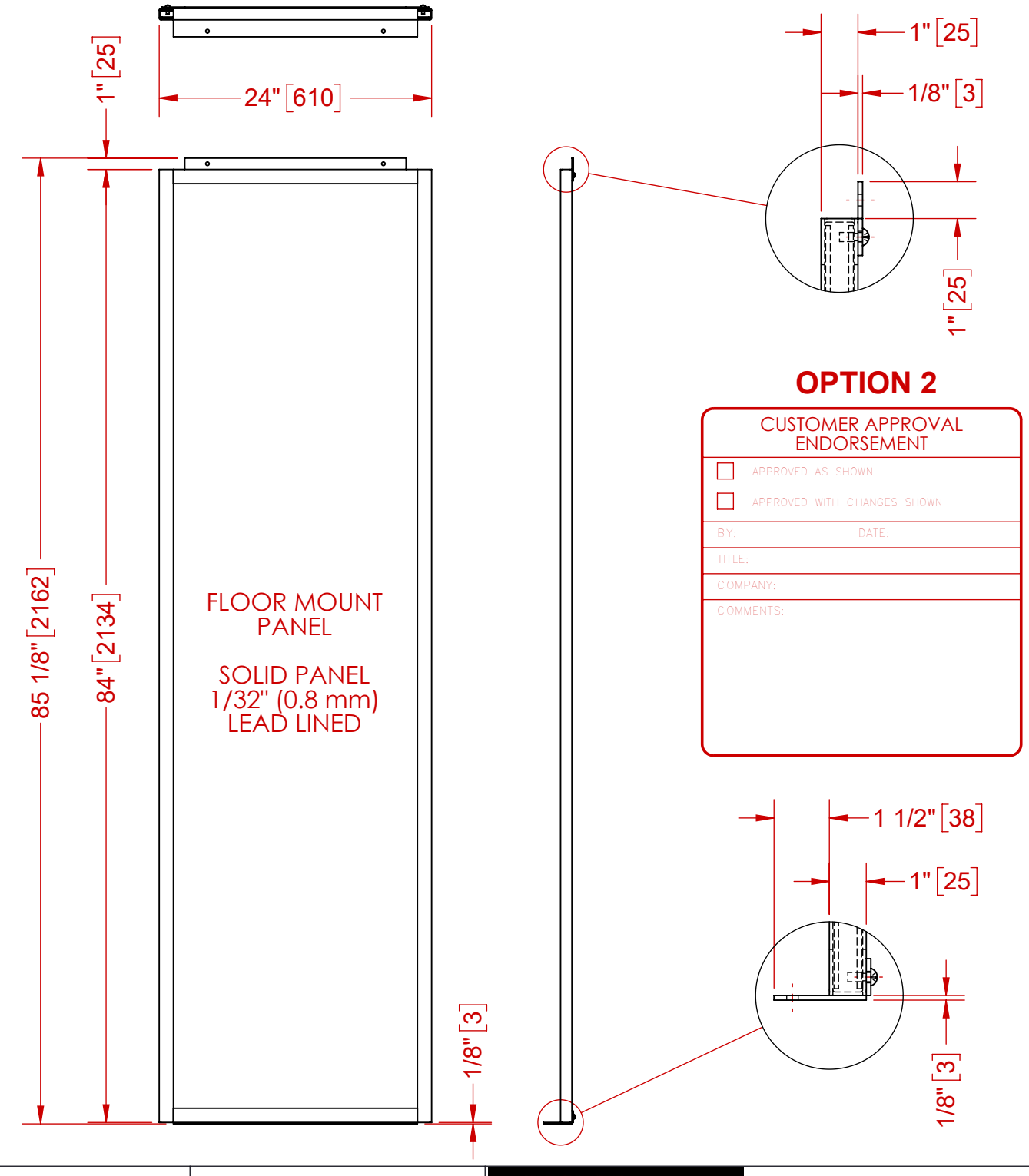
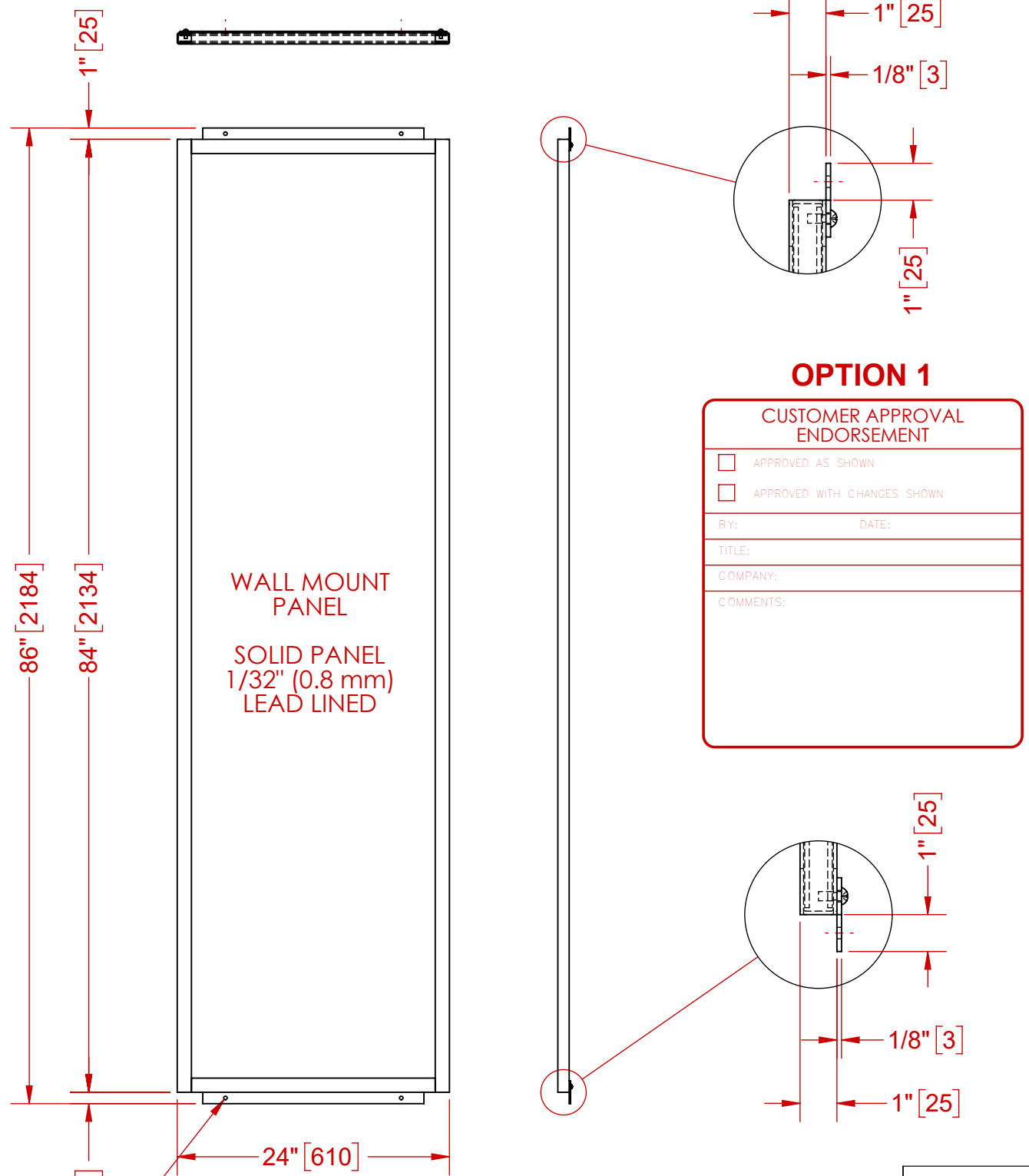


# OPTION 1 - WALL MOUNT

# OPTION 2 - FLOOR MOUNT



**MOUNTING HOLES SHOWN FOR REFERENCE ONLY. TO BE FIELD DRILLED**  
**TYP. TOP & BOTTOM ALL PANELS, TYP. BOTH OPTIONS**

**NOTES:**

- 1) ALL UNITS ARE INCHES (mm) UNLESS OTHERWISE SPECIFIED
- 2) CUSTOMER TO APPROVE EITHER OPTION 1 OR OPTION 2

UNLESS OTHERWISE SPECIFIED		SolidWorks MAINTAINED DATA CHANGES SHALL BE INCORPORATED ELECTRONICALLY BY THE DESIGN ACTIVITY		<b>Custom Radiation Protection, Shielding and Storage</b>	
DO NOT SCALE DRAWING DIMENSIONS SHOWN IN PARENTHESIS ARE FOR REFERENCE ONLY (X.XX) DIMENSIONS ARE IN INCHES [mm] TOLERANCES APPLY AS SHOWN BELOW .X = ± 0.030 .XX = ± 0.010 .XXX = ± 0.005 FRACTIONS = ± 1/16 ANGLES = ± 0.5°	ALL MACHINED SURFACES TO BE 125° ALL WELD SPECIFICATIONS PER WELD SHOP	MODEL NUMBER:	TITLE: <b>EZ PANEL</b>		
PROPRIETARY NO PART OF THIS DOCUMENT MAY BE REPRODUCED, STORED IN A RETRIEVAL SYSTEM, OR TRANSMITTED IN ANY FORM, WITHOUT THE WRITTEN PERMISSION OF MarShield - Mars Metal Company DIVISION OF Marswell Metal Industries Ltd.		DRAWN BY: M.S.D. DATE: 8/16/2018	CHECKED BY:	CUSTOMER/DEALER:	REVISION: A
		APPROVED:	DATE:	SIZE: B DRAWING NO: <b>MSEZ2484-0.8</b>	SCALE: 1:13 WEIGHT: SHEET 1 OF 1