

CUSTOMER APPROVAL ENDORSEMENT

☐ APPROVED AS SHOWN

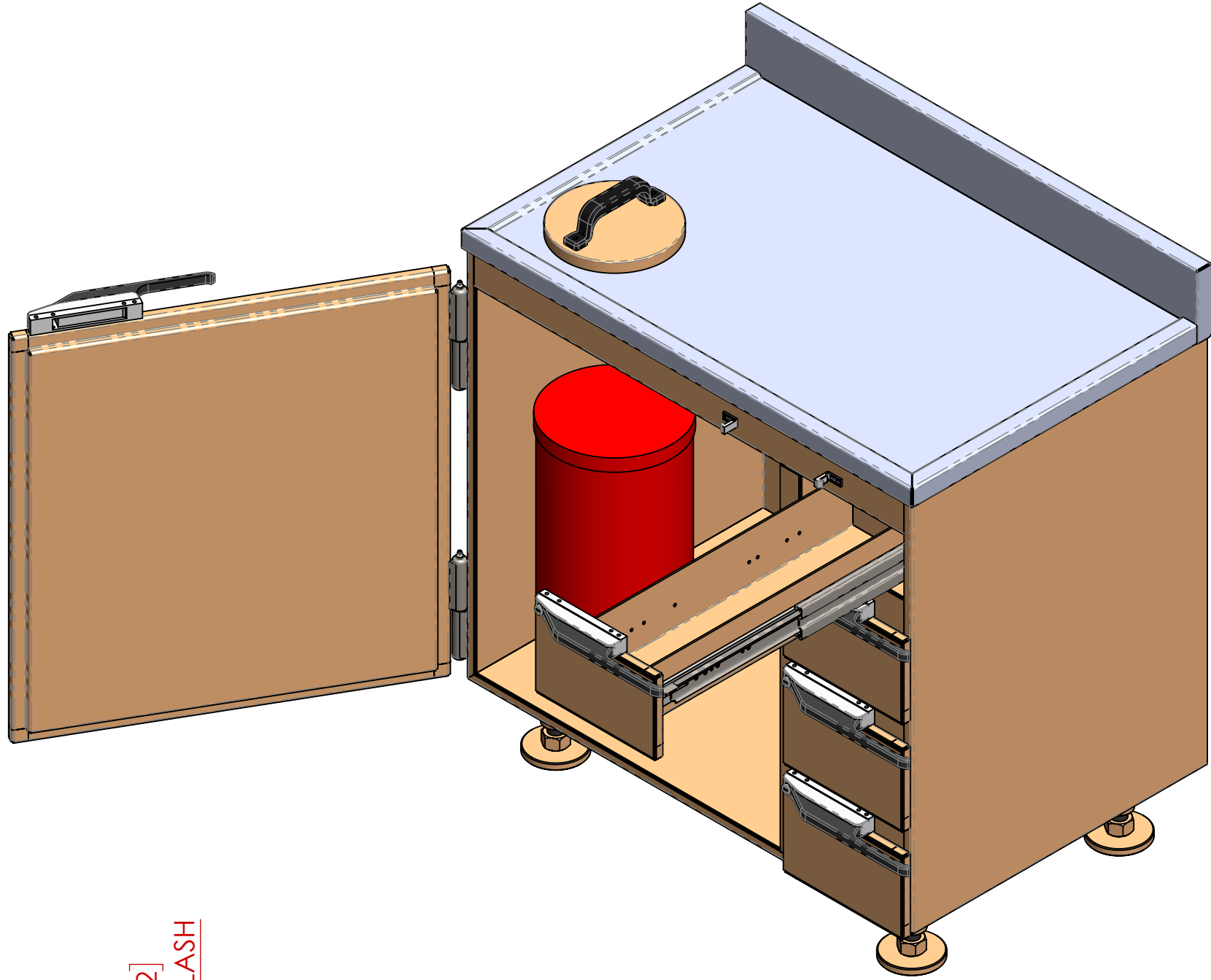
☐ APPROVED WITH CHANGES SHOWN

BY: _____ DATE: _____

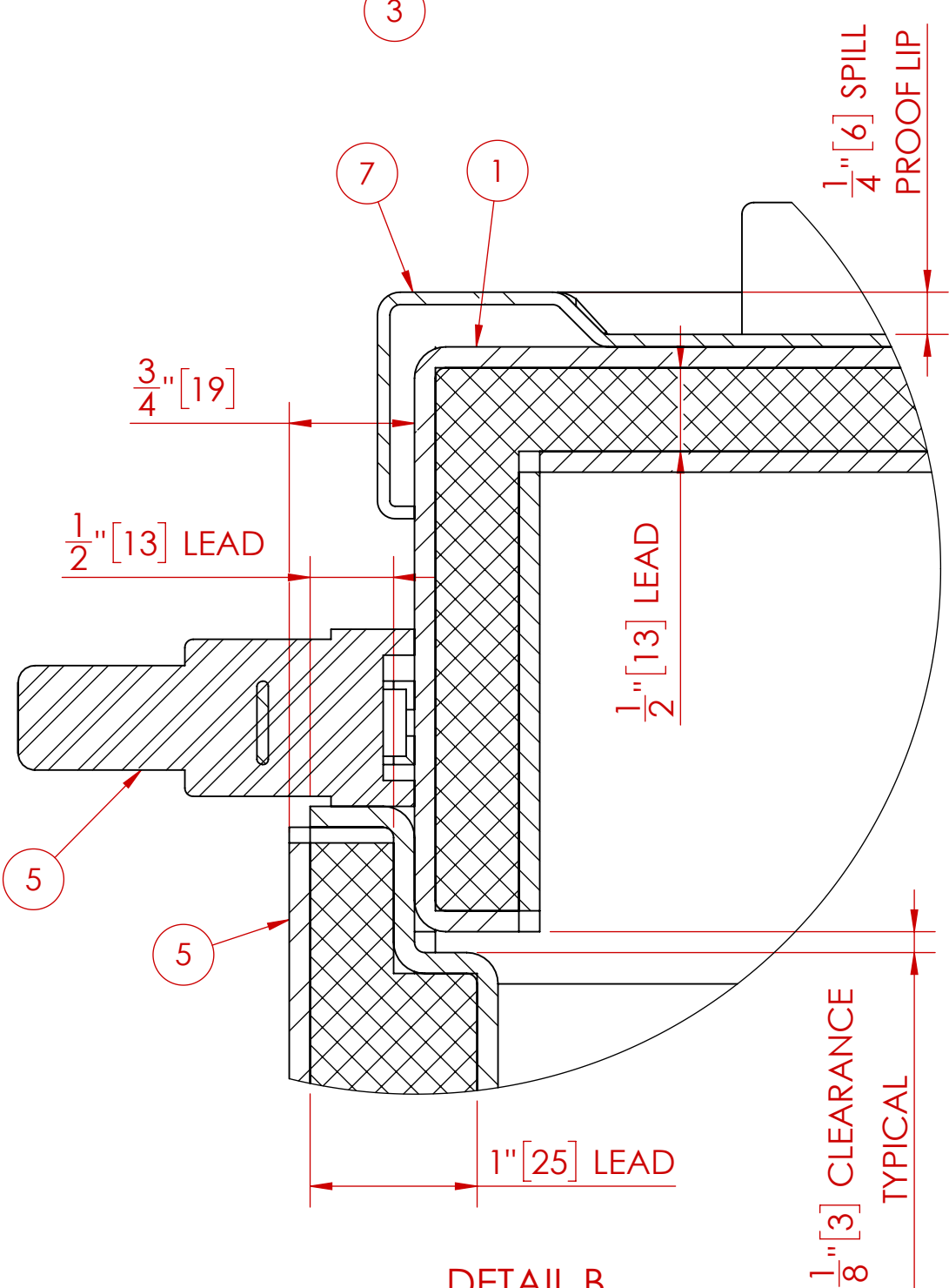
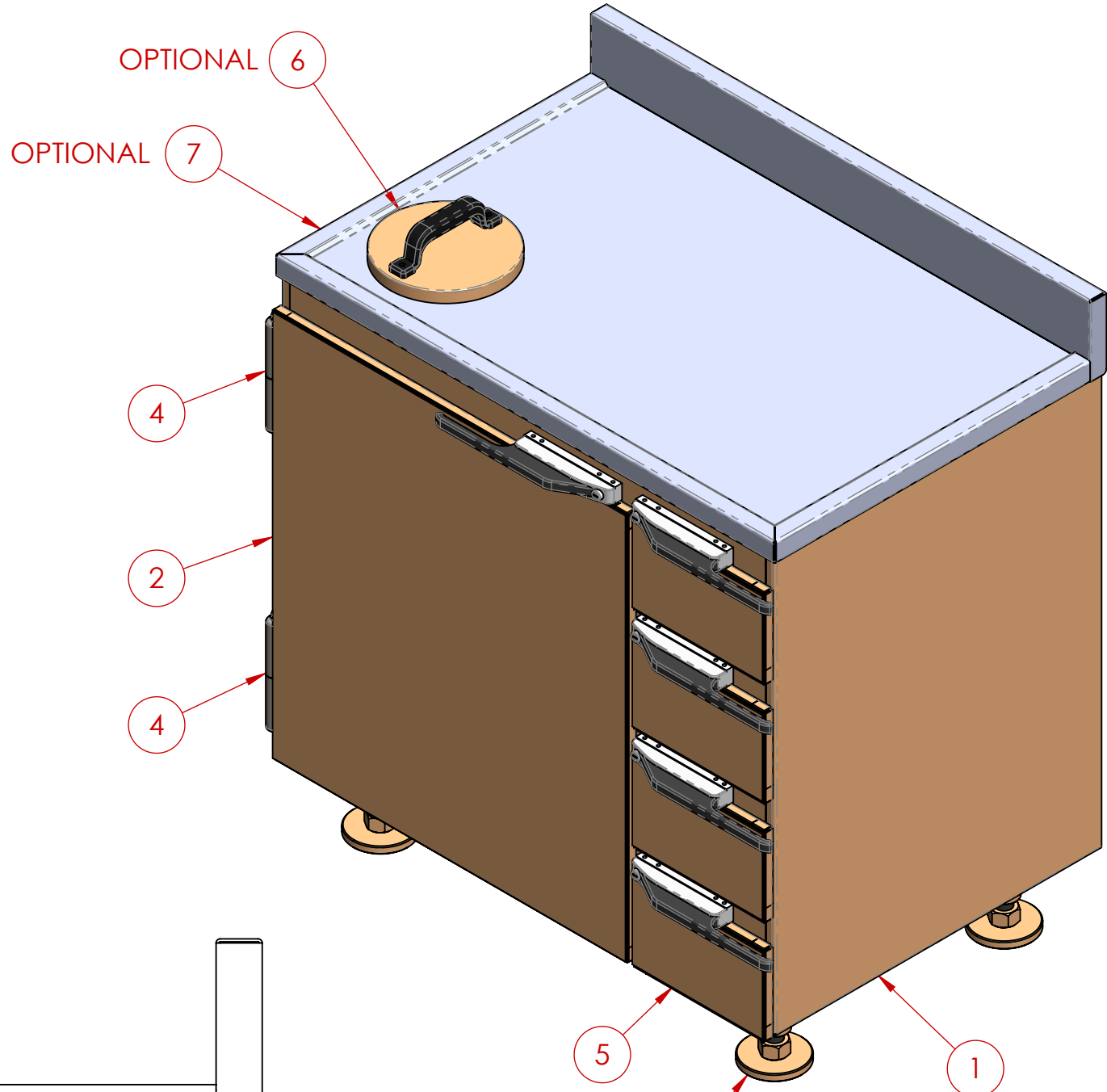
TITLE: _____

COMPANY: _____

COMMENTS: _____



ITEM NO.	QTY	PART NUMBER	DESCRIPTION
1	1	MS-WSC-0.5-01-00	BODY
2	1	MS-DSC-0.5-02-00	DOOR
3	4	MS-DC-0.5-08-00	LEG
4	2	-----	7" HINGE C/W GREASE NIPPLE
5	4	MS-DSC-0.5-03-00	DRAWER
6	1	-----	OPTIONAL SHARPS HOLE C/W LEAD FILLED COVER
7	1	MS-10-04	OPTIONAL CABINET TOP



- NOTES:**
1. ALL UNITS ARE INCHES [mm] UNLESS OTHERWISE SPECIFIED
 2. ITEM 6 (CABINET TOP) IS OPTIONAL
 3. ITEM 7 (SHARPS HOLE & COVER) IS OPTIONAL

TOTAL LEAD WEIGHT	TOTAL CABINET WEIGHT (INCLUDING LEAD)
1,240 LBS. (564 kg)	1,880 LBS. (855 kg)

REV.	DESCRIPTION	DATE	APPROVED
C	HANDLE/LATCH STYLE CHANGED (WAS CURVED)	7/16/2019	M.S.D.
B	ADDED WEIGHTS TABLE	2/27/2013	M.S.D.
A	RELEASED FOR CUSTOMER REVIEW & APPROVAL	1/17/2013	M.S.D.
REV.	DESCRIPTION	DATE	APPROVED

UNLESS OTHERWISE SPECIFIED			
DO NOT SCALE DRAWING DIMENSIONS SHOWN IN PARENTHESES ARE FOR REFERENCE ONLY (XXX) DIMENSIONS ARE IN INCHES (mm) TOLERANCES APPLY AS SHOWN BELOW X = ± 0.005 XX = ± 0.010 XXX = ± 0.015 FRACTIONS = ± 0.1/16 ANGLES = ± 0.5°		ALL MACHINED SURFACES TO BE $\sqrt{10}$ ALL WELD SPECIFICATIONS PER WELD SHOP	
SolidWorks MAINTAINED DATA CHANGES SHALL BE INCORPORATED ELECTRONICALLY BY THE DESIGN ACTIVITY			
MODEL NUMBER:			
DRAWN BY: M.S.D. DATE: 1/16/2013			
CHECKED BY: DATE:			
APPROVED: DATE:			
NO PART OF THIS DOCUMENT MAY BE REPRODUCED, STORED IN A RETRIEVAL SYSTEM, OR TRANSMITTED IN ANY FORM, WITHOUT THE WRITTEN PERMISSION OF MarShield - Mars Metal Company DIVISION OF Marshell Metal Industries Ltd.			
TITLE: WASTE & STORAGE CABINET ASSEMBLY		CUSTOMER/DEALER:	
D MS-WSC-0.5-36.5-24-36.5		C	
SCALE: 1:4		SHEET 1 OF 1	