

ITEM NO.	QTY	PART NUMBER	DESCRIPTION
1	1	MS-WC-0.5-01-00	BODY
2	1	MS-DC-0.5-02-00	DOOR
3	4	MS-DC-0.5-08-00	LEG
4	2	----	7" HINGE C/W GREASE NIPPLE
5	1	MS-10-05	OPTIONAL CABINET TOP
6	1	----	OPTIONAL SHARPS HOLE C/W LEAD FILLED COVER

CUSTOMER APPROVAL ENDORSEMENT

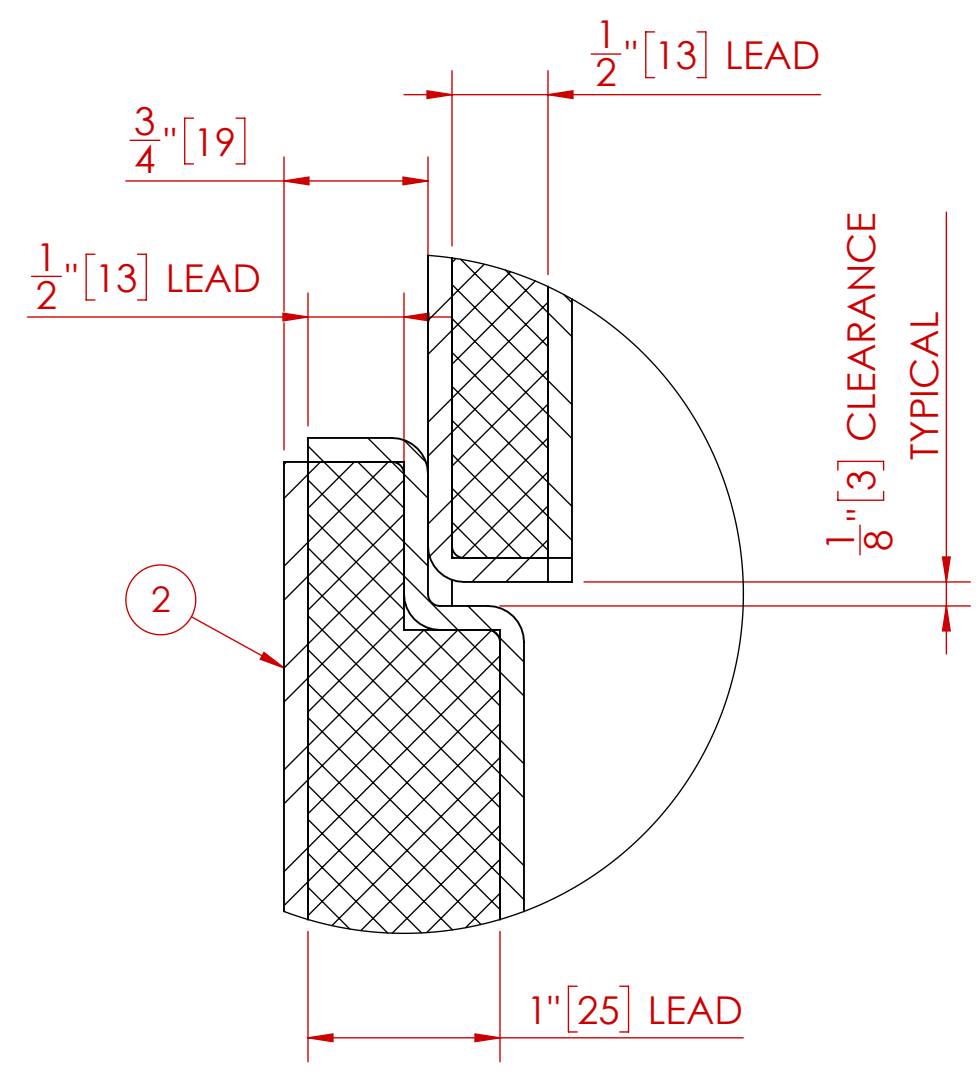
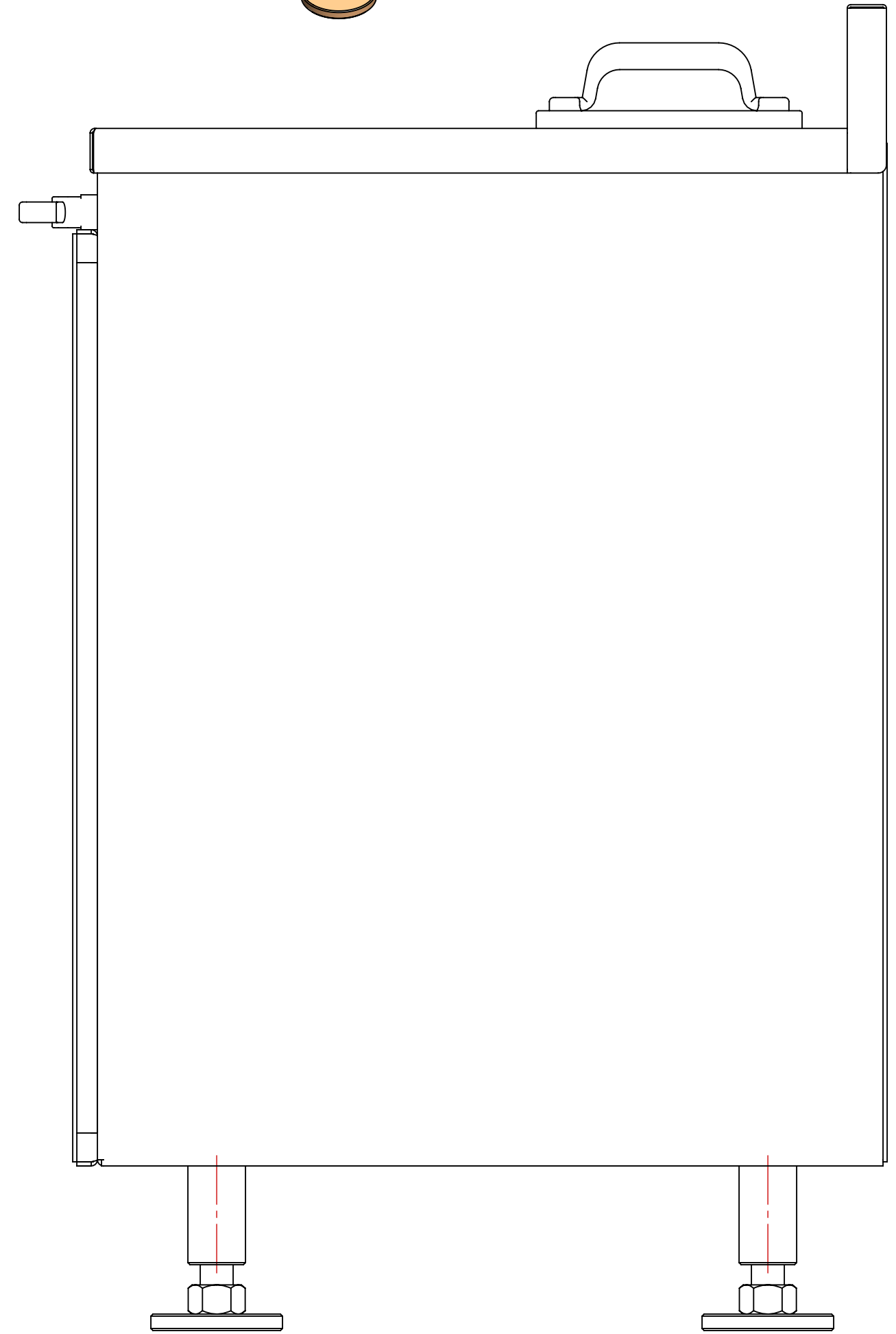
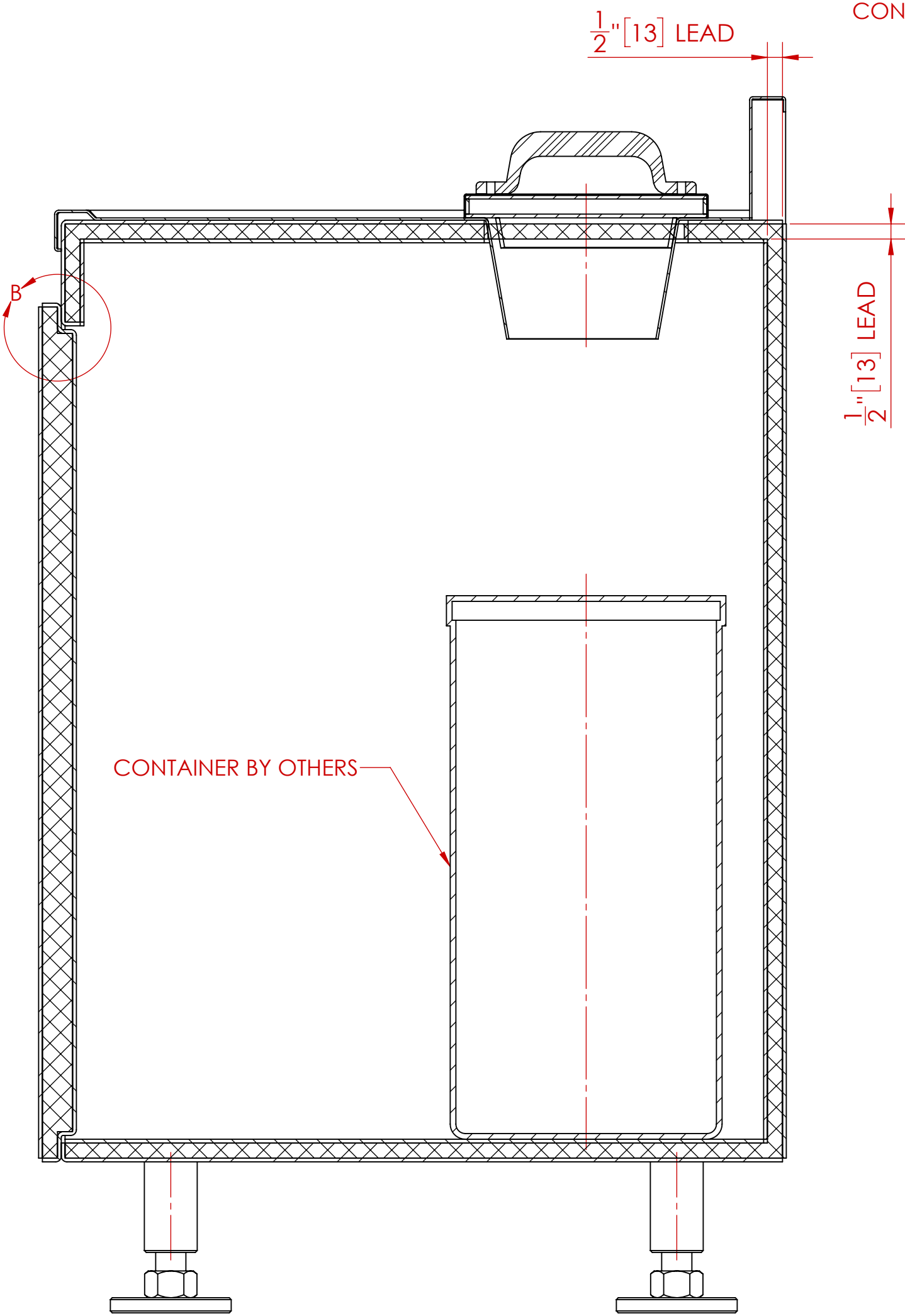
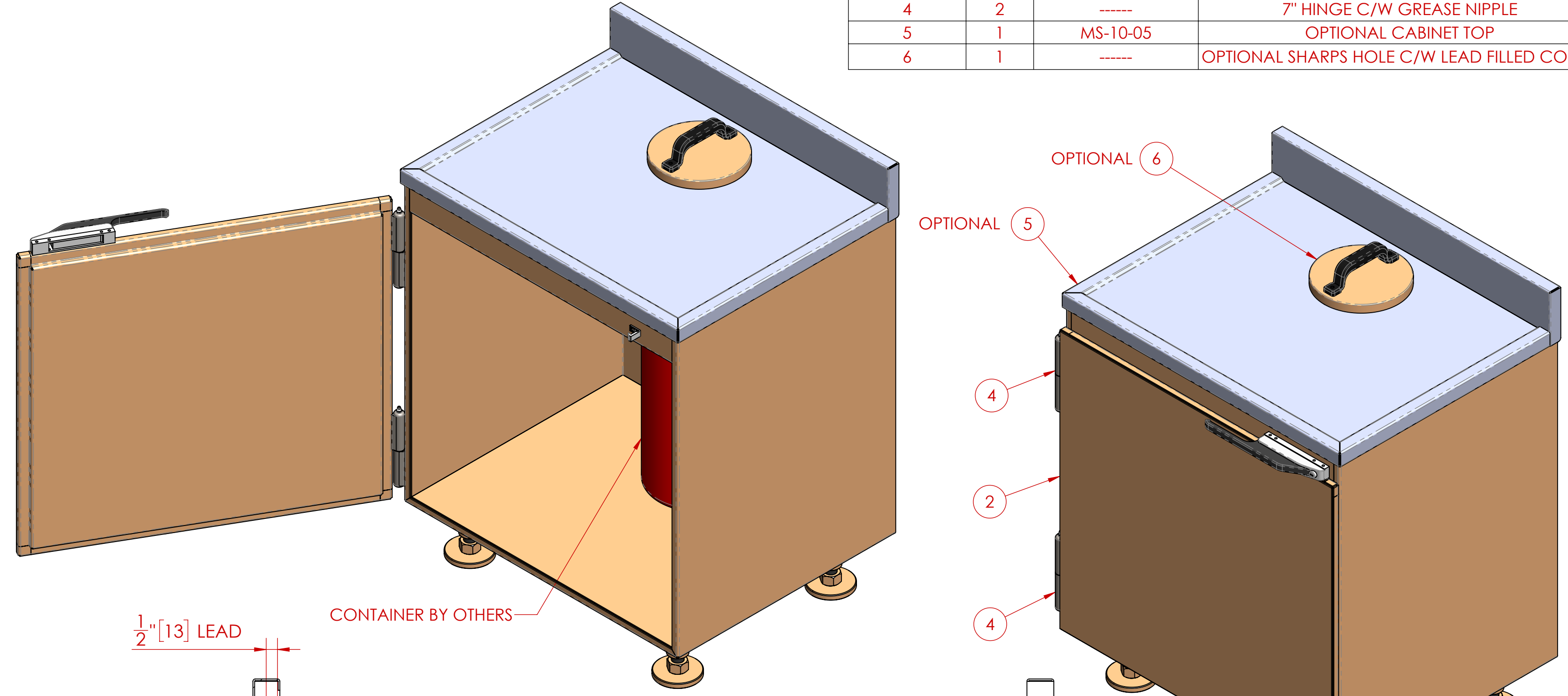
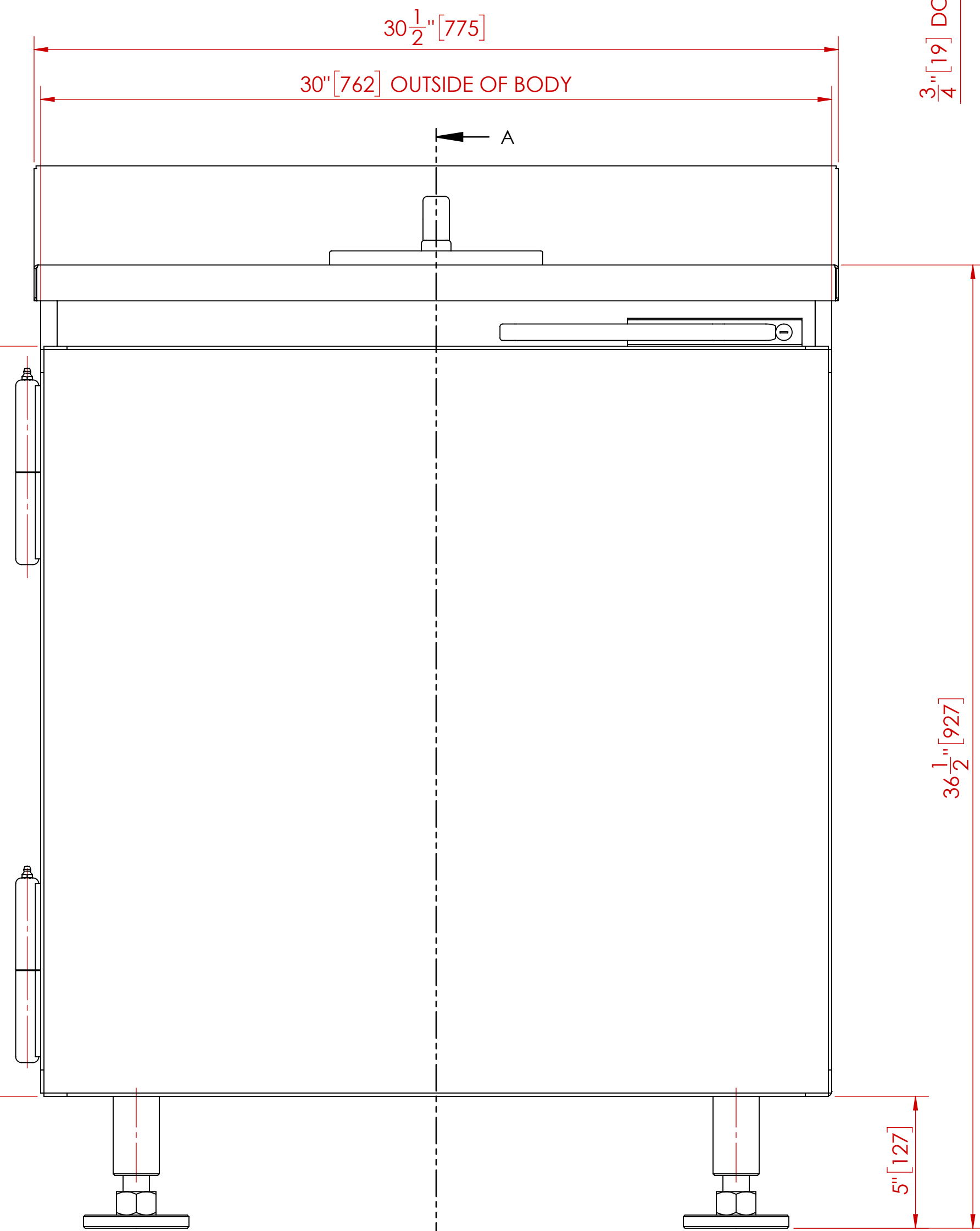
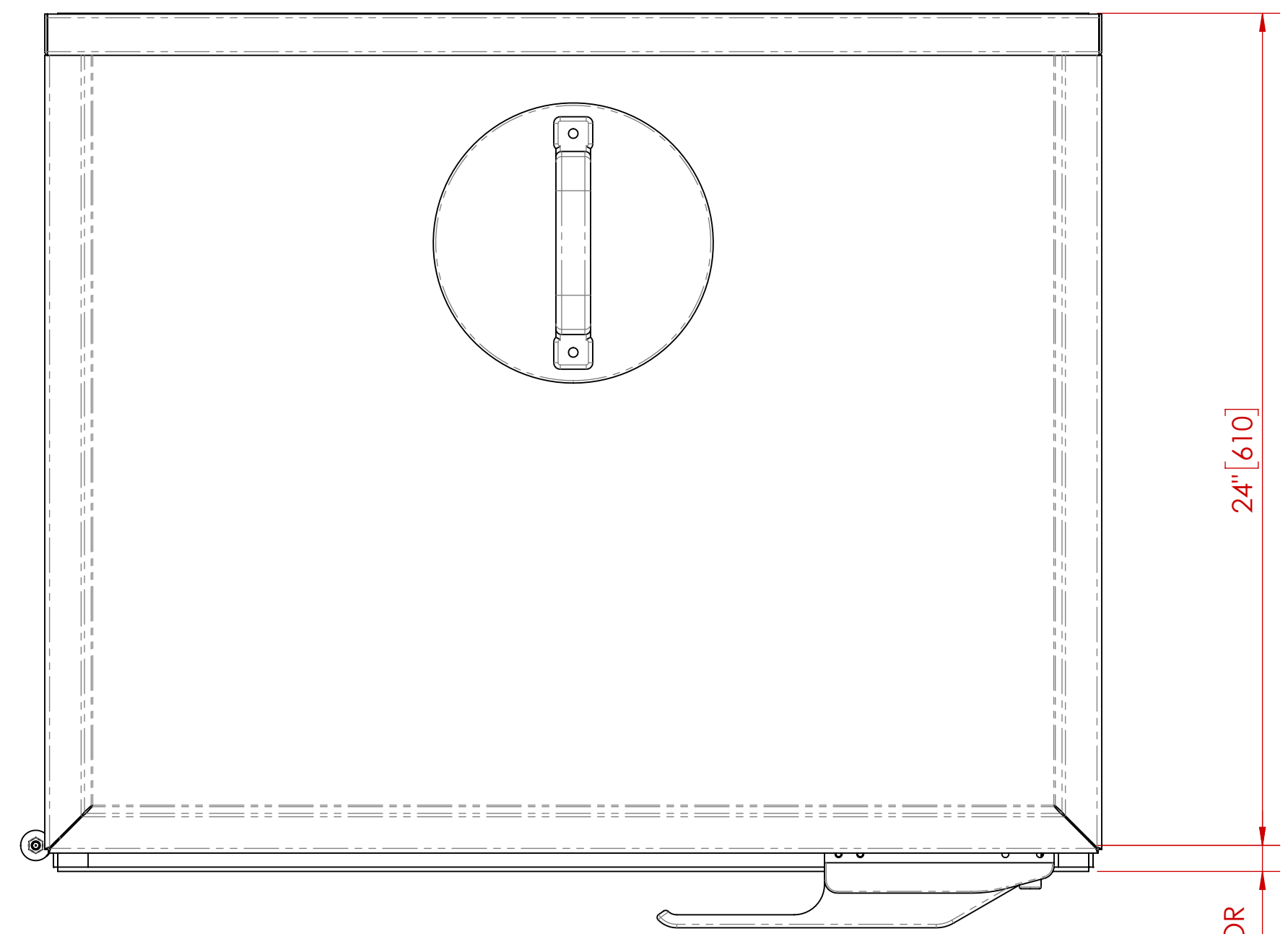
APPROVED AS SHOWN
 APPROVED WITH CHANGES SHOWN

BY: _____ DATE: _____

TITLE: _____

COMPANY: _____

COMMENTS: _____



DETAIL B
SCALE 1:1

- NOTES:**
- ALL UNITS ARE INCHES [mm] UNLESS OTHERWISE SPECIFIED
 - ITEM 5 (CABINET TOP) IS OPTIONAL
 - ITEM 6 (SHARPS HOLE & COVER) IS OPTIONAL

TOTAL LEAD WEIGHT	TOTAL CABINET WEIGHT (INCLUDING LEAD)
1,085 LBS. (493 kg)	1,465 LBS. (666 kg)

REV.	DESCRIPTION	DATE	APPROVED
C	HANDLE/LATCH STYLE CHANGED (WAS CURVED)	7/16/2019	M.S.D.
B	ADDED WEIGHTS TABLE	2/27/2013	M.S.D.
A	RELEASED FOR CUSTOMER REVIEW & APPROVAL	1/17/2013	M.S.D.

UNLESS OTHERWISE SPECIFIED

DO NOT SCALE DRAWING DIMENSIONS SHOWN PARENTS ARE FOR REFERENCE ONLY (XX) DIMENSIONS ARE IN INCHES (mm) TOLERANCES APPLY AS SHOWN BELOW
X = ±0.005
XX = ±0.010
XXX = ±0.020
ANGLES ±0.1°/16

ALL MACHINED SURFACES TO BE $\sqrt{\text{V}}$

ALL WELD SPECIFICATIONS PER WELD SHOP

PROPRIETARY
NO PART OF THIS DOCUMENT MAY BE REPRODUCED, STORED IN A RETRIEVAL SYSTEM, OR TRANSMITTED IN ANY FORM, WITHOUT THE WRITTEN PERMISSION OF MarShield - MGR Metal Company DIVISION OF Marshall Metal Industries Ltd.

SolidWorks MAINTAINED DATA CHANGES SHALL BE INCORPORATED ELECTRONICALLY BY THE DESIGN ACTIVITY

MODEL NUMBER: _____

TITLE: **WASTE CABINET ASSEMBLY**

CUSTOMER/DEALER: _____

DRAWN BY: M.S.D. DATE: 1/16/2013

CHECKED BY: _____ DATE: _____

APPROVED BY: _____ DATE: _____

SCALE: 1:4 HEIGHT: 1

SHEET 1 OF 1

MarShield Custom Radiation Protection, Shielding and Storage