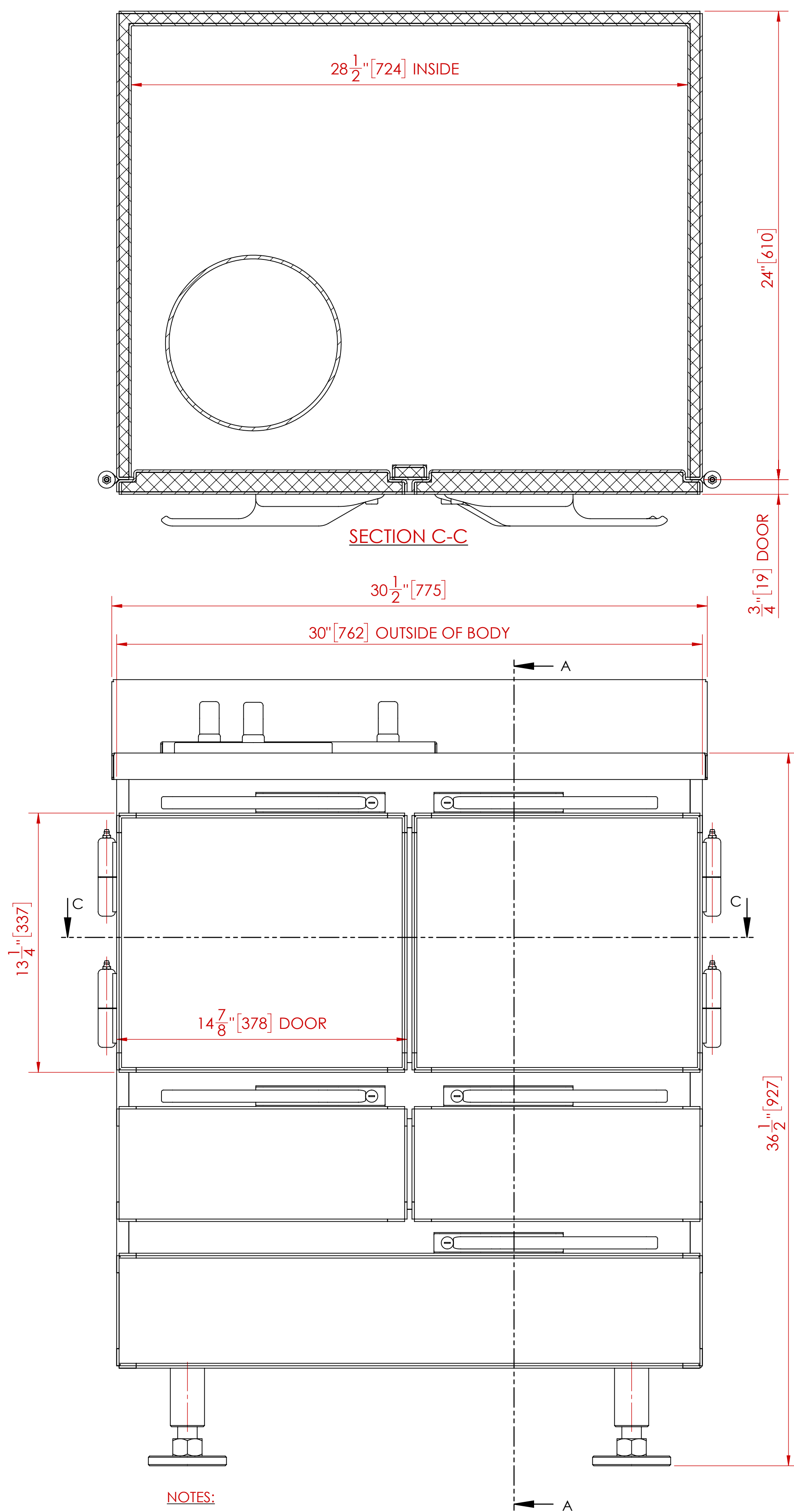
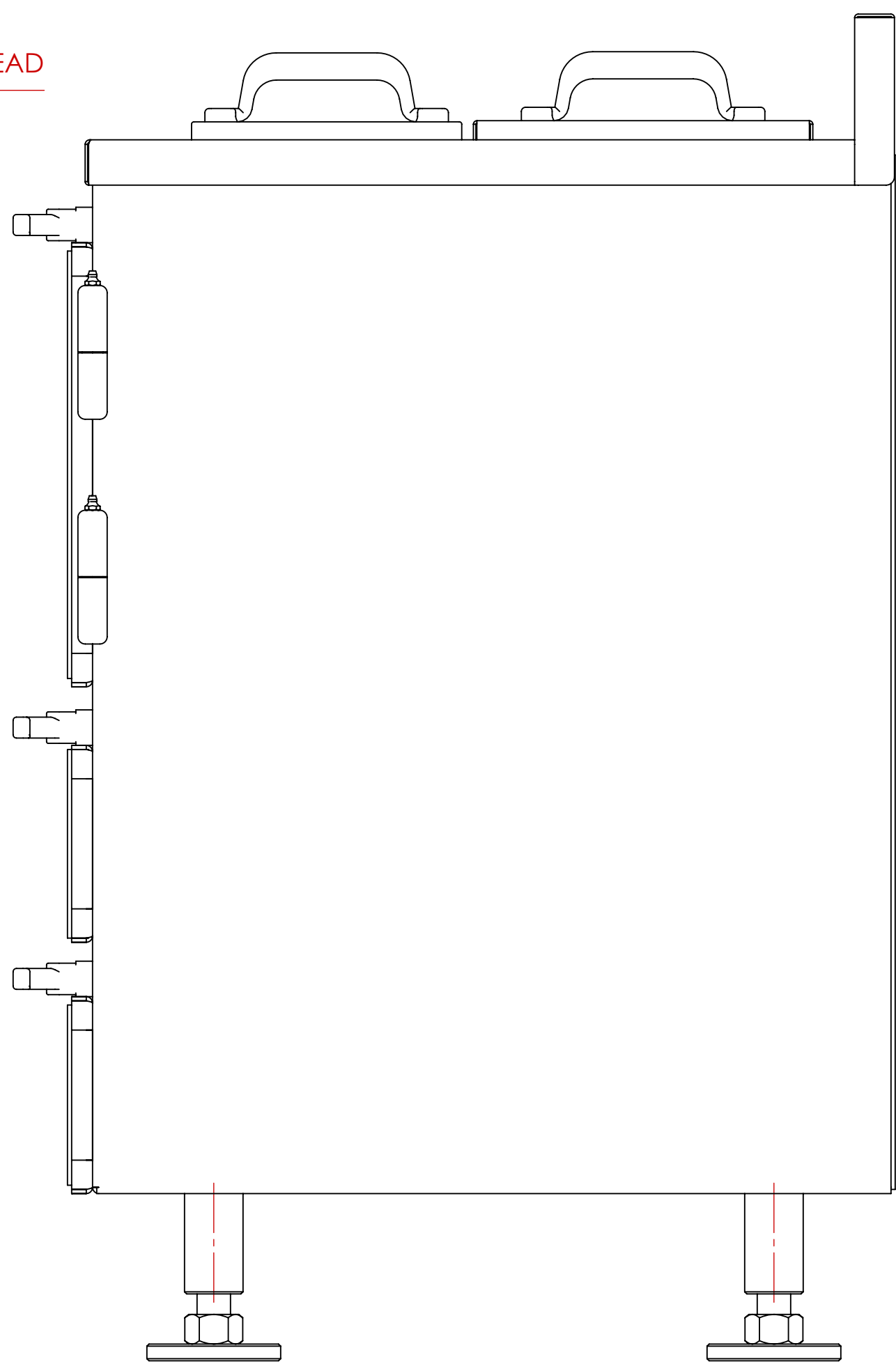
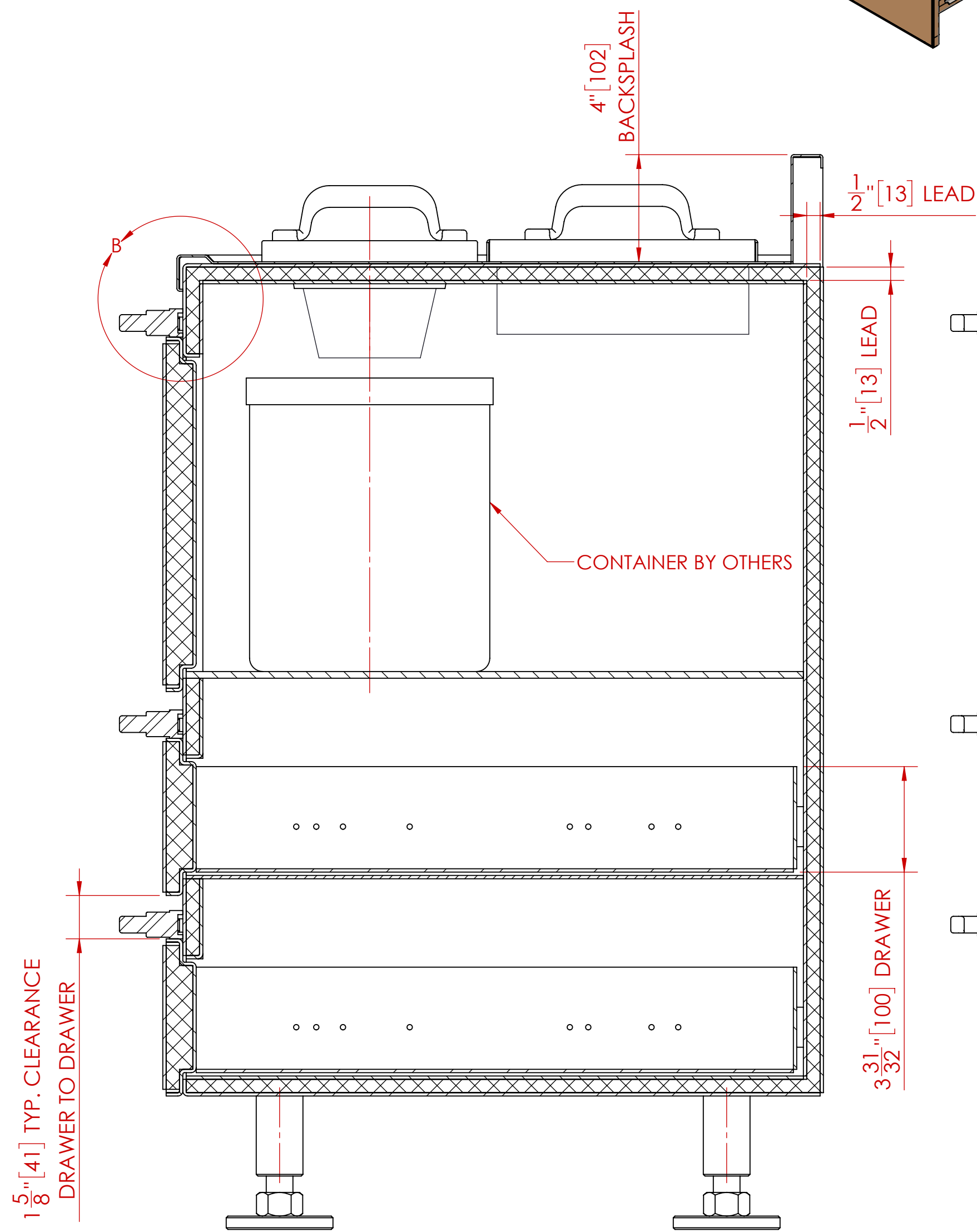
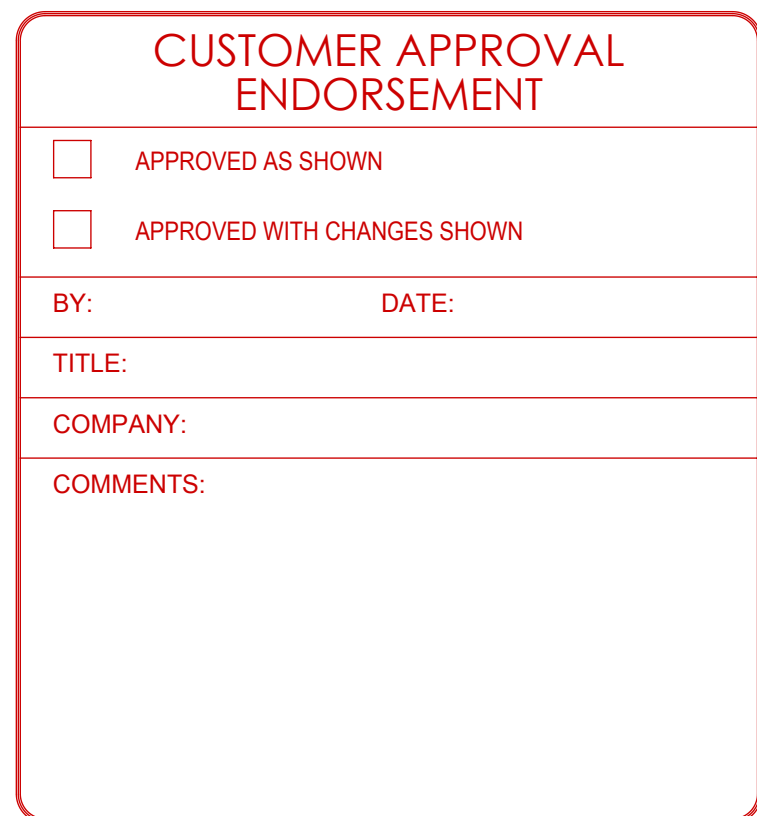
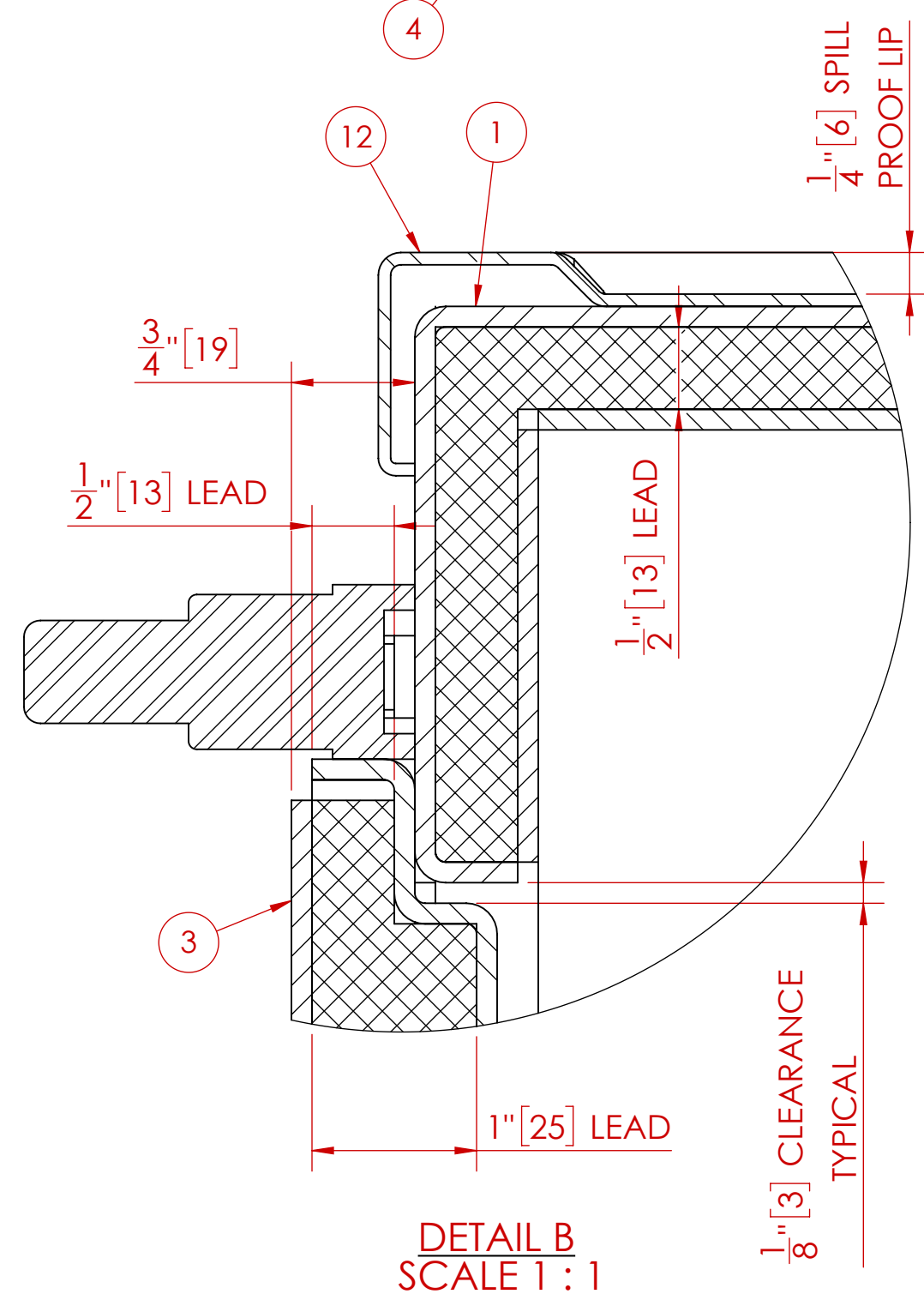
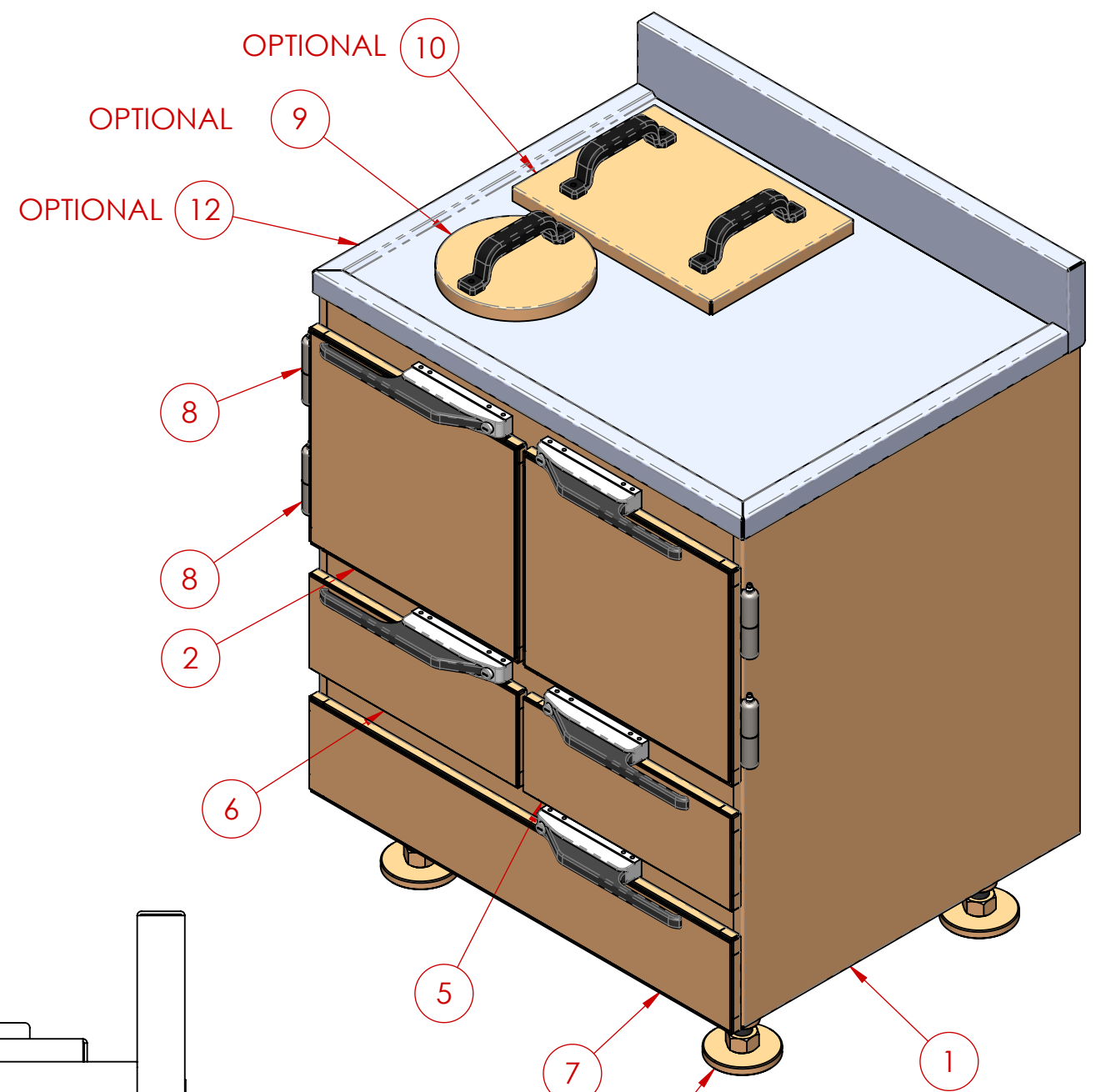
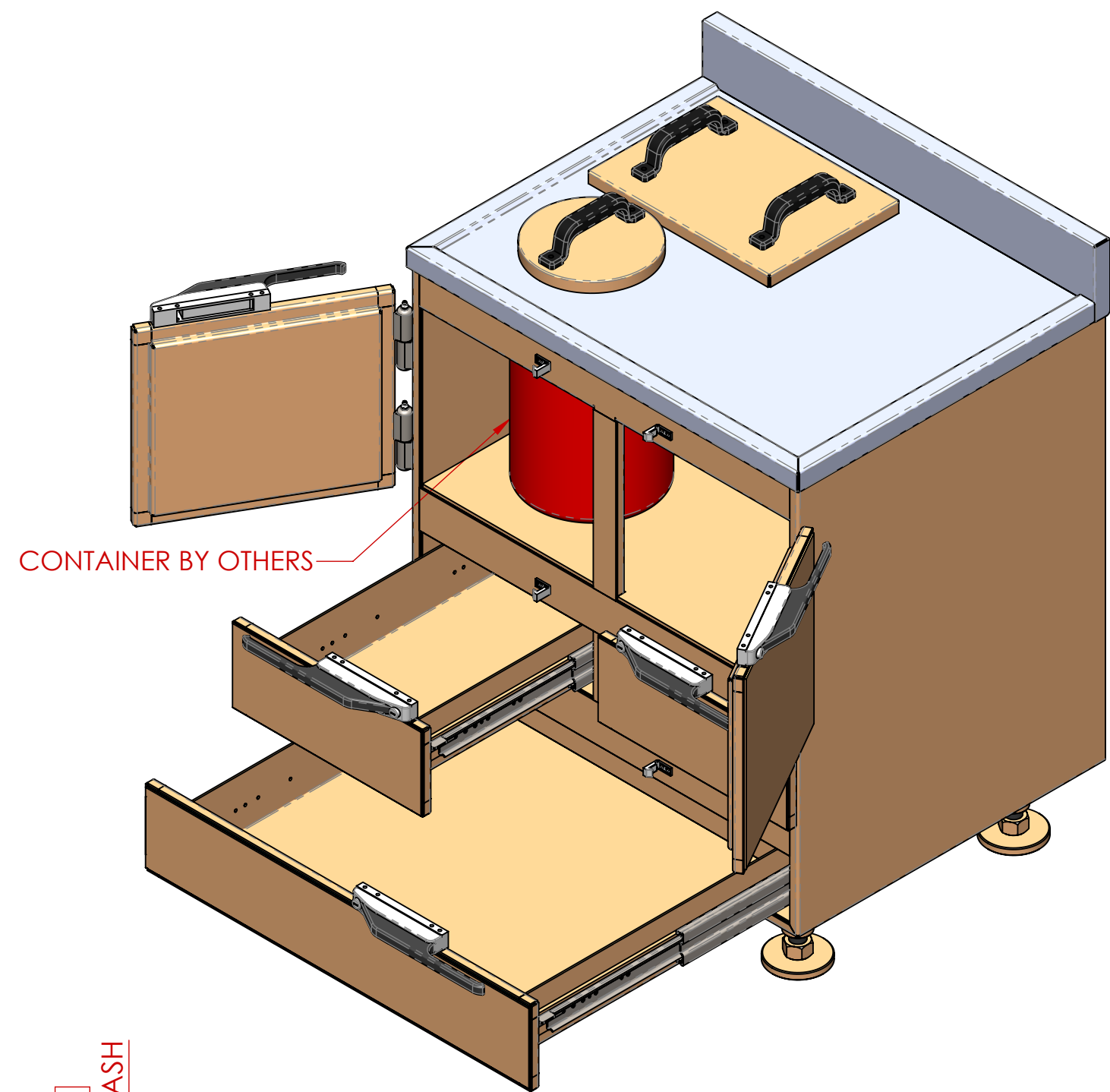



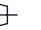
ITEM NO.	QTY	PART NUMBER	DESCRIPTION
1	1	MS-UDC-0.5-01-00	BODY
2	1	MS-UDC-0.5-02-00	DOOR - LEFT HAND
3	1	MS-UDC-0.5-02-00	DOOR - RIGHT HAND
4	4	MS-DC-0.5-08-00	LEG
5	1	MS-UDC-0.5-03-00	DRAWER - RIGHT HAND
6	1	MS-UDC-0.5-03-00	DRAWER - LEFT HAND
7	1	MS-UDC-0.5-03-06	DRAWER
8	4	-----	4" HINGE C/W GREASE NIPPLE
9	1	-----	OPTIONAL SHARPS HOLE C/W LEAD FILLED COVER
10	1	-----	OPTIONAL SHARPS WELL C/W LEAD FILLED COVER
12	1	MS-10-01	OPTIONAL CABINET TOP




TOTAL LEAD WEIGHT	TOTAL CABINET WEIGHT (INCLUDING LEAD)
1,060 LBS. (482 kg)	1,665 LBS. (757 kg)

C	HANDLE/LATCH STYLE CHANGED (WAS CURVED)	7/16/2019	M.S.D.
B	ADDED WEIGHTS TABLE	22/27/2013	M.S.D.
A	RELEASED FOR CUSTOMER REVIEW & APPROVAL	1/17/2013	M.S.D.
REV.	DESCRIPTION	DATE	APPROVED
REVISIONS			

UNLESS OTHERWISE SPECIFIED	
DO NOT SCALE DRAWING DIMENSIONS SHOWN IN PARENTHESES ARE FOR REFERENCE ONLY (1:500) DIMENSIONS ARE IN INCHES (mm) TOLERANCES APPLY AS SHOWN BELOW $\pm = \pm 0.005$ $XX = \pm 0.010$ $XXX = \pm 0.005$ $FRACTIONS = \pm 1/16$ $ANGLES = 0.5^\circ$	ALL MACHINED SURFACES TO BE $\sqrt{10}$ ALL WELD SPECIFICATIONS PER WELD SHOP
PROPRIETARY NO PART OF THIS DOCUMENT MAY BE REPRODUCED, STORED IN A RETRIEVAL SYSTEM, OR TRANSMITTED IN ANY FORM, WITH- OUT THE WRITTEN PERMISSION OF Marshfield - Mars Metal Company DIVISION OF Marswell Metal Industries Ltd.	

 	
<p align="center">SolidWorks MAINTAINED DATA CHANGES SHALL BE INCORPORATED ELECTRONICALLY BY THE DESIGN ACTIVITY</p>	
MODEL NUMBER:	
DRAWING BY: M.S.D.	
DATE: 1/16/2013	
CHECKED BY:	
DATE:	
APPROVED:	
DATE:	

		Custom Radiation Protection, Shielding and Storage	
TITLE UNIT DOSE CABINET ASSEMBLY			
CUSTOMER/DEALER			
SIZE D	DRAWING NO. MS-UDC-0.5-30.5-24-36.5		REVISION C
SCALE 1:4	WEIGHT	SHEET 1 OF 1	

1. ALL UNITS ARE INCHES [mm] UNLESS OTHERWISE SPECIFIED
2. ITEM 9 (CABINET TOP) IS OPTIONAL
3. ITEM 10 (SHARPS HOLE & COVER) IS OPTIONAL
4. ITEM 11 (SHARPS WELL & COVER) IS OPTIONAL