

**CUSTOMER APPROVAL ENDORSEMENT**

APPROVED AS SHOWN  
 APPROVED WITH CHANGES SHOWN

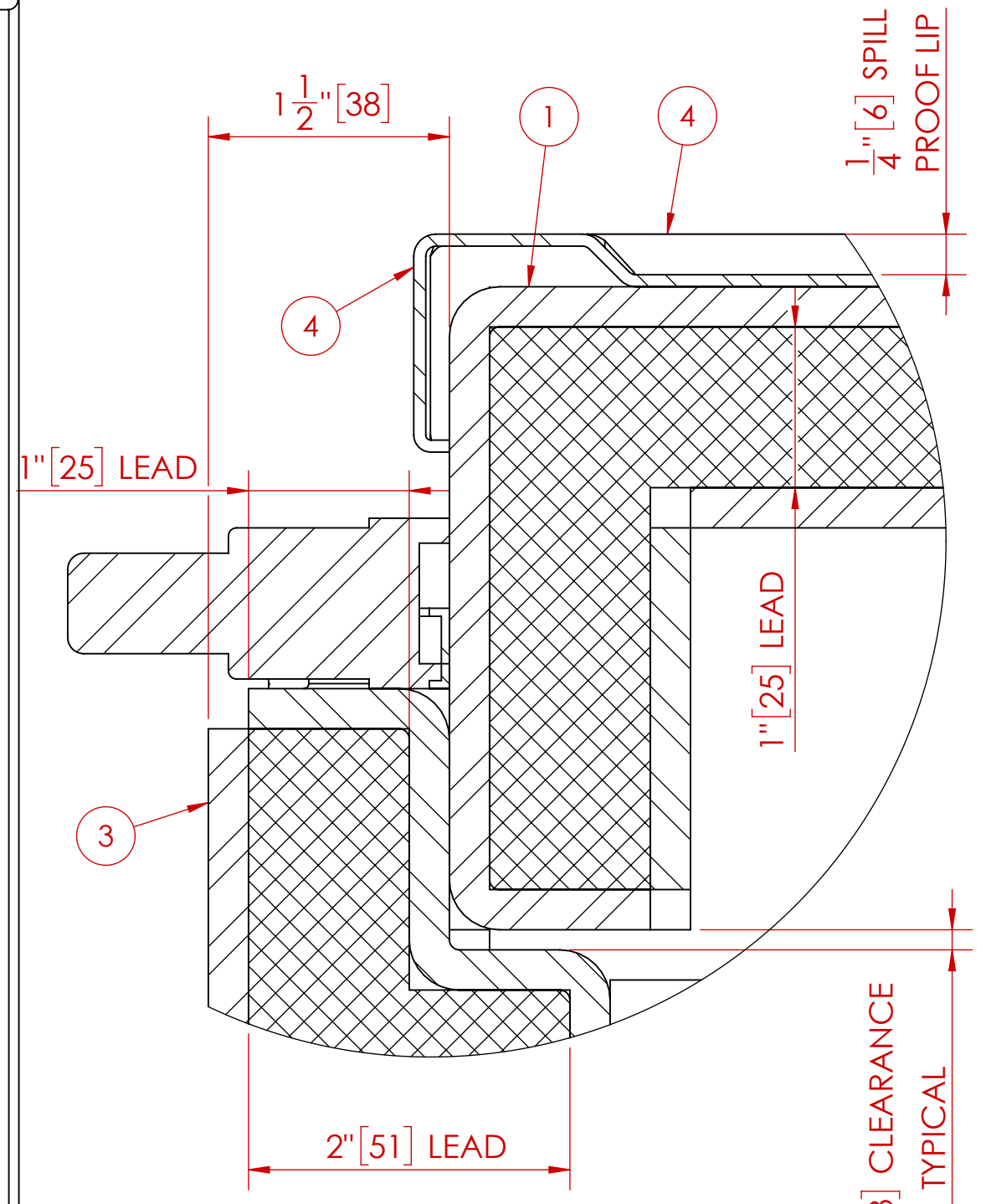
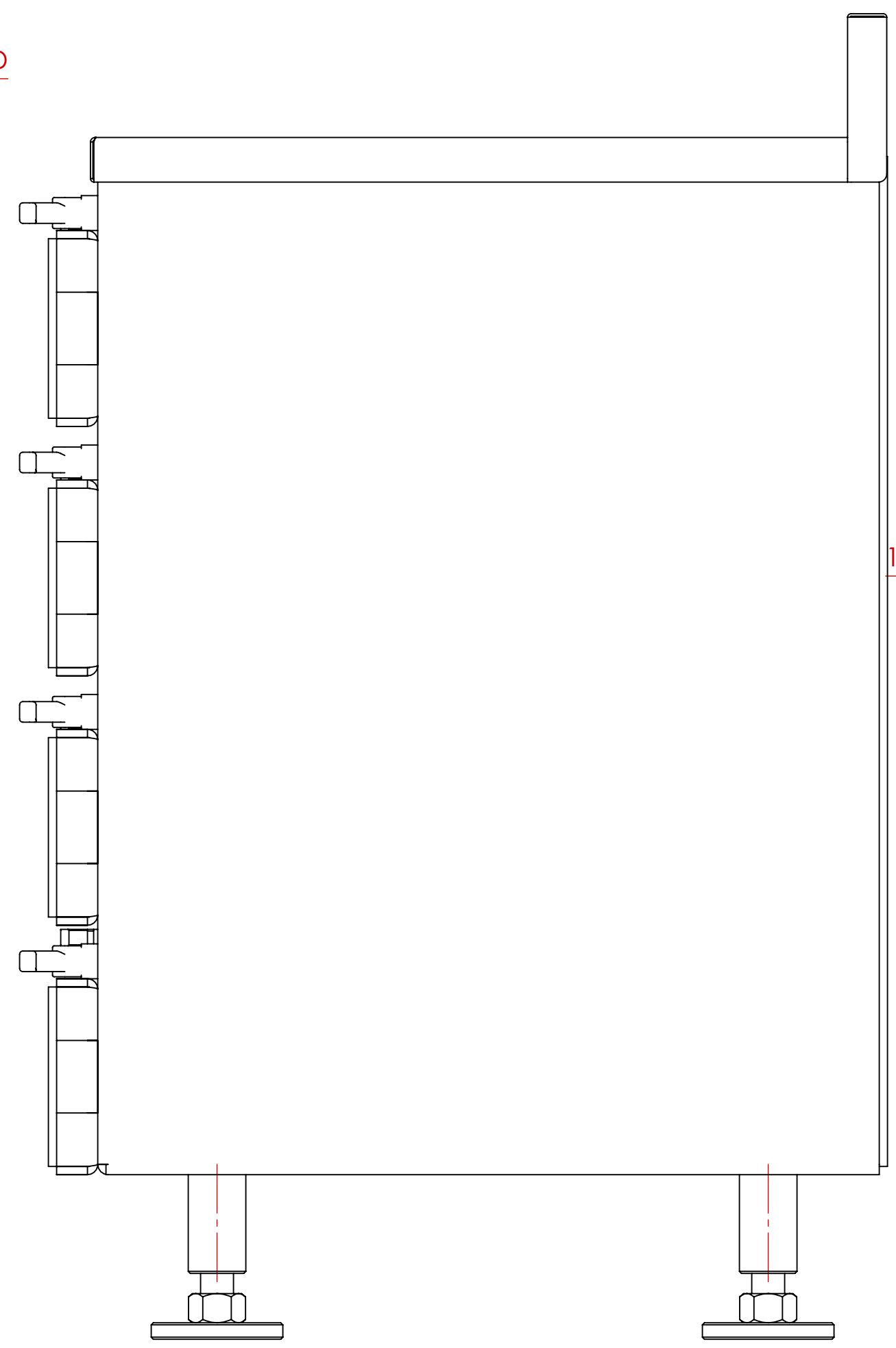
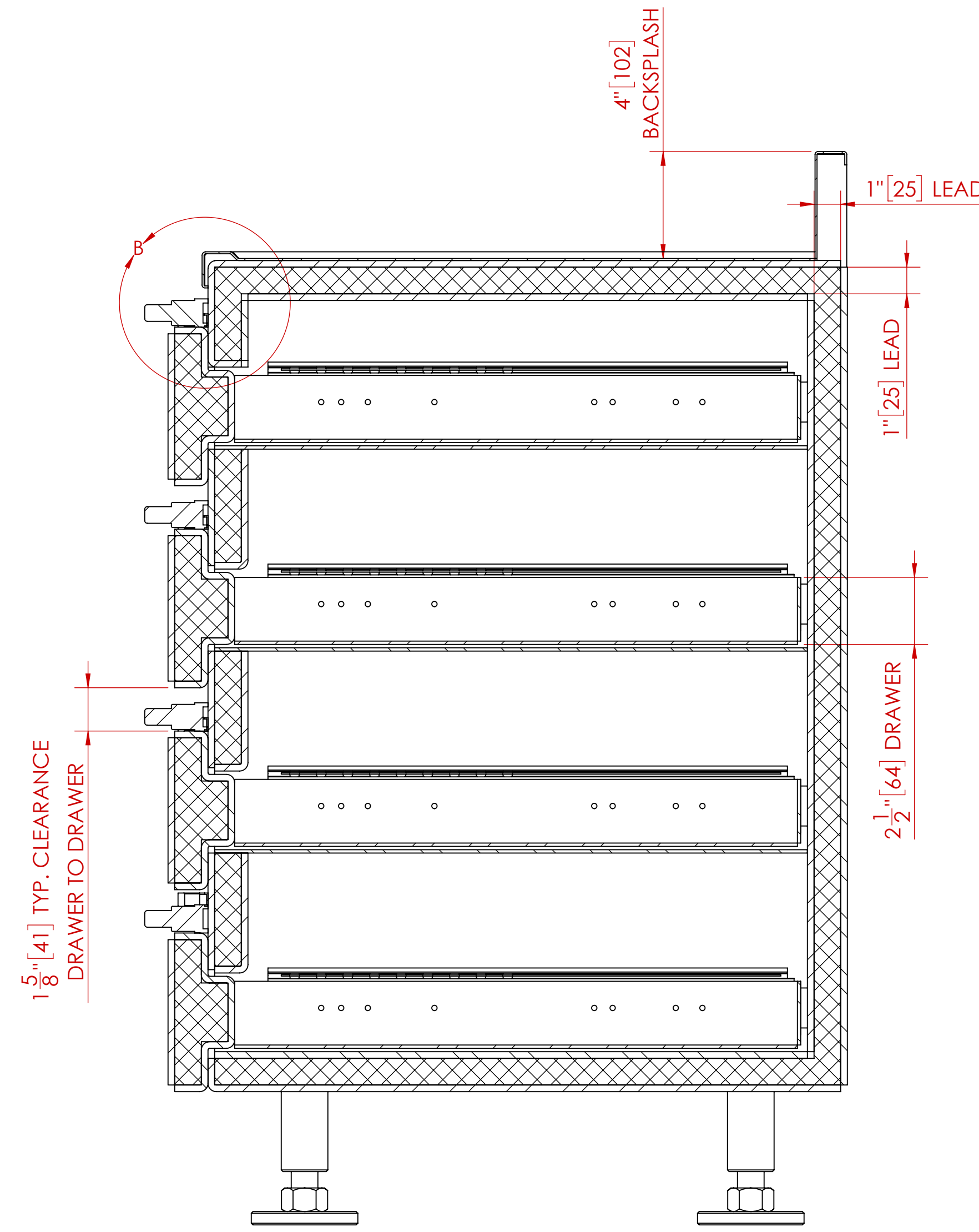
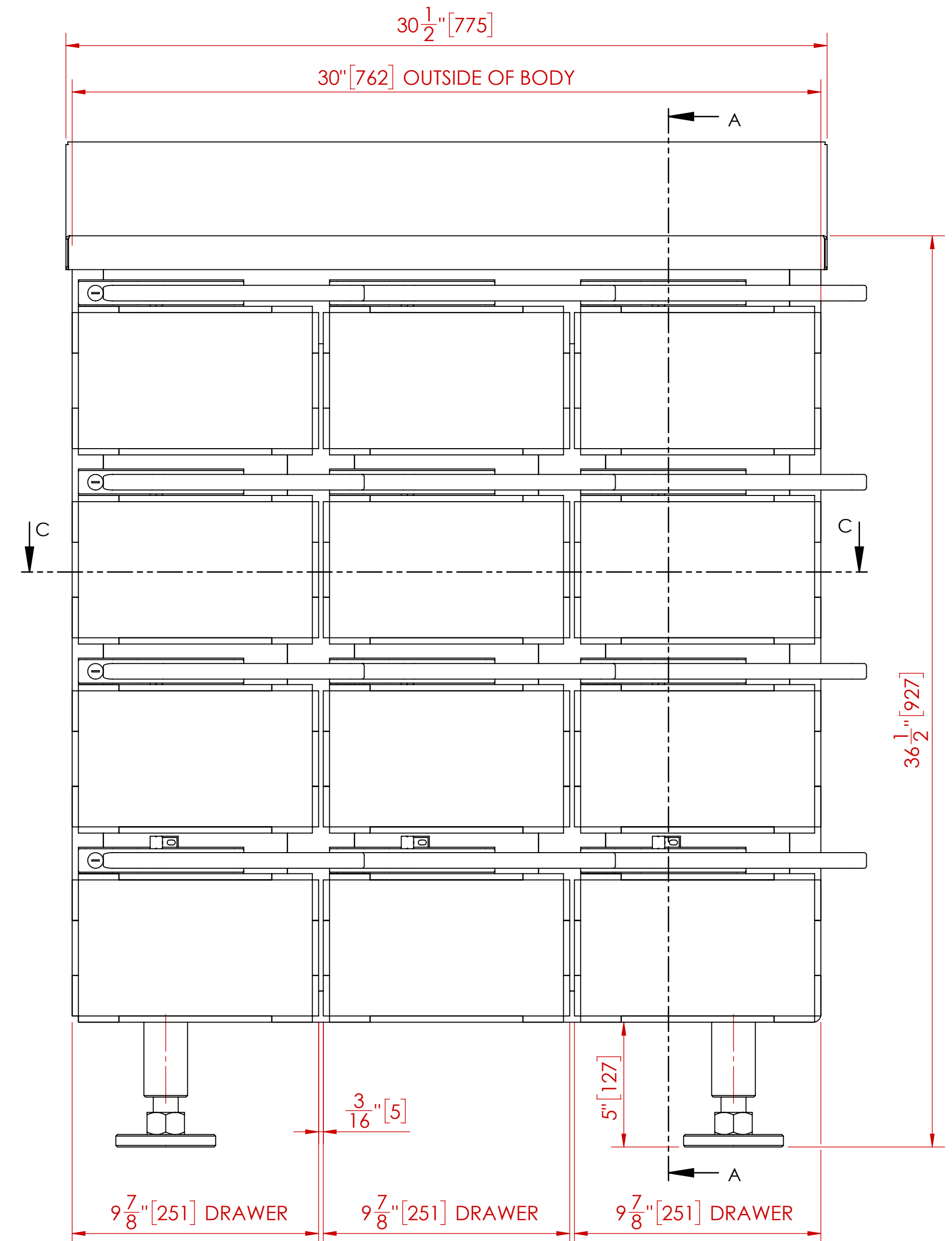
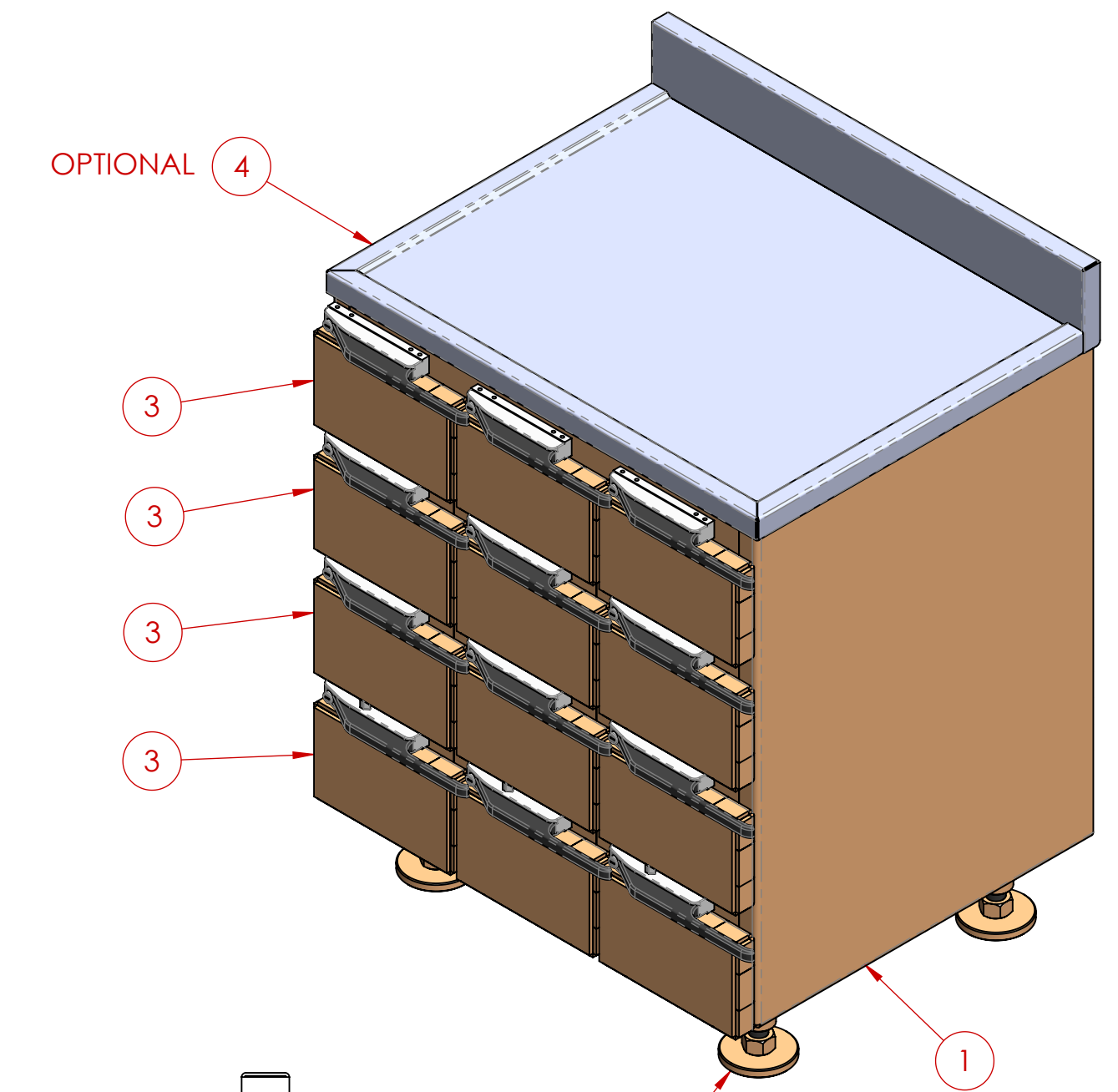
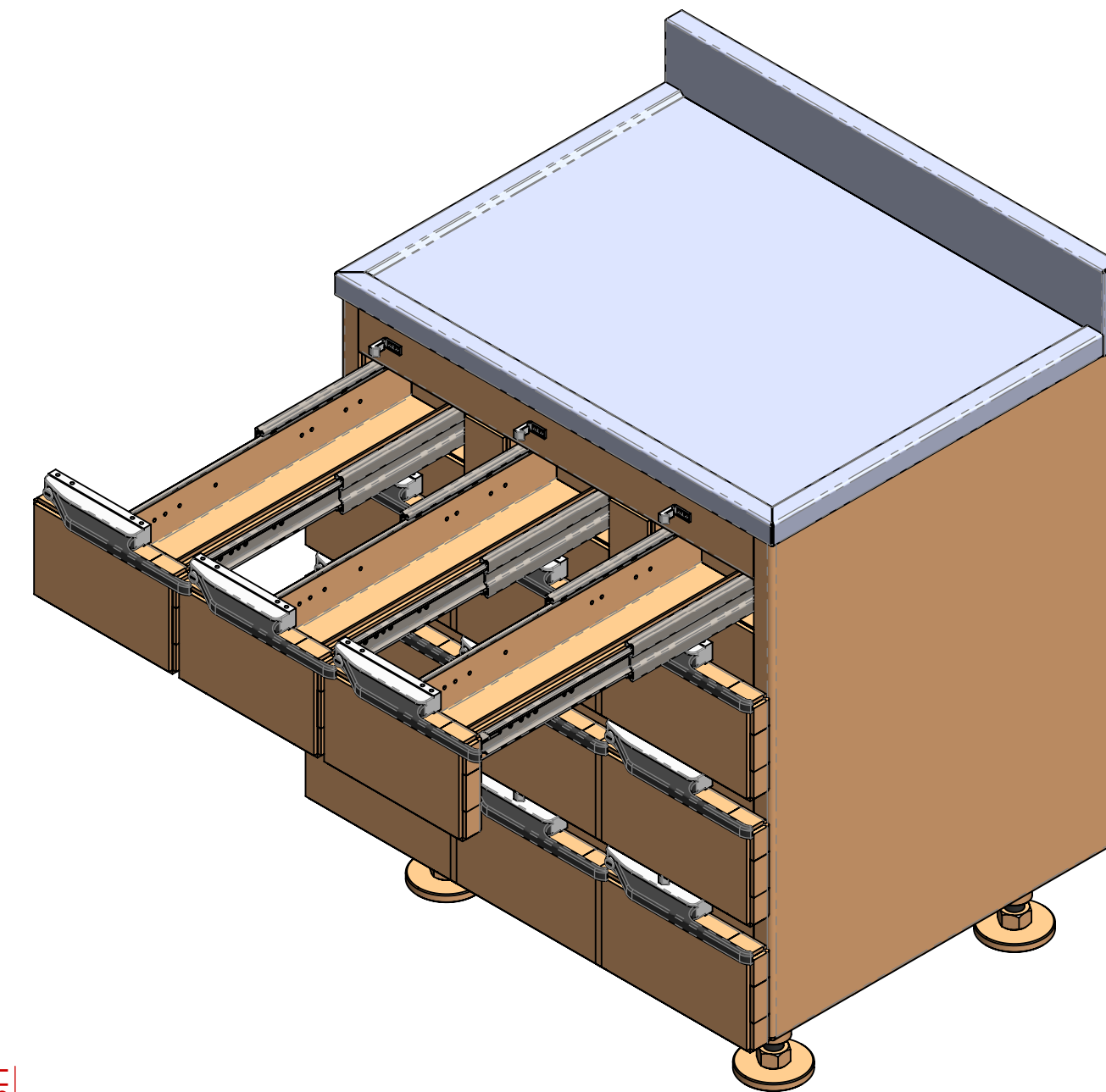
BY: \_\_\_\_\_ DATE: \_\_\_\_\_

TITLE: \_\_\_\_\_

COMPANY: \_\_\_\_\_

COMMENTS: \_\_\_\_\_

ITEM NO.	QTY	PART NUMBER	DESCRIPTION
1	1	MS-RSC-1.0-01-00	BODY
2	4	MS-DC-0.5-08-00	LEG
3	12	MS-RSC-1.0-03-00	DRAWER
4	1	MS-10-01	OPTIONAL CABINET TOP



DETAIL B  
SCALE 1 : 1

- NOTES:**
- ALL UNITS ARE INCHES [mm] UNLESS OTHERWISE SPECIFIED
  - ITEM 4 (CABINET TOP) IS OPTIONAL

<b>TOTAL LEAD WEIGHT</b>	<b>TOTAL CABINET WEIGHT (INCLUDING LEAD)</b>
1,980 LBS. (900 kg)	3,325 LBS. (1,511 kg)

REV.	DESCRIPTION	DATE	APPROVED
B	HANDLE/LATCH STYLE CHANGED (WAS CURVED)	7/16/2019	M.S.D.
A	ADDED WEIGHTS TABLE	2/27/2013	M.S.D.

UNLESS OTHERWISE SPECIFIED

DO NOT SCALE DRAWING DIMENSIONS SHOWN PREFERABLE FOR REFERENCE ONLY (XXI) DIMENSIONS ARE IN INCHES [mm] TOLERANCES APPLY AS SHOWN BELOW  
 X = ± 0.005  
 XX = ± 0.010  
 XXX = ± 0.020  
 ANGLES ± 0.005°

ALL MACHINED SURFACES TO BE  $\sqrt{10}$   
 ALL WELD SPECIFICATIONS PER WELD SHOP

PROPRIETARY  
 NO PART OF THIS DOCUMENT MAY BE REPRODUCED, STORED IN A RETRIEVAL SYSTEM, OR TRANSMITTED IN ANY FORM, WITHOUT THE WRITTEN PERMISSION OF MarShield - MDR Metal Company DIVISION OF Marshwell Metal Industries Ltd.

SolidWorks MAINTAINED DATA CHANGES SHALL BE INCORPORATED ELECTRONICALLY BY THE DESIGN ACTIVITY

**MarShield** Custom Radiation Protection, Shielding and Storage

RADIOISOTOPE STORAGE CABINET ASSEMBLY

CUSTOMER/DEALER: \_\_\_\_\_

DRAWN BY: M.S.D. DATE: 2/21/2013  
 CHECKED BY: \_\_\_\_\_ DATE: \_\_\_\_\_  
 APPROVED BY: \_\_\_\_\_ DATE: \_\_\_\_\_

SCALE: 1:4 WEIGHT: 1 SHEET 1 OF 1