

CUSTOMER APPROVAL ENDORSEMENT

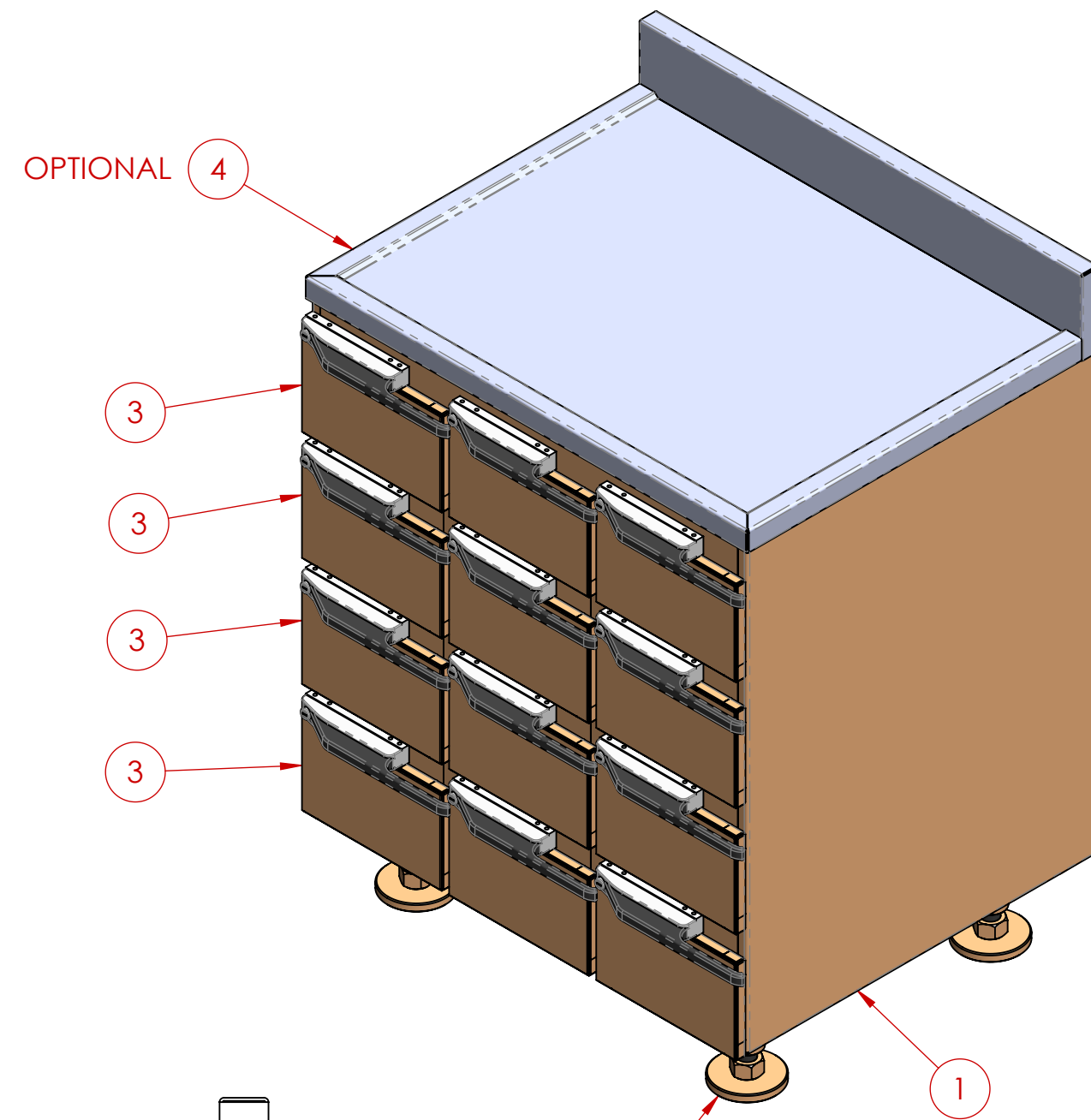
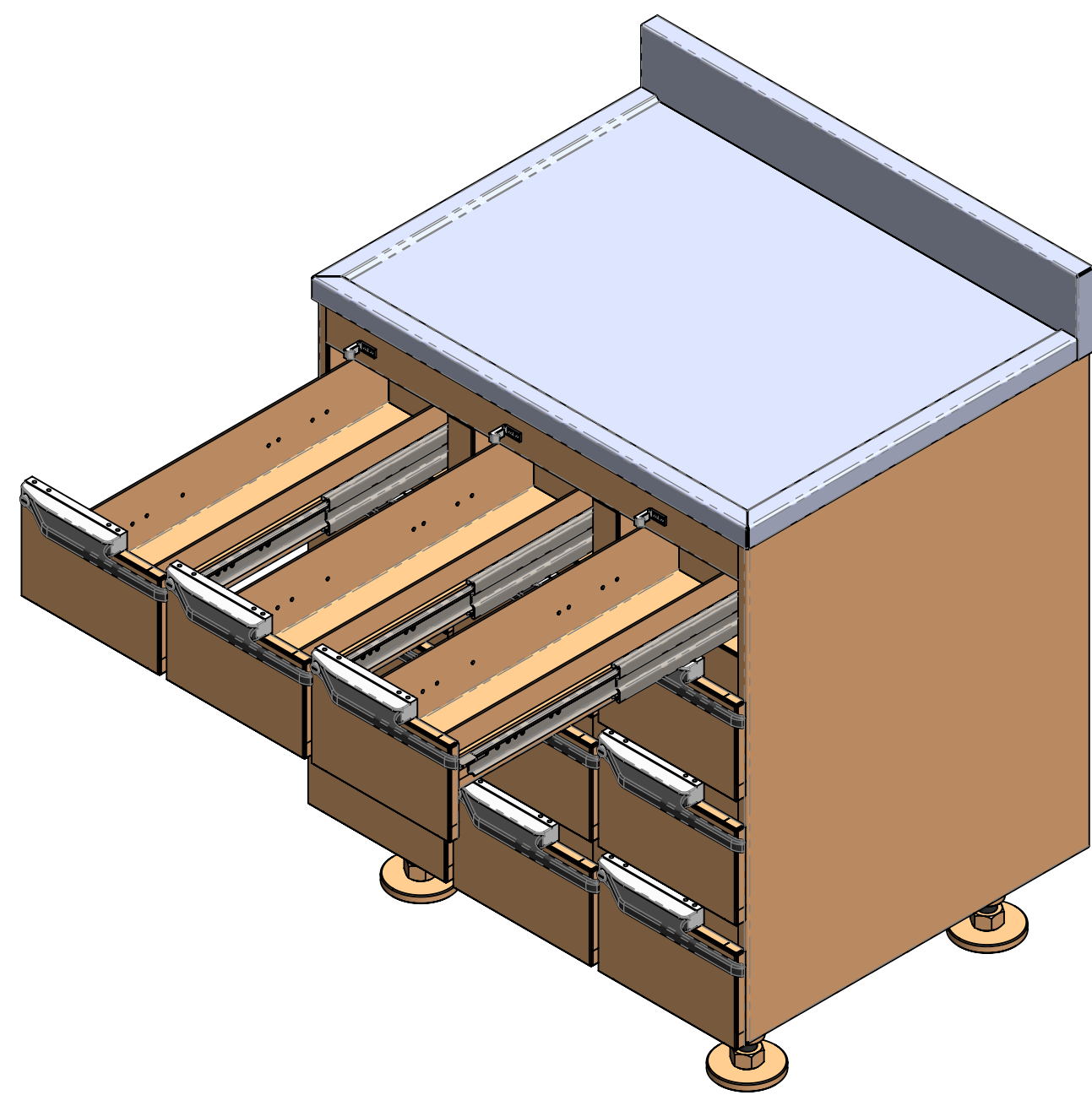
APPROVED AS SHOWN
 APPROVED WITH CHANGES SHOWN

BY: _____ DATE: _____

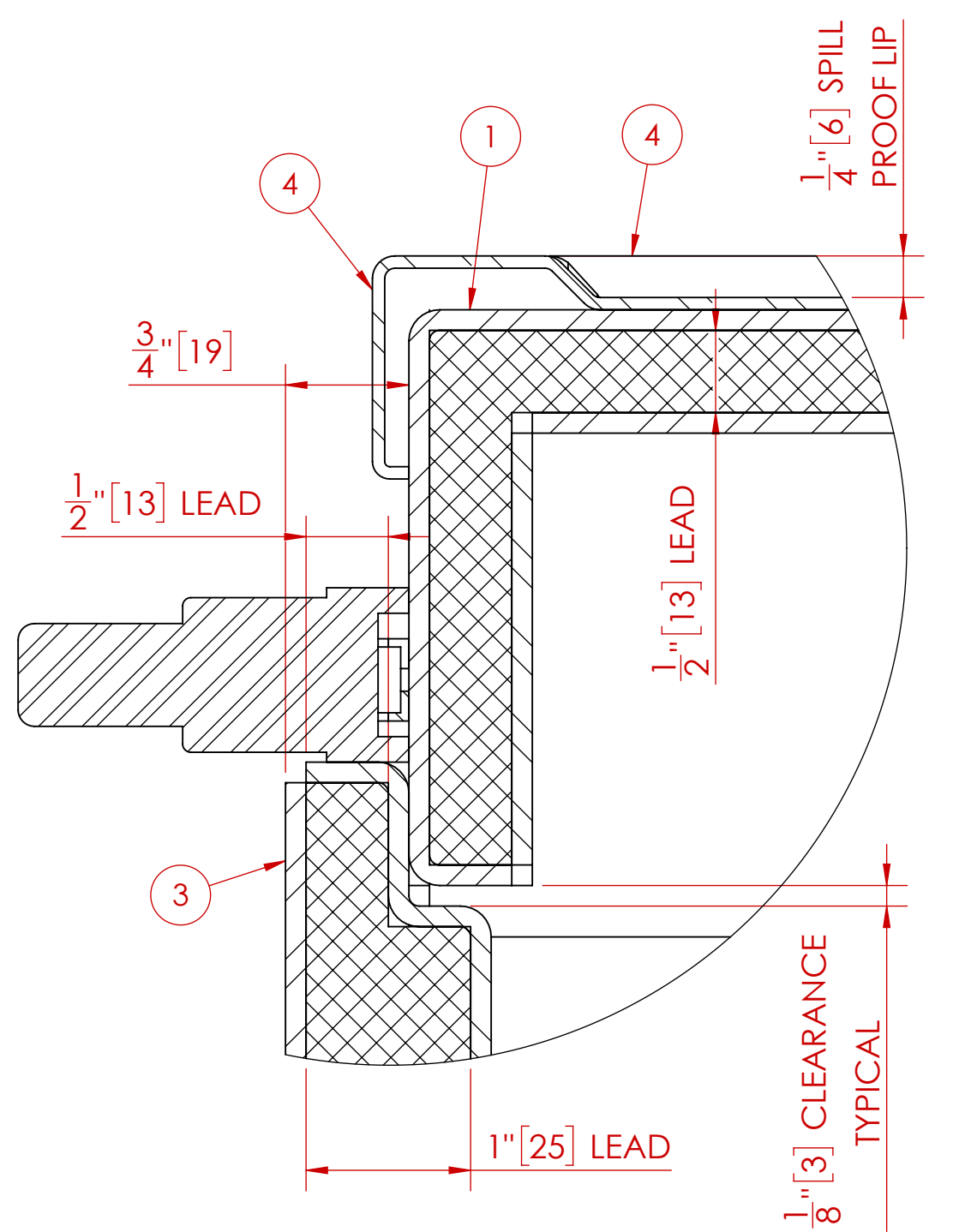
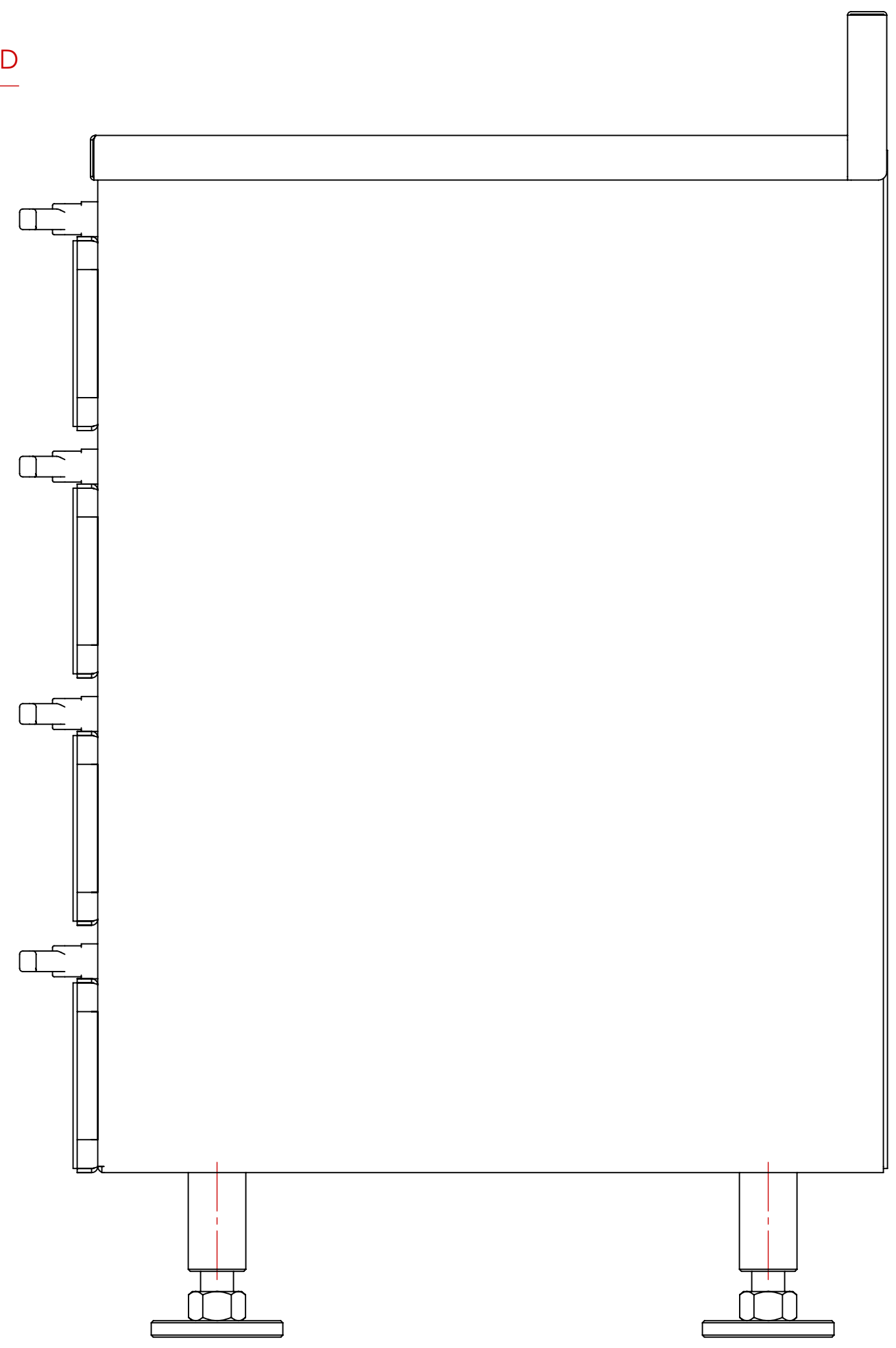
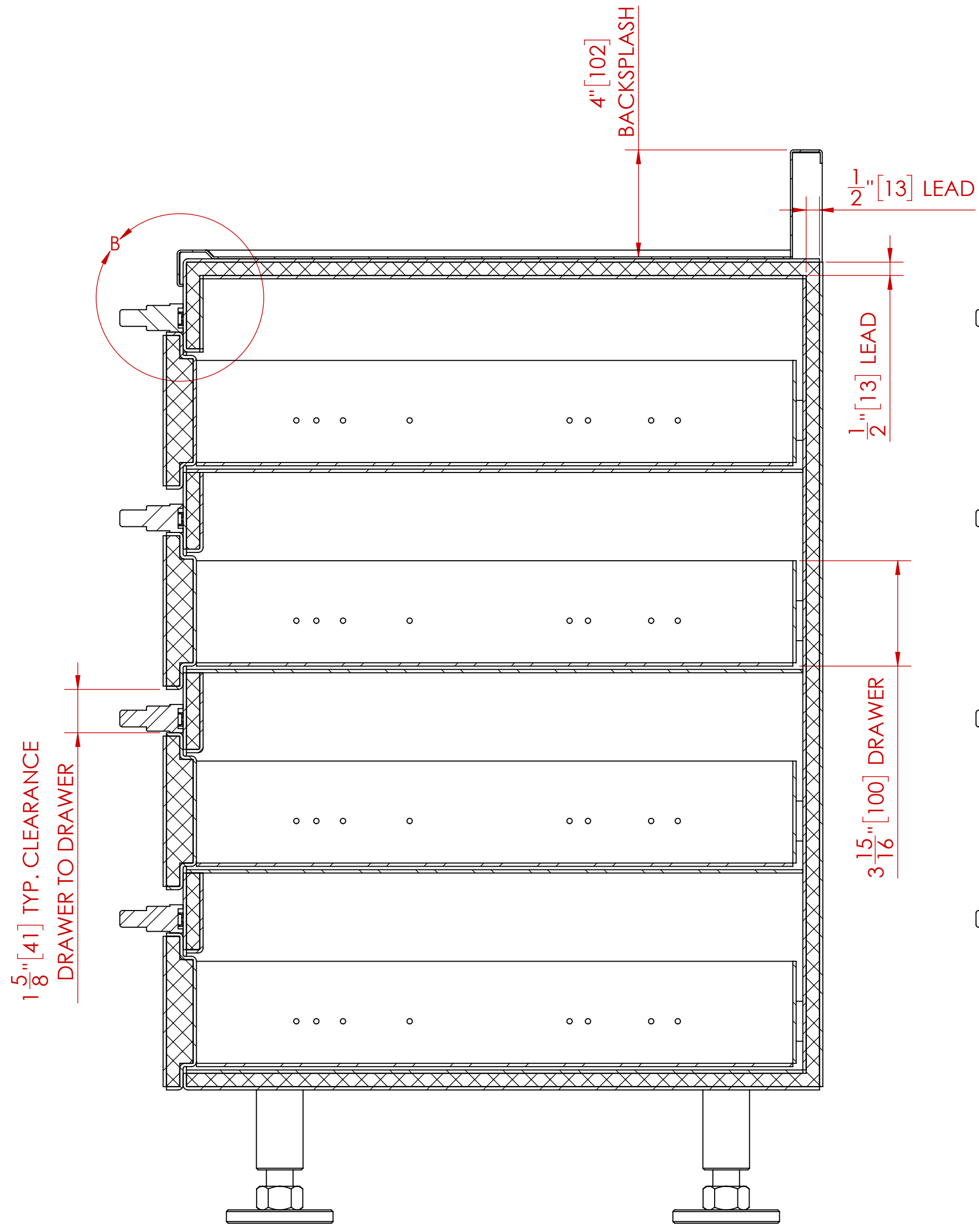
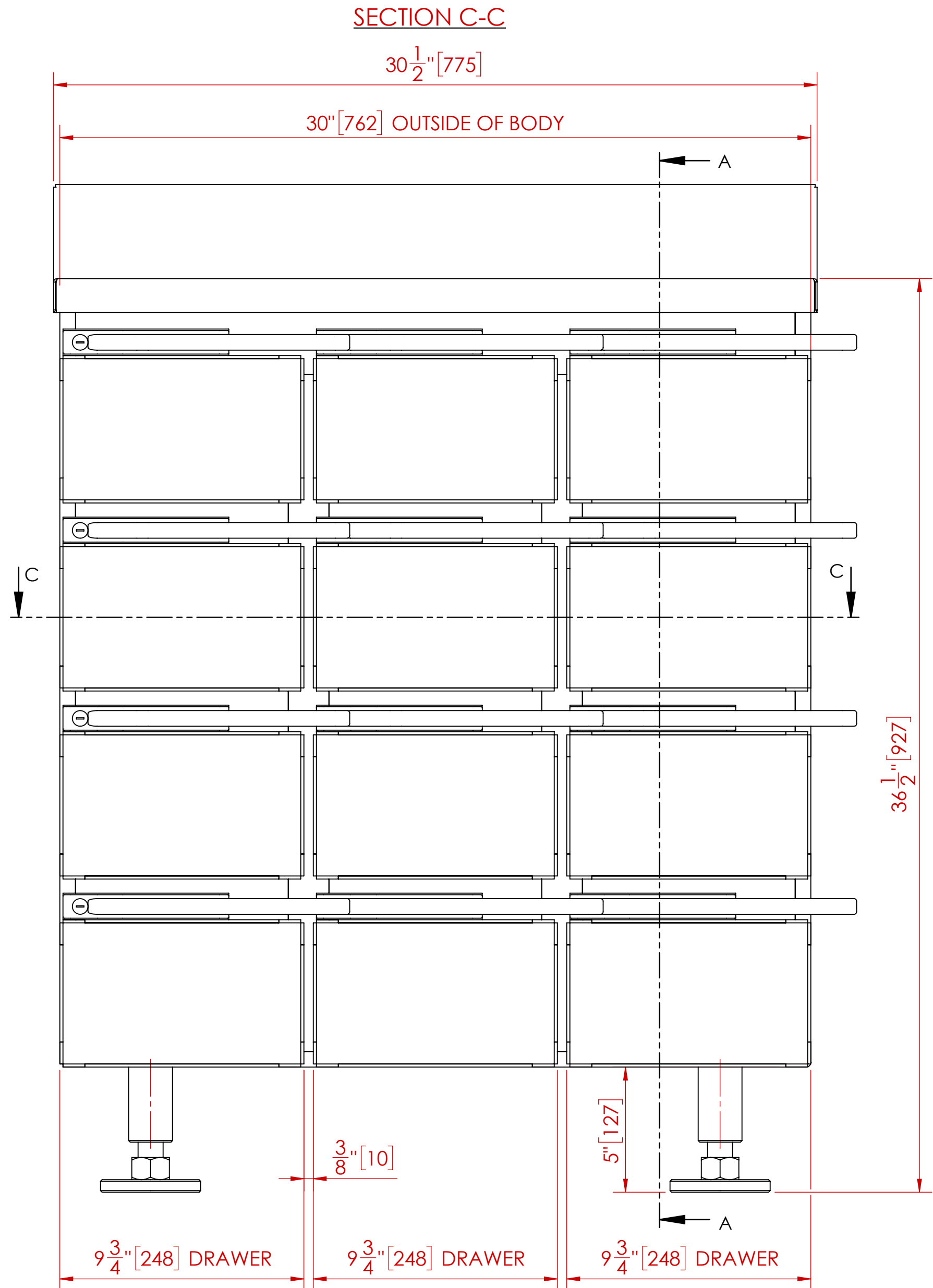
TITLE: _____

COMPANY: _____

COMMENTS: _____



ITEM NO.	QTY	PART NUMBER	DESCRIPTION
1	1	MS-RSC-0.5-01-00	BODY
2	4	MS-DC-0.5-08-00	LEG
3	12	MS-DSC-0.5-03-00	DRAWER
4	1	MS-10-01	OPTIONAL CABINET TOP



DETAIL B
SCALE 1:1

- NOTES:**
- ALL UNITS ARE INCHES [mm] UNLESS OTHERWISE SPECIFIED
 - ITEM 4 (CABINET TOP) IS OPTIONAL

TOTAL LEAD WEIGHT	TOTAL CABINET WEIGHT (INCLUDING LEAD)
1,035 LBS. (470 kg)	2,145 LBS. (975 kg)

REV.	DESCRIPTION	DATE	APPROVED
C	HANDLE/LATCH STYLE CHANGE (WAS CURVED)	7/16/2019	M.S.D.
B	ADDED WEIGHTS TABLE	2/27/2013	M.S.D.
A	RELEASED FOR CUSTOMER REVIEW & APPROVAL	1/17/2013	M.S.D.

UNLESS OTHERWISE SPECIFIED

DO NOT SCALE DRAWING DIMENSIONS SHOWN PREFERABLE FOR REFERENCE ONLY (XXI) DIMENSIONS ARE IN INCHES (mm) TOLERANCES APPLY AS SHOWN BELOW
 X = ± 0.005
 Y = ± 0.010
 Z = ± 0.005
 ANGLES ± 0.007°

ALL MACHINED SURFACES TO BE $\sqrt{10}$
 ALL WELD SPECIFICATIONS PER WELD SHOP

PROPRIETARY
 NO PART OF THIS DOCUMENT MAY BE REPRODUCED, STORED IN A RETRIEVAL SYSTEM, OR TRANSMITTED IN ANY FORM, WITHOUT THE WRITTEN PERMISSION OF MarShield - Mors Metall Company DIVISION OF Marshall Metal Industries Ltd.

SolidWorks MAINTAINED DATA CHANGES SHALL BE INCORPORATED ELECTRONICALLY BY THE DESIGN ACTIVITY
 MODEL NUMBER: _____

MarShield Custom Radiation Protection, Shielding and Storage

RADIOISOTOPE STORAGE CABINET ASSEMBLY

CUSTOMER/DEALER: _____

DRAWN BY: M.S.D. DATE: 1/16/2013
 CHECKED BY: _____ DATE: _____
 APPROVED BY: _____ DATE: _____

SCALE: 1:4 WEIGHT: 1 SHEET 1 OF 1