

CUSTOMER APPROVAL ENDORSEMENT

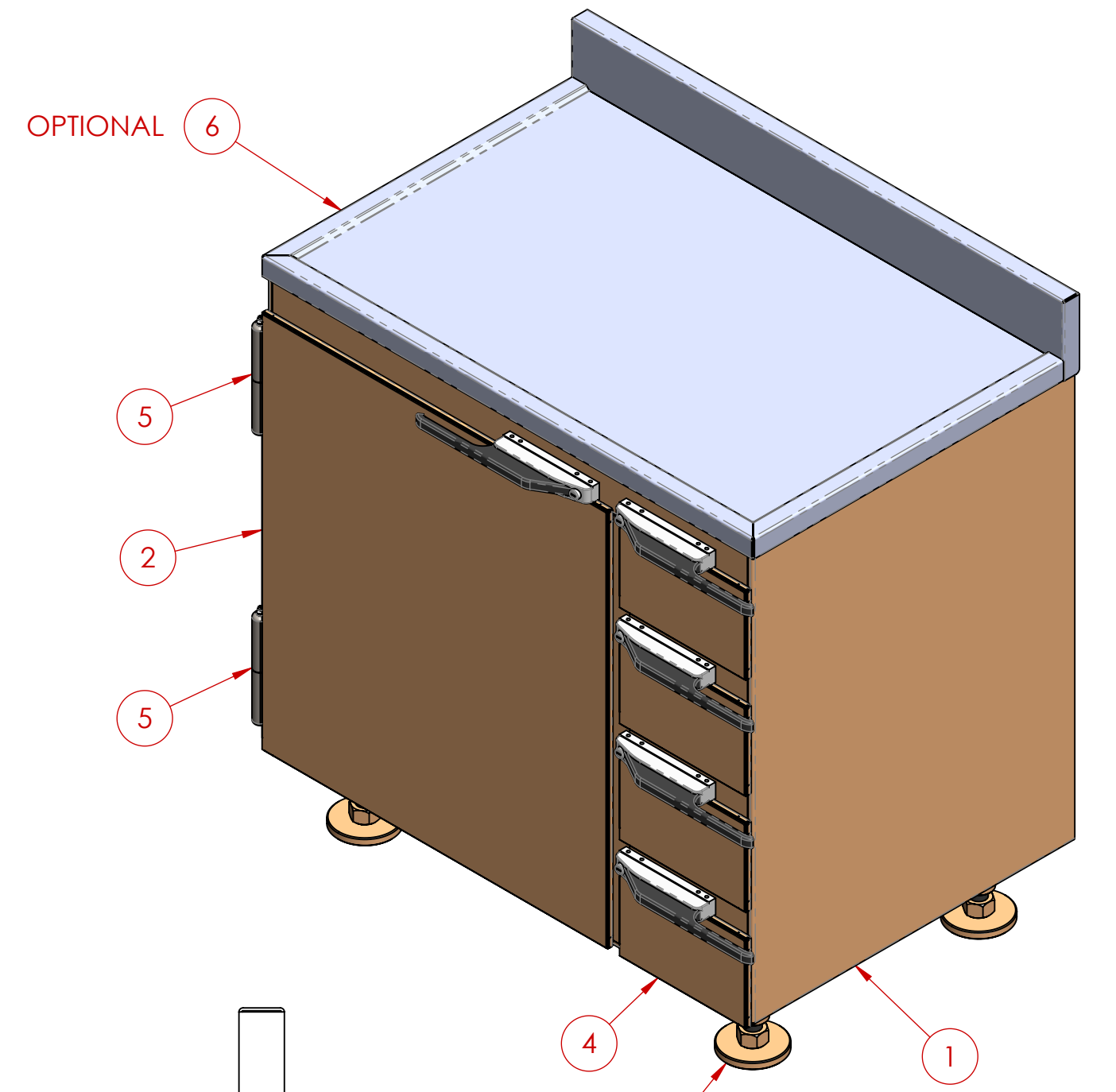
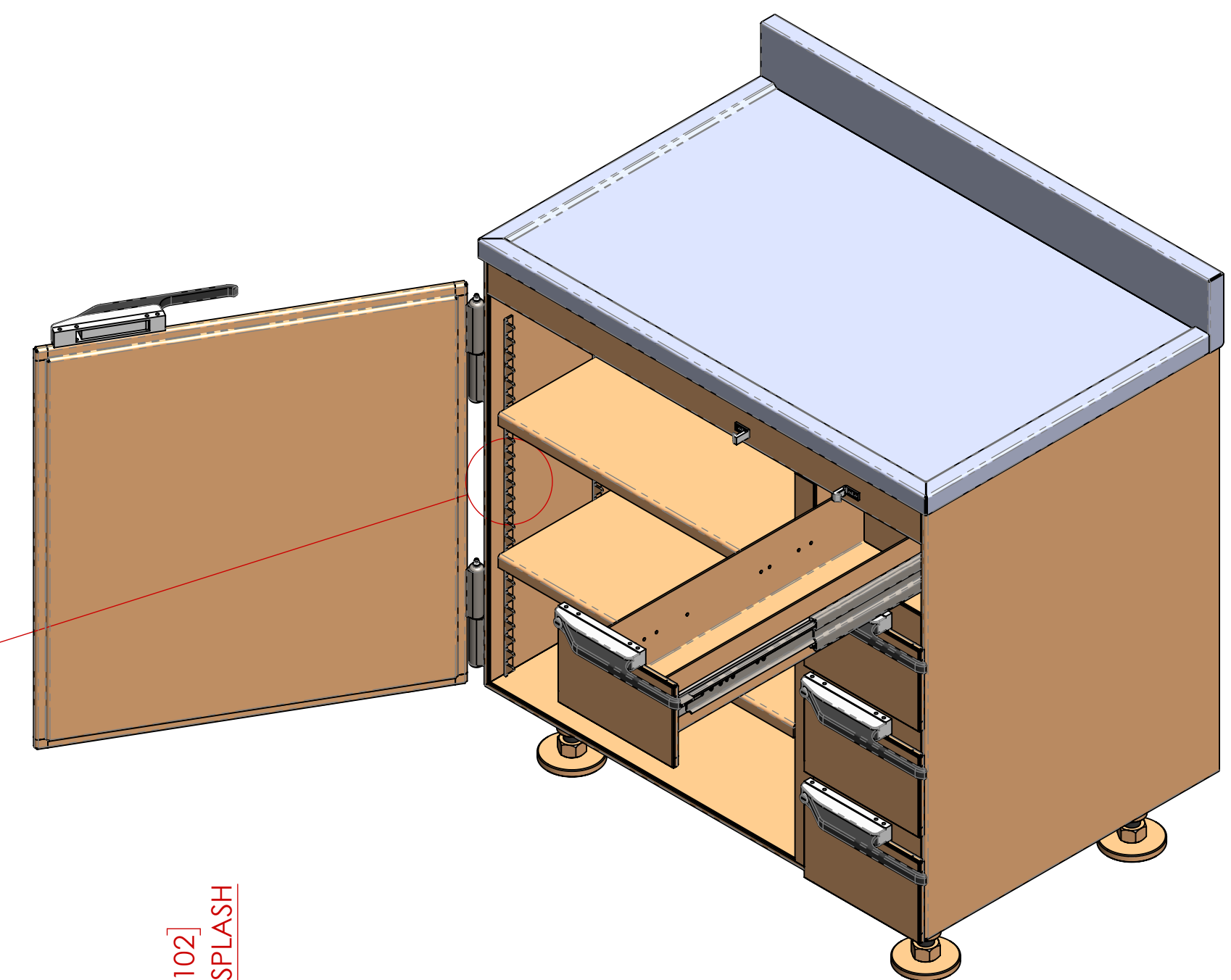
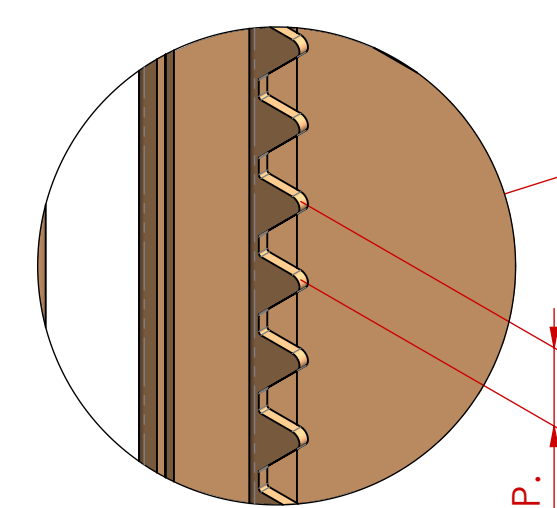
APPROVED AS SHOWN
 APPROVED WITH CHANGES SHOWN

BY: _____ DATE: _____

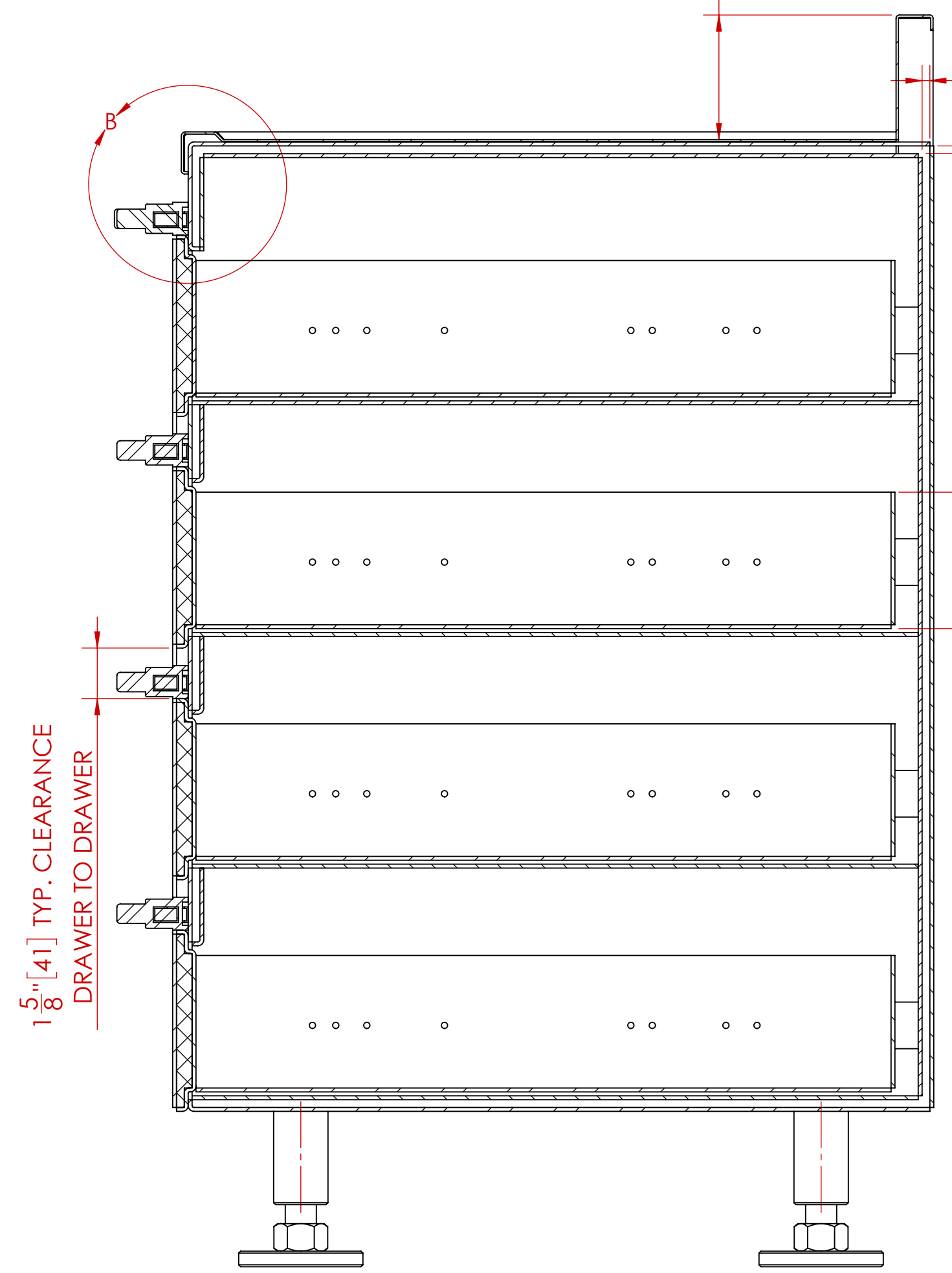
TITLE: _____

COMPANY: _____

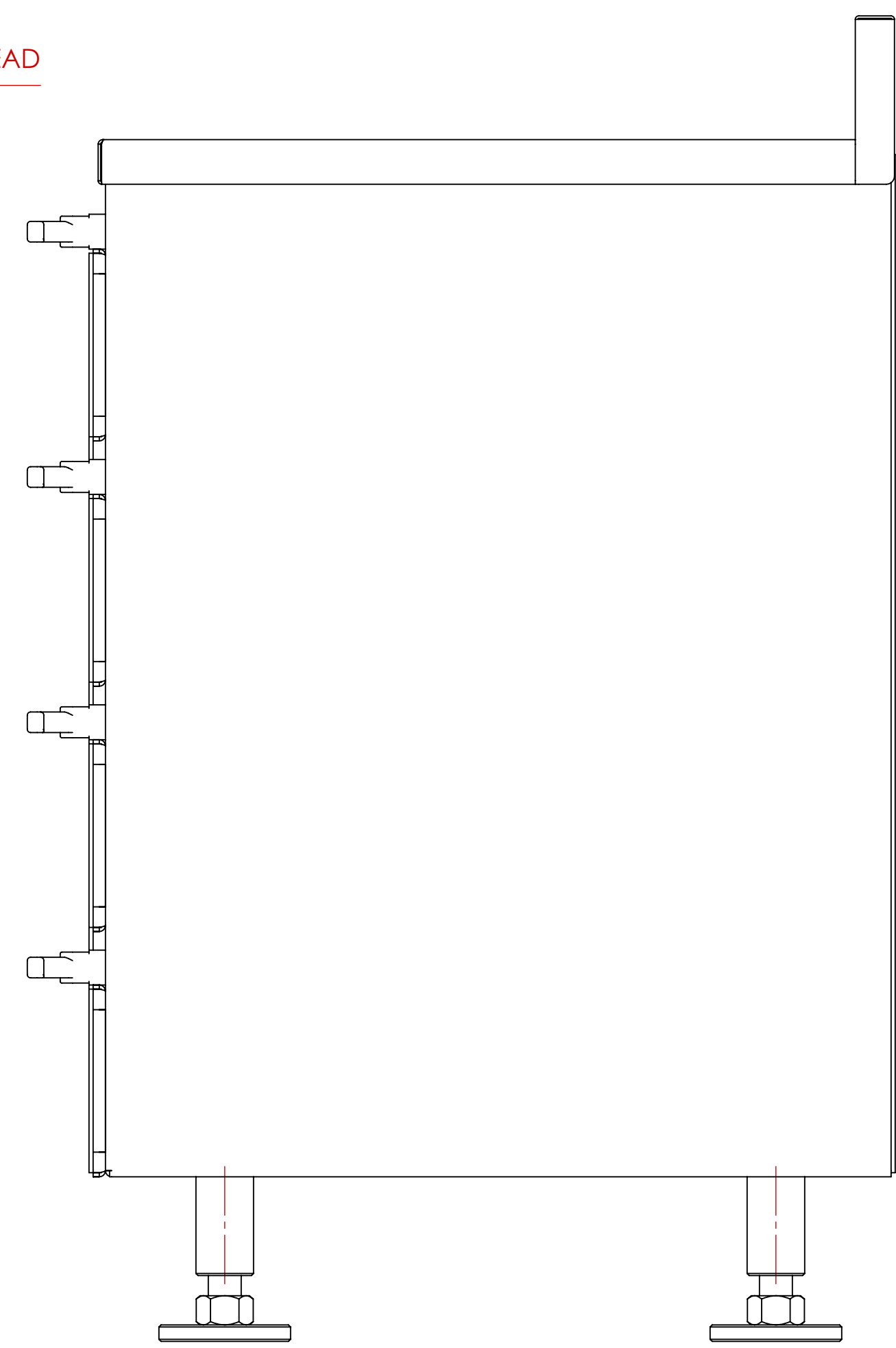
COMMENTS: _____



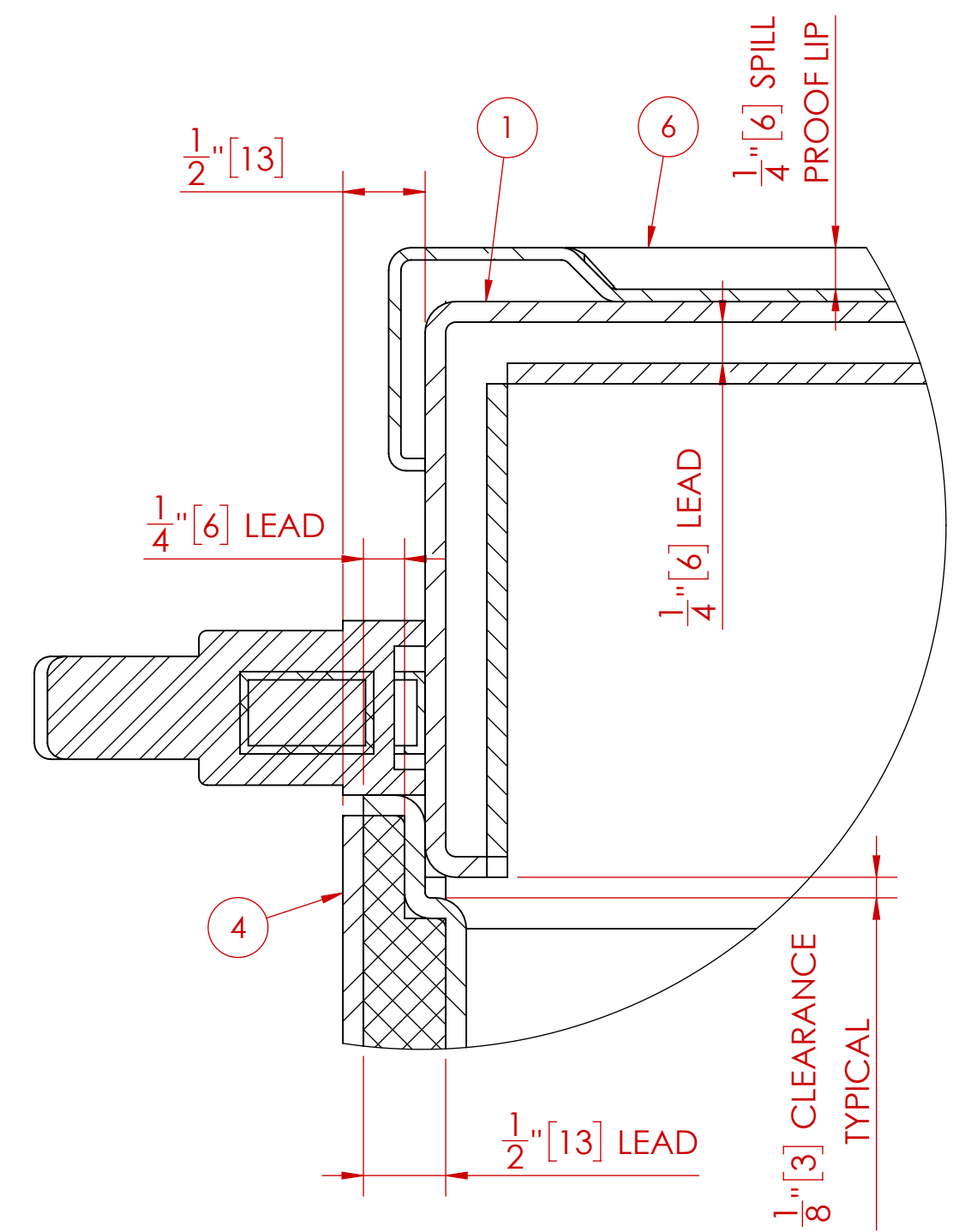
ITEM NO.	QTY	PART NUMBER	DESCRIPTION
1	1	MS-DSC-0.25-01-00	BODY
2	1	MS-DSC-0.25-02-00	DOOR
3	4	MS-DC-0.5-08-00	LEG
4	4	MS-DSC-0.25-03-00	DRAWER
5	2	-----	7" HINGE C/W GREASE NIPPLE
6	1	MS-10-02	OPTIONAL CABINET TOP
7	2	MS-DSC-0.25-04-00 <As Welded>	ADJUSTABLE SHELF



SECTION A-A



SECTION C-C



DETAIL B
SCALE 1:1

NOTES:
 1. ALL UNITS ARE INCHES [mm] UNLESS OTHERWISE SPECIFIED
 2. ITEM 6 (CABINET TOP) IS OPTIONAL

TOTAL LEAD WEIGHT	TOTAL CABINET WEIGHT (INCLUDING LEAD)
630 LBS. (286 kg)	1,360 LBS. (618 kg)

REV.	DESCRIPTION	DATE	APPROVED
C	HANDLE/LATCH STYLE CHANGED (WAS CURVED)	7/15/2019	M.S.D.
B	ADDED ITEM 7, SHELVES WERE FIXED	2/1/2014	M.S.D.
A	ADDED WEIGHTS TABLE	2/27/2013	M.S.D.

UNLESS OTHERWISE SPECIFIED

DO NOT SCALE DRAWING DIMENSIONS SHOWN PREFERABLY REFER TO DIMENSIONS IN INCHES [mm] TOLERANCES APPLY AS SHOWN BELOW
 X = ±0.001
 Y = ±0.002
 Z = ±0.005
 ANGLES ±0.007°

ALL MACHINED SURFACES TO BE $\sqrt{10}$
 ALL WELD SPECIFICATIONS PER WELD SHOP

PROPRIETARY
 NO PART OF THIS DOCUMENT MAY BE REPRODUCED, STORED IN A RETRIEVAL SYSTEM, OR TRANSMITTED IN ANY FORM, WITHOUT THE WRITTEN PERMISSION OF MarShield - MGR Metal Company DIVISION OF Marshall Metal Industries Ltd.

SolidWorks MAINTAINED DATA CHANGES SHALL BE INCORPORATED ELECTRONICALLY BY THE DESIGN ACTIVITY

Model Number: _____

Customer/Dealer: _____

Decay and Storage Cabinet Assembly

MS-DSC-0.25-36.5-24-36.5

Scale: 1:4

Sheet: 1 OF 1