

ITEM NO.	QTY	PART NUMBER	DESCRIPTION
1	1	MS-DC-0.25-01-00	BODY
2	1	MS-DC-0.25-02-00	DOOR
3	4	MS-DC-0.5-08-00	LEG
4	2	-----	7" HINGE C/W GREASE NIPPLE
5	1	MS-10-01	OPTIONAL CABINET TOP
6	2	MS-DC-0.25-04-00	ADJUSTABLE SHELF

**CUSTOMER APPROVAL ENDORSEMENT**

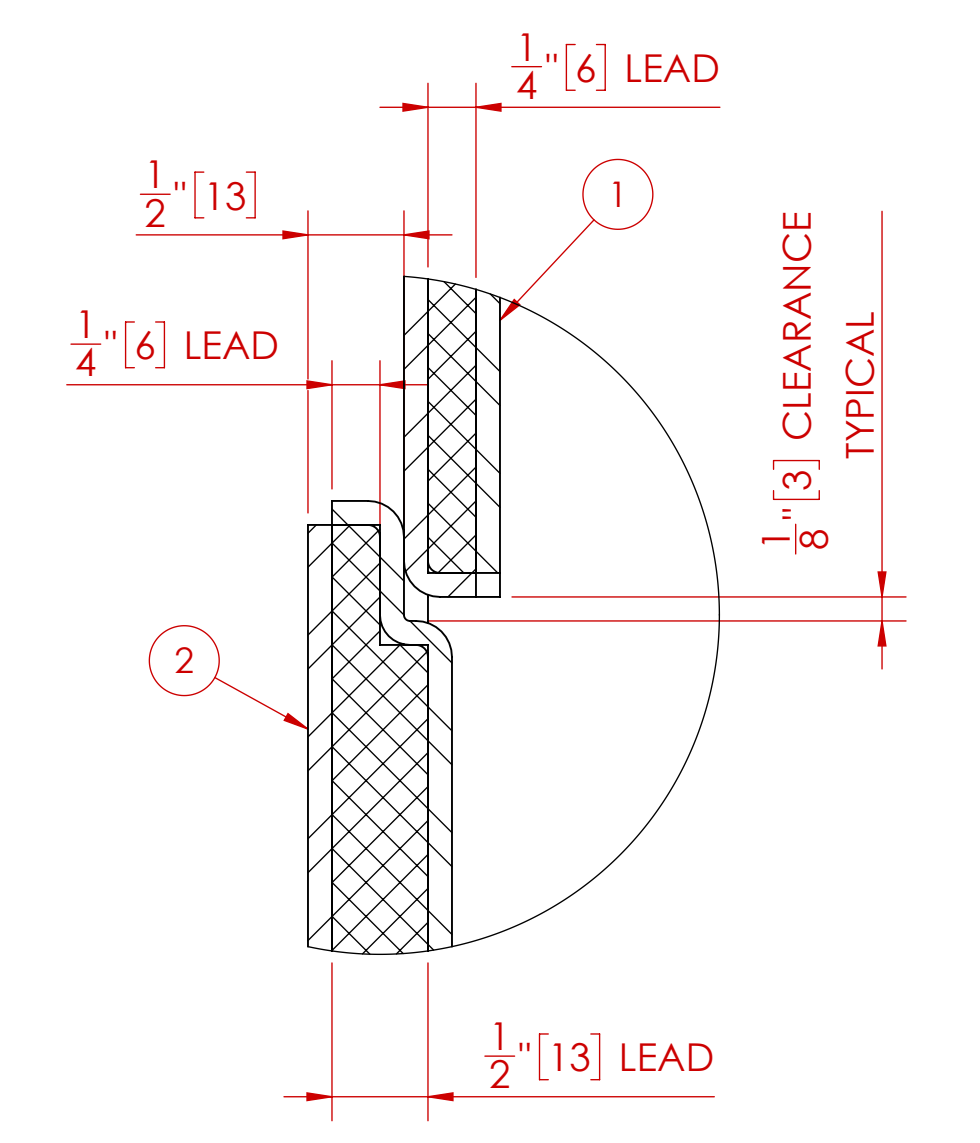
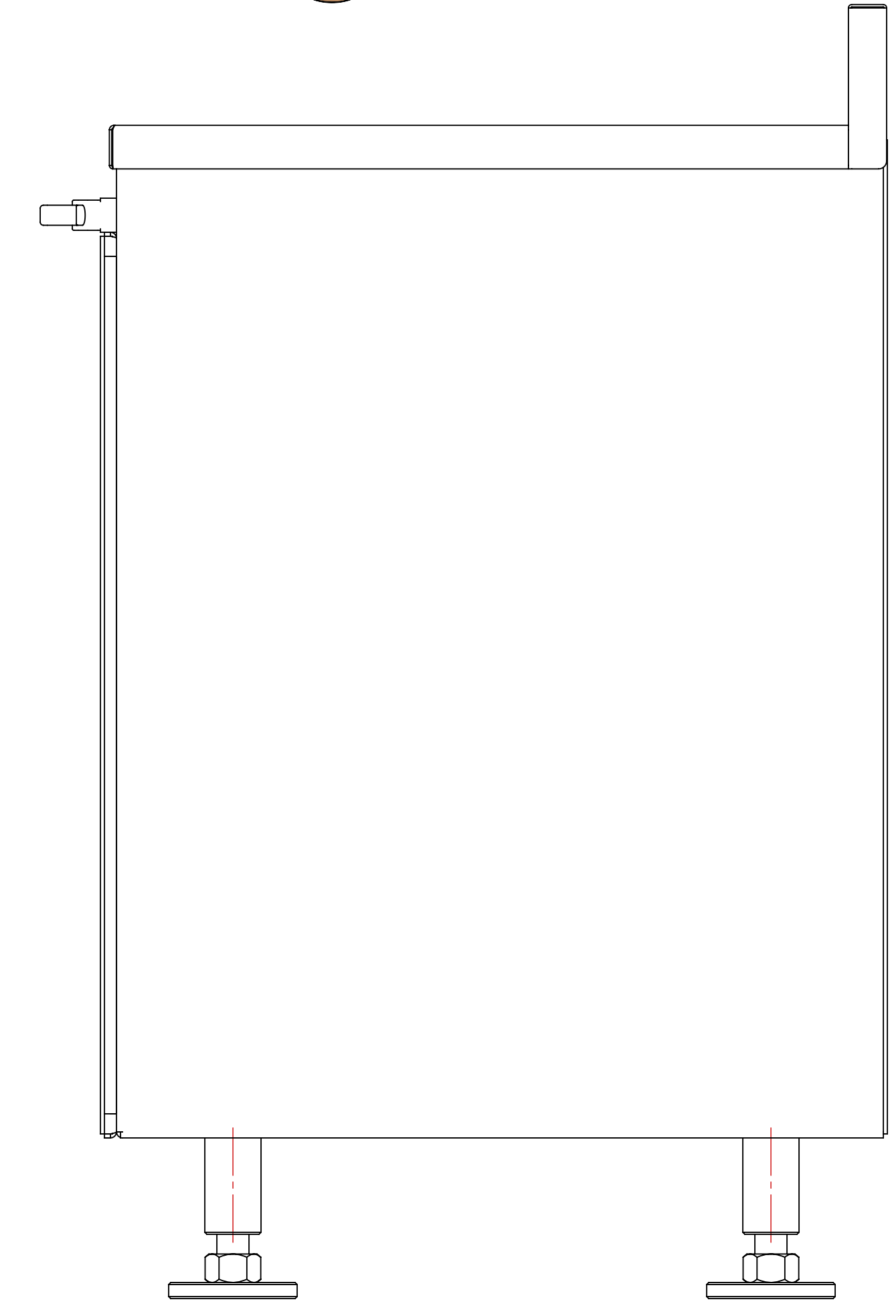
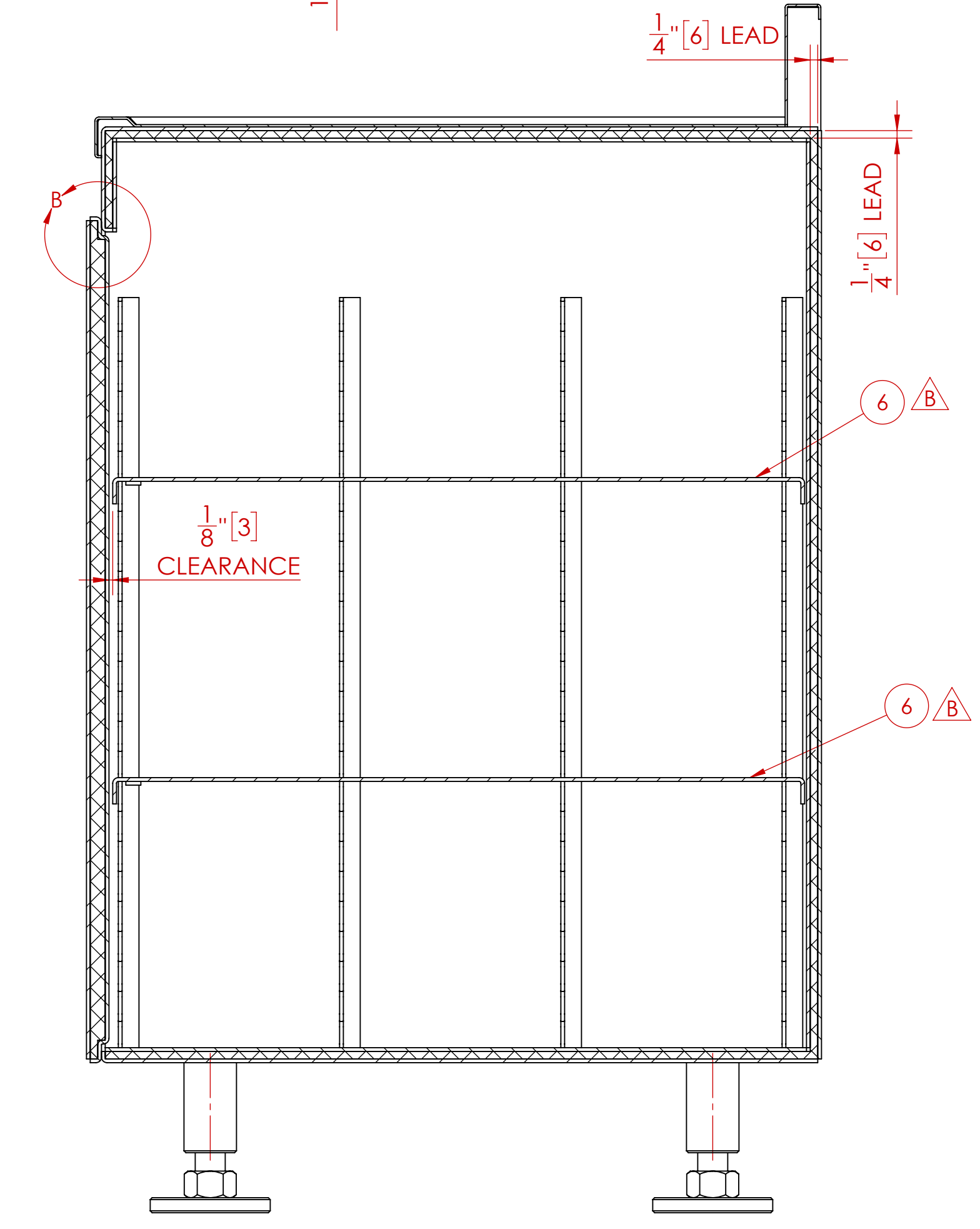
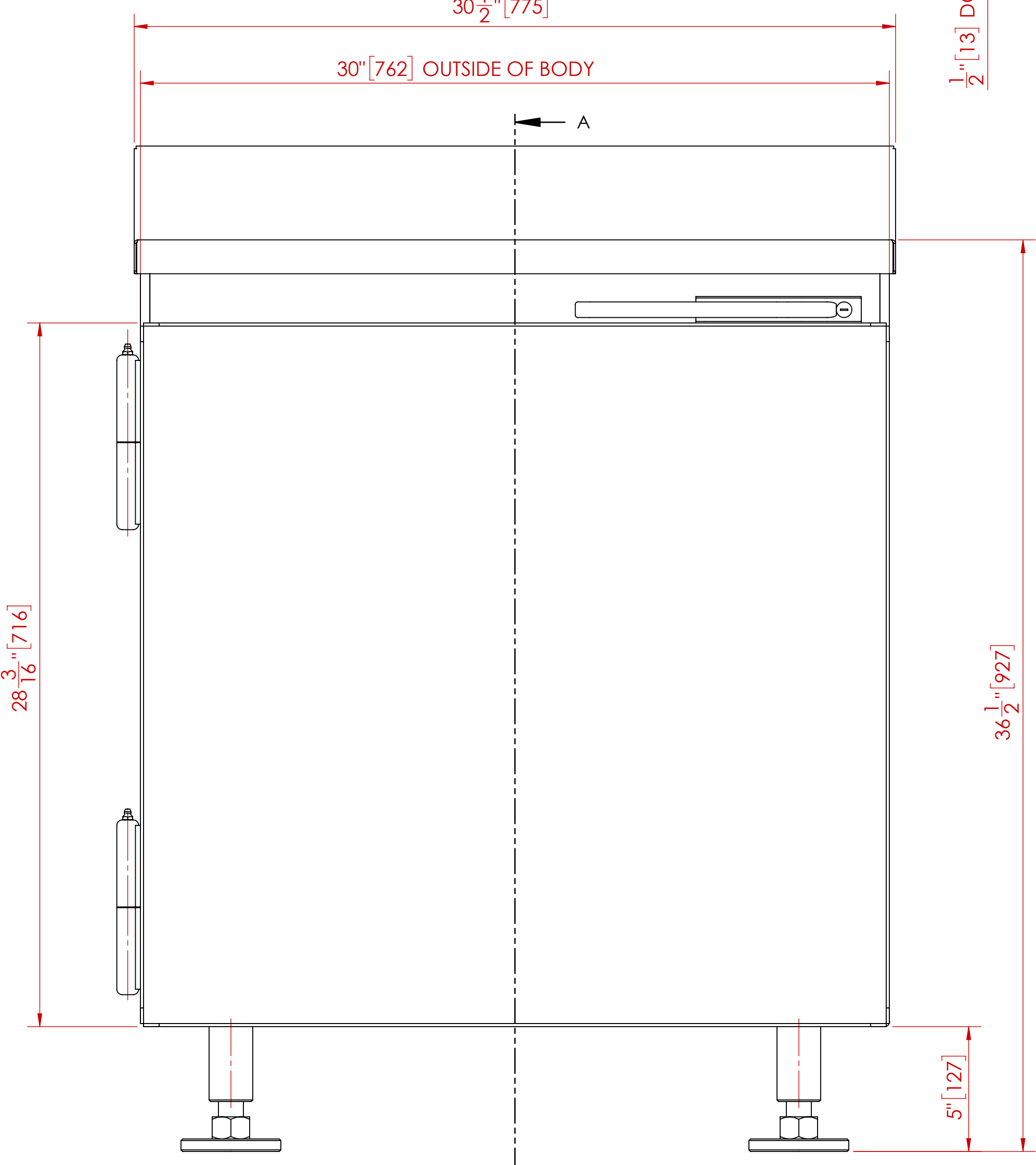
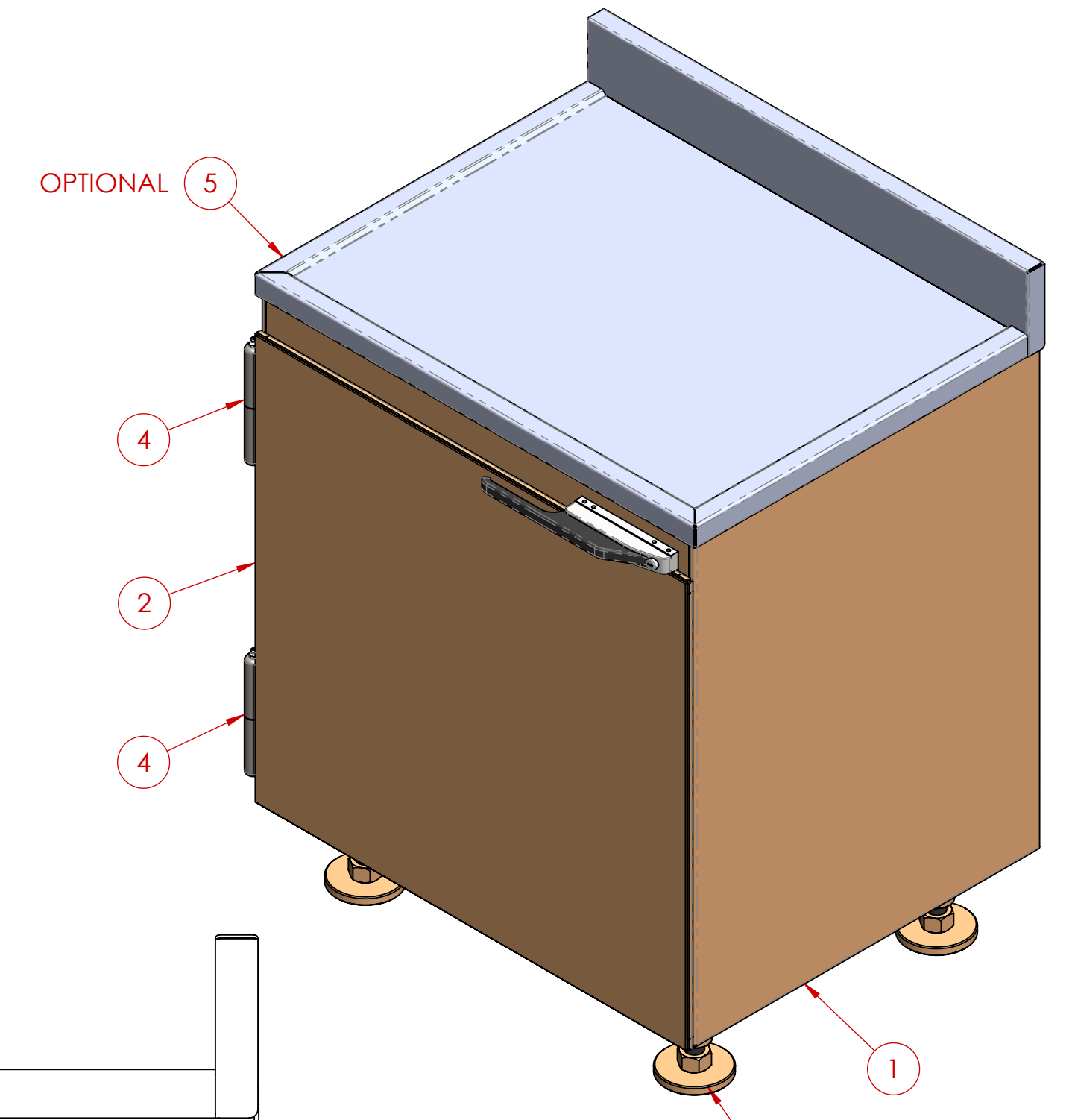
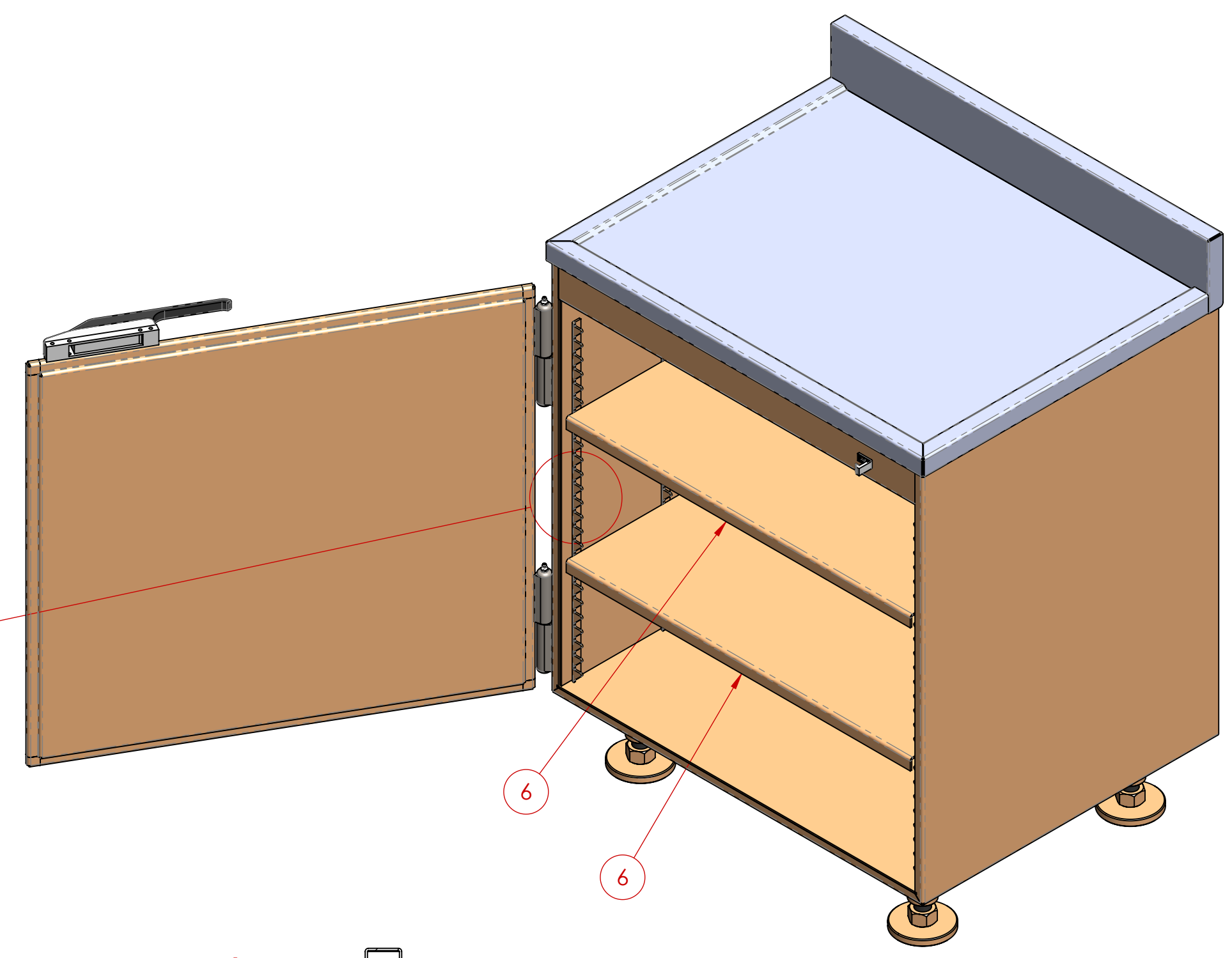
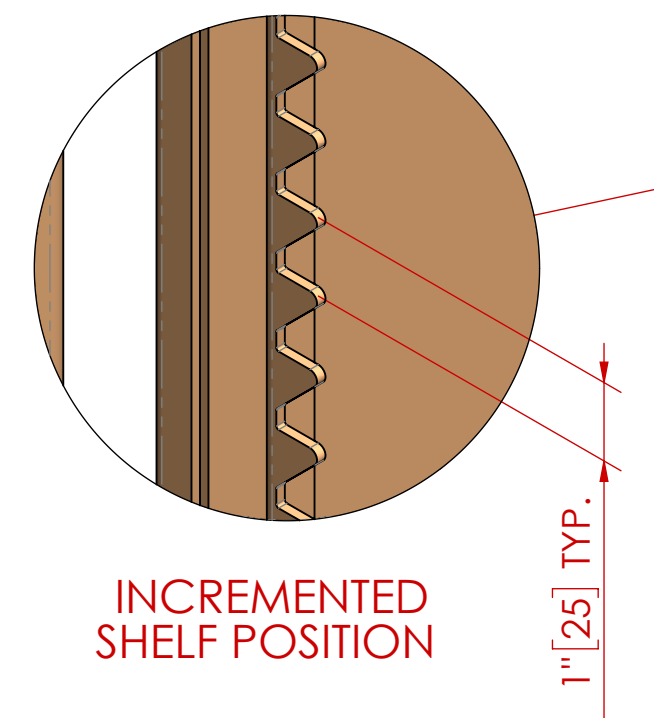
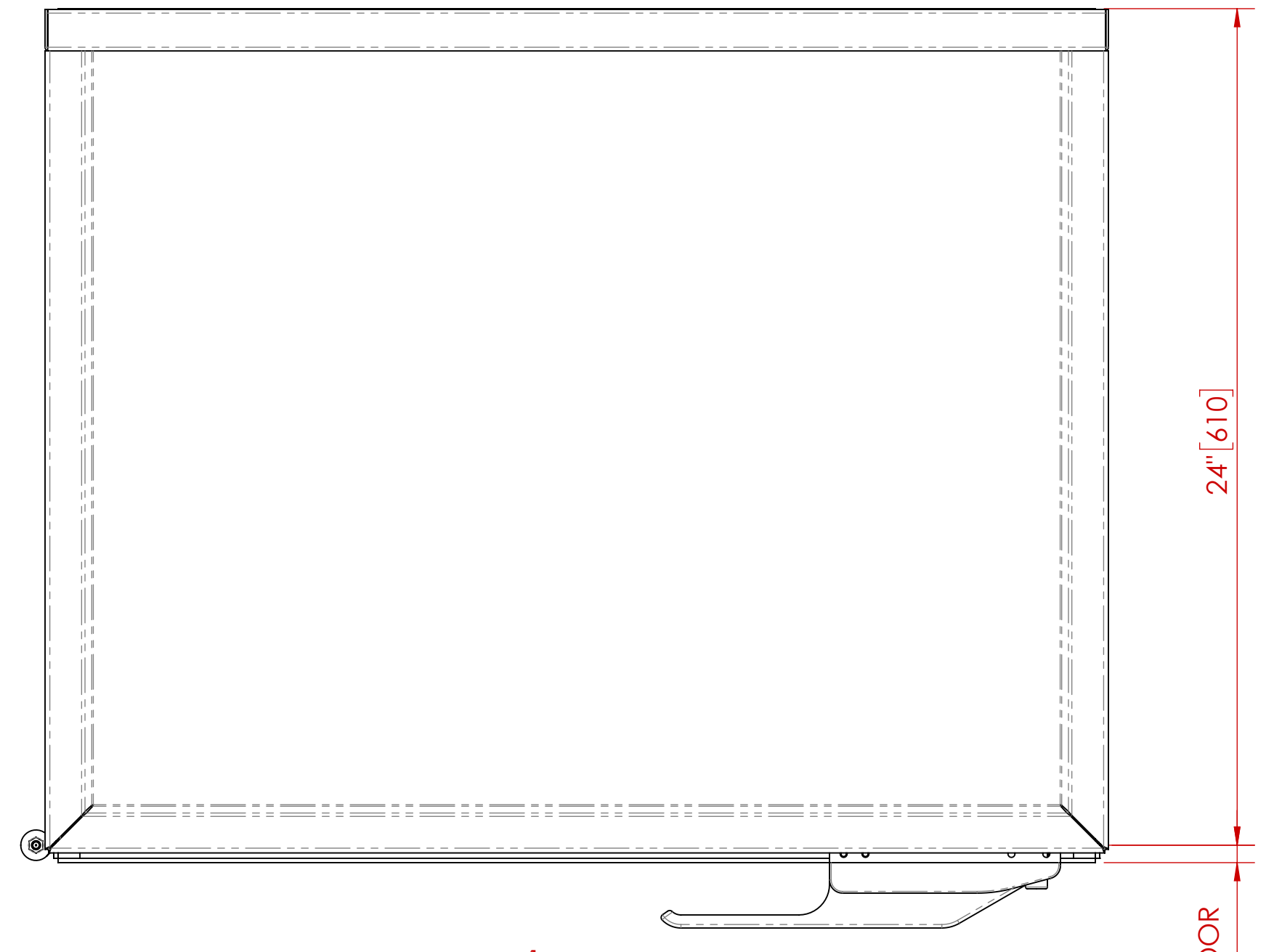
APPROVED AS SHOWN  
 APPROVED WITH CHANGES SHOWN

BY: \_\_\_\_\_ DATE: \_\_\_\_\_

TITLE: \_\_\_\_\_

COMPANY: \_\_\_\_\_

COMMENTS: \_\_\_\_\_



DETAIL B  
SCALE 1 : 1

SECTION A-A

**NOTES:**  
1. ALL UNITS ARE INCHES [mm] UNLESS OTHERWISE SPECIFIED  
2. ITEM 5 (CABINET TOP) IS OPTIONAL

TOTAL LEAD WEIGHT	TOTAL CABINET WEIGHT (INCLUDING LEAD)
552 LBS. (251 kg)	1,027 LBS. (467 kg)

REV.	DESCRIPTION	DATE	APPROVED
C	HANDLE/LATCH STYLE CHANGED (WAS CURVED)	7/16/2019	M.S.D.
B	ADDED ITEM 6, SHELVES WERE FIXED	1/31/2014	M.S.D.
A	ADDED WEIGHTS TABLE	2/27/2013	M.S.D.

UNLESS OTHERWISE SPECIFIED  
DO NOT SCALE DRAWING  
DIMENSIONS SHOWN  
PARENTS ARE FOR  
REFERENCE ONLY (XX)  
DIMENSIONS ARE IN INCHES [mm]  
TOLERANCES APPLY AS SHOWN BELOW  
X = ±0.005  
XX = ±0.010  
XXX = ±0.020  
ANGLE ± 0.5°

ALL MACHINED SURFACES TO BE  $\sqrt{16}$   
ALL WELD SPECIFICATIONS PER WELD SHOP

SolidWorks MAINTAINED DATA CHANGES SHALL BE INCORPORATED ELECTRONICALLY BY THE DESIGN ACTIVITY

MODELS NUMBER: \_\_\_\_\_

DRAWN BY: M.S.D. DATE: 2/6/2013

CHECKED BY: \_\_\_\_\_ DATE: \_\_\_\_\_

APPROVED: \_\_\_\_\_ DATE: \_\_\_\_\_

**MatShield** Custom Radiation Protection, Shielding and Storage

TITLE: DECAY CABINET ASSEMBLY

CUSTOMER/DEALER: \_\_\_\_\_

SCALE: 1:4 HEIGHT: 1 SHEET 1 OF 1

MS-DC-0.25-30.5-24-36.5