

When protection & safety must be **Absolutely Assured**

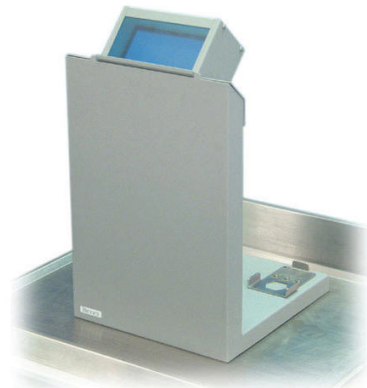
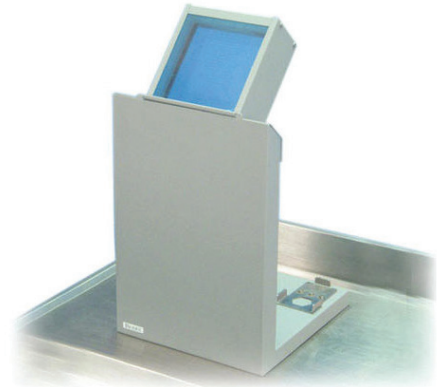


L-BLOCK SHIELDS

MarShield's L-Block Shields are designed for receiving and preparing unit doses of high-energy radionuclide.

KEY FEATURES

- L-Blocks provide a choice of 1.5" or 2" thick lead shielding in front, and 1" thick lead in the base
- L-Blocks may be ordered with either an 8" x 4" x 4" or 8" x 8" x 4" lead glass window
- Special plate with a hex-shaped recess is mounted on the base to facilitate one-handed loading and unloading of dose pigs incorporating hex-shaped bottoms
- Optional Lead Brick Cave may be added to provide lateral shielding around the full perimeter of the L-Block's base
- L-Blocks are shipped in modular form for easy installation without lifting equipment. No component weighs more than 50 pounds



ORDERING INFORMATION

| MODEL NUMBERS | PRODUCT DETAILS |
|---------------|--|
| MS-042-428 | L-Block Shield, 1.5" lead with 8" x 4" x 4" lead glass window. |
| MS-042-419 | L-Block Shield, 1.5" lead with 8" x 8" x 4" lead glass window. |
| MS-042-449 | L-Block Shield, 2" lead with 8" x 8" x 4" lead glass window. |
| Related: | |
| MS-042-425 | Lead Brick Cave, 3-wall, 2" lead. Fits 042-428 and 042-419 L-Block Shields. |
| MS-042-426 | Lead Brick Cave, 3 Wall, 2" lead. Fits 042-428, 042-449 and 042-419 L-Block Shields Accommodates 042-466 PET Dose Drawing System. |
| MS-042-407 | Table, Steel. |



L-BLOCK SHIELDS

SPECIFICATIONS

MS-042-428 L-Block Shield

(8" x 4" x 4" window)

Dimensions:

14" w x 15" d x 21.6" h (36 x 38 x 55 cm)

Lead Shielding:

- Front: 1.5" (3.8 cm) thick
- Base: 1" (2.5 cm) thick

Lead Glass Window:

- Dimensions: 8" w x 4" h x 4" thick (20 x 10 x 10 cm)
- Density: 5.2 g/cm³

Finish: Powder coat

Weight: 270 lb (122 kg)

Shipping Weight: 330 lb (149.6 kg)

MS-042-419 L-Block Shield

(8" x 8" x 4" window)

Dimensions:

14" w x 15" d x 24.7" h (36 x 38 x 62 cm)

Lead Shielding:

- Front: 1.5" (3.8 cm) thick
- Base: 1" (2.5 cm) thick

Lead Glass Window:

- Dimensions: 8" w x 8" h x 4" thick (20 x 20 x 10 cm)
- Density: 5.2 g/cm³

Finish: Powder coat

Weight: 290 lb (131 kg)

Shipping Weight: 355 lb (161 kg)

MS-042-449 L-Block Shield, 2" lead

(8" x 8" x 4" lead glass window)

Dimensions:

14" w x 18" depth x 24.7" h (36 x 46 x 62 cm)

Lead Shielding:

- Front: 2" thick (5.08 cm)
- Base: 1" thick (2.5 cm)

Lead Glass Window:

- Dimensions: 8" w x 8" h x 4" thick (20 x 20 x 10 cm)
- Density: 5.2g/cm³

Finish: Powder Coat

Weight: 345 lb (156 kg)

Shipping Weight: 420 lb (191 kg)

MS-042-449 L-Block Shield, 2" lead

(8" x 8" x 4" lead glass window)

Dimensions:

- I.D.: 14" w x 15" depth x 16" h (35 x 38.1 x 40.6 cm)

Lead Shielding: 2" thick (6 cm)

Finish: Paint

Weight: 492 lb (223 kg)

MS-042-426 Interlocking Lead Brick Cave

Dimensions:

- I.D.: 18" w x 17.8" depth x 13.8" h (45.7 x 45.3 x 34.6 cm)

Lead Shielding: 2" thick (5 cm)

Finish: Paint

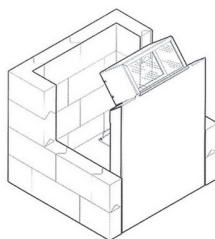
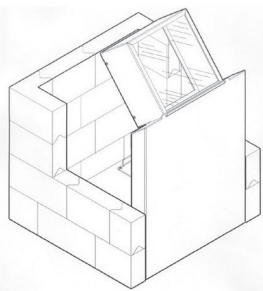
Weight: 532 lb (241 kg)

MS-042-407 Steel Table

Dimensions:

36.75" w x 24" depth x 36" h (93.5 x 61 x 91.5 cm)

Shipping Weight: 195 lb (88 kg)



1.800.381.5335 | sales@marshield.com | www.marshield.com

LEAD LINED STORAGE CONTAINERS • MODULAR RADIATION BARRIERS & WALLS • MODULAR X-RAY ROOMS • ROLLING RADIATION BARRIERS • SHEET LEAD