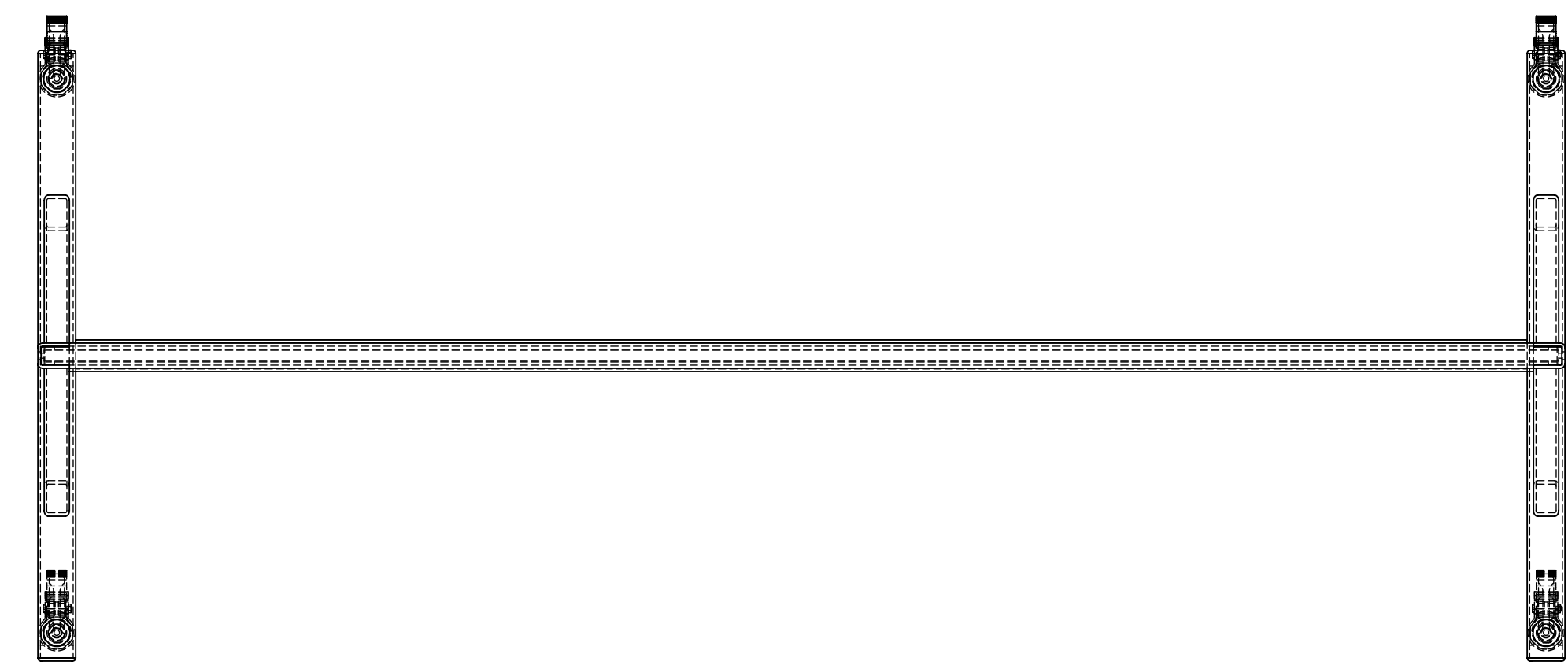


8 7 6 5 4 3 2 1



60 ⁵/₈"

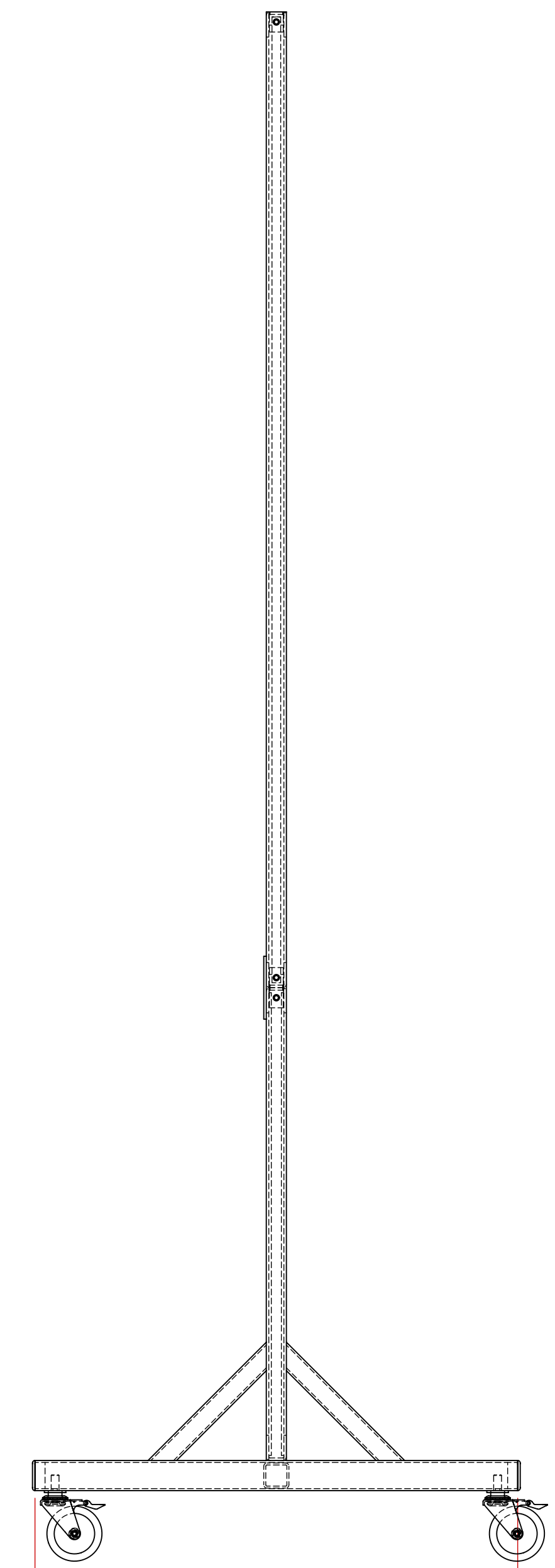
48 ¹/₂"

23 ¹/₂"

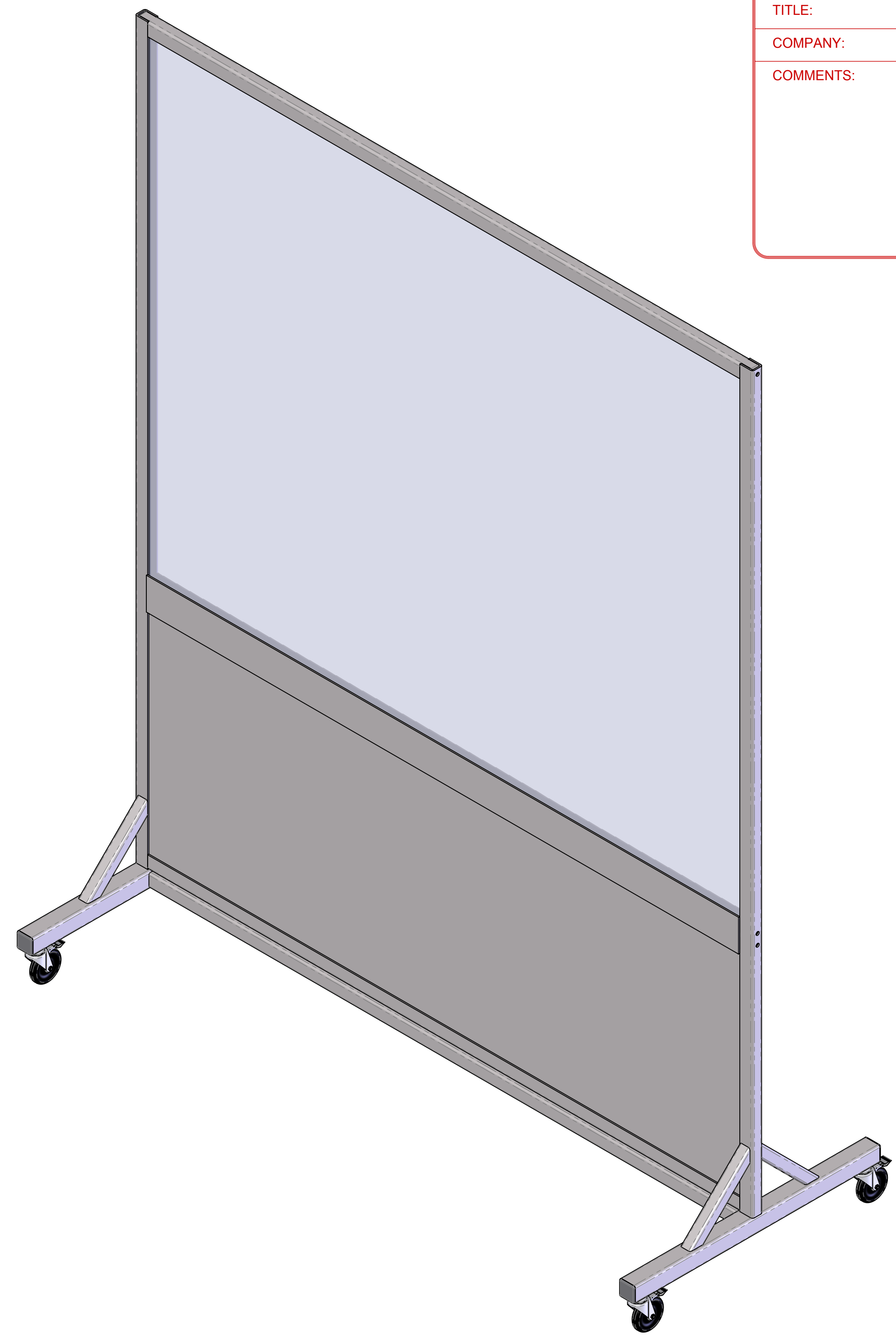
77" OVERALL HEIGHT (INCLUDING WHEELS)

SAF-T-LITE
SAFETY LEAD GLASS
1/16" (1.6 mm) LEAD EQUIVALENT
60" WIDE X 48" HIGH

SOLID PANEL
1/32" (0.8 mm) LEAD LINED
LEADED PLYWOOD
ENCAPSULATED BETWEEN
ABS PLASTIC PANELS BOTH SIDES



24"



CUSTOMER APPROVAL ENDORSEMENT

APPROVED AS SHOWN

APPROVED WITH CHANGES SHOWN

BY: _____ DATE: _____

TITLE: _____

COMPANY: _____

COMMENTS: _____

NOTES:

1. ALL UNITS ARE INCHES (mm) UNLESS OTHERWISE SPECIFIED
2. DIMENSIONAL TOLERANCES: +/- 1/4"
3. GLASS INSTALLED ON SITE BY END USER - GLASS SHIPPED SEPARATELY

UNLESS OTHERWISE SPECIFIED		SolidWorks MAINTAINED DATA CHANGES SHALL BE INCORPORATED ELECTRONICALLY BY THE DESIGN ACTIVITY		MarShield Custom Radiation Protection, Shielding and Storage	
DO NOT SCALE DRAWING DIMENSIONS SHOWN IN PARENTS ARE FOR REFERENCE ONLY (XXX) DIMENSIONS ARE IN INCHES (mm) TOLERANCES APPLY AS SHOWN BELOW X = ± 0.005 XX = ± 0.010 XXX = ± 0.020 ANGLES ± 0.004°	ALL MACHINED SURFACES TO BE \sqrt{R}	ALL WELD SPECIFICATIONS PER WELD SHOP	MODEL NUMBER:	TITLE: ROLLING BARRIER ASSEMBLY	CUSTOMER/DEALER:
PROPRIETARY NO PART OF THIS DOCUMENT MAY BE REPRODUCED, STORED IN A RETRIEVAL SYSTEM, OR TRANSMITTED IN ANY FORM, WITHOUT THE WRITTEN PERMISSION OF MarShield - Mgrs Metal Company DIVISION OF Marshwell Metal Industries Ltd.			DRAWN BY: M.S.D. DATE: 6/18/2018	MSRB 604824-0.8 Rev.4-19	SCALE: 1:6 SHEET 1 OF 1