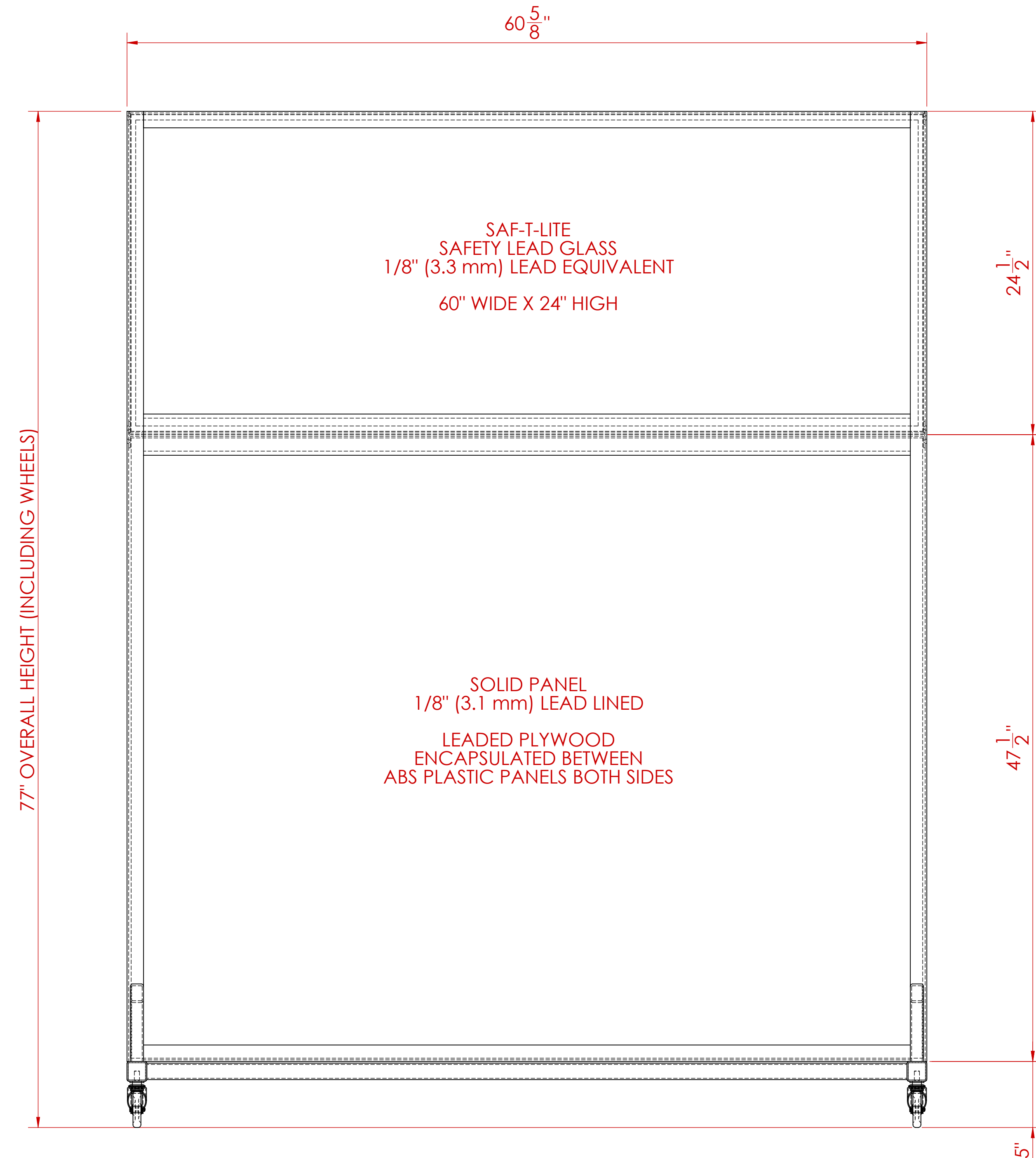
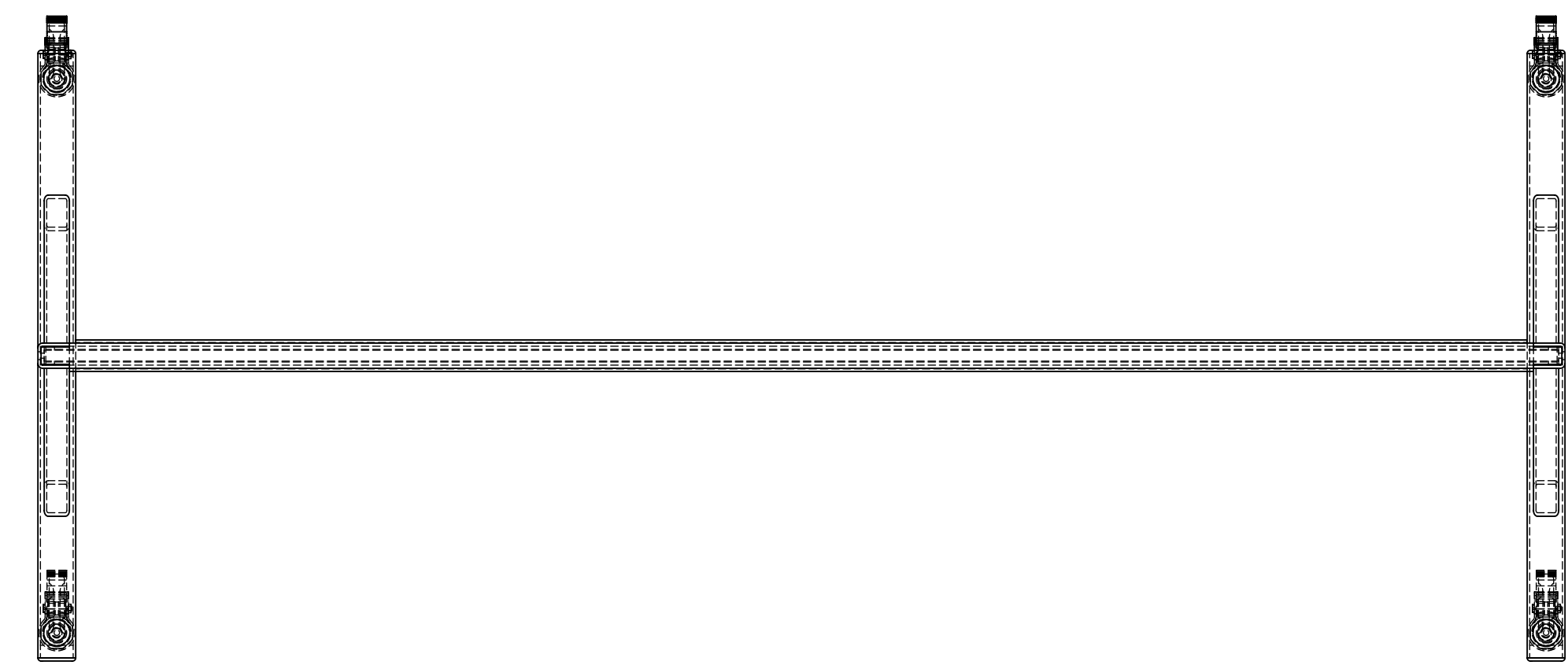


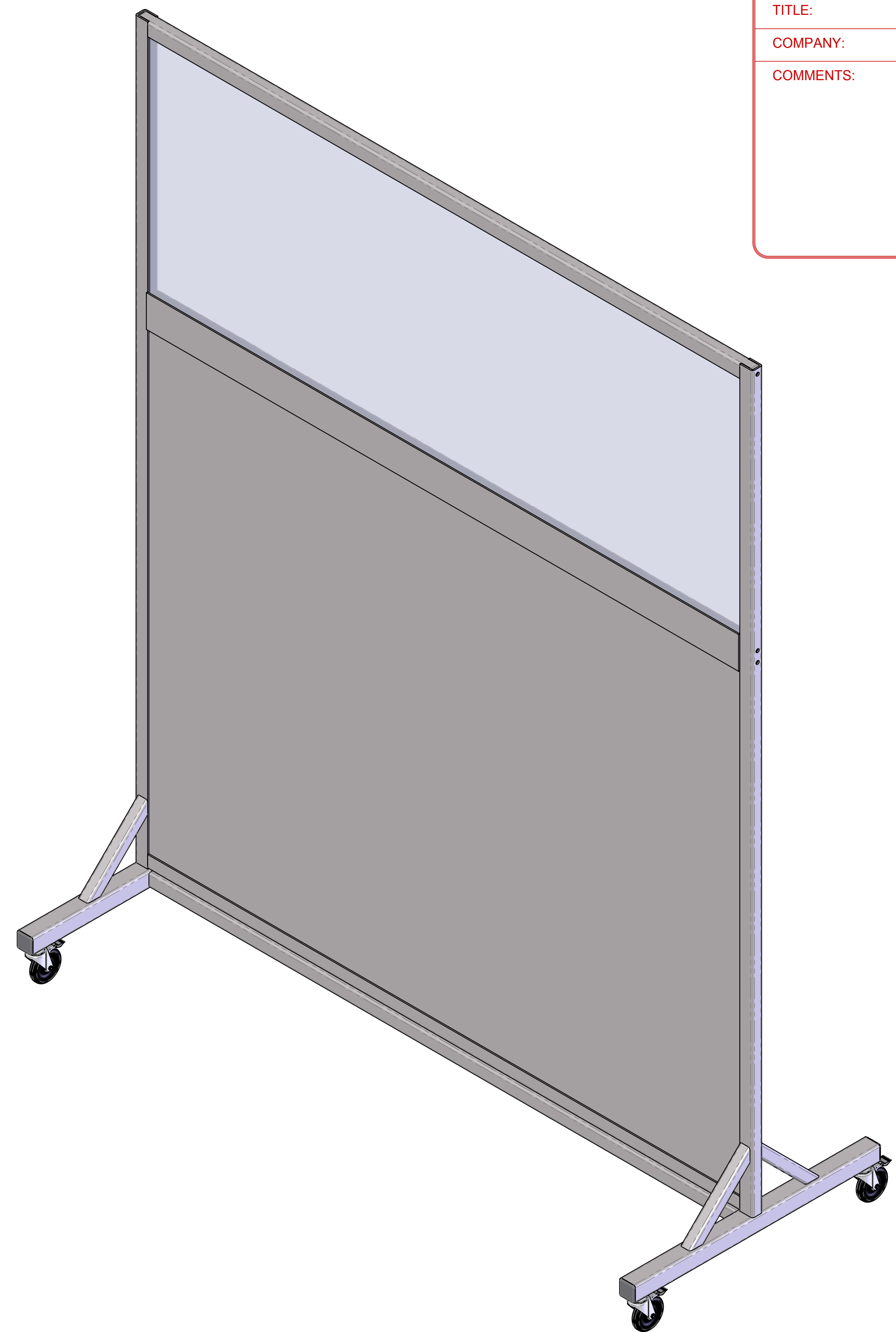
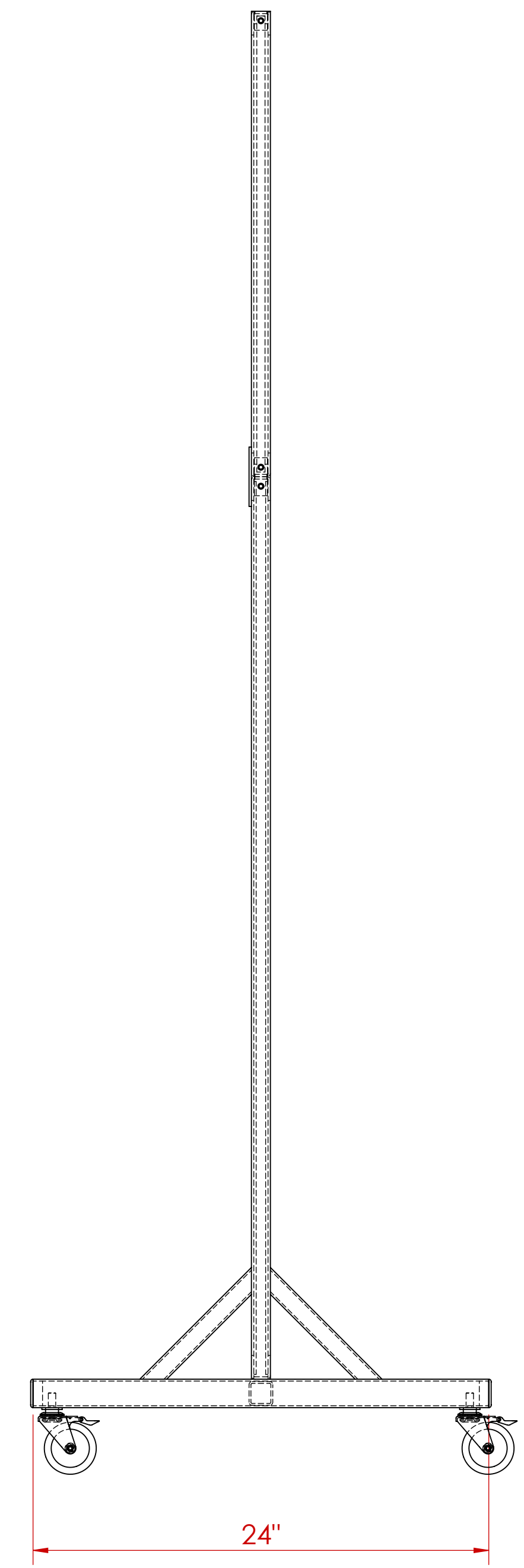
8 7 6 5 4 3 2 1



SAF-T-LITE  
SAFETY LEAD GLASS  
1/8" (3.3 mm) LEAD EQUIVALENT  
60" WIDE X 24" HIGH

SOLID PANEL  
1/8" (3.1 mm) LEAD LINED  
LEADED PLYWOOD  
ENCAPSULATED BETWEEN  
ABS PLASTIC PANELS BOTH SIDES

77" OVERALL HEIGHT (INCLUDING WHEELS)



**CUSTOMER APPROVAL  
ENDORSEMENT**

APPROVED AS SHOWN

APPROVED WITH CHANGES SHOWN

BY: \_\_\_\_\_ DATE: \_\_\_\_\_

TITLE: \_\_\_\_\_

COMPANY: \_\_\_\_\_

COMMENTS: \_\_\_\_\_

- NOTES:**
1. ALL UNITS ARE INCHES (mm) UNLESS OTHERWISE SPECIFIED
  2. DIMENSIONAL TOLERANCES: +/- 1/4"
  3. GLASS INSTALLED ON SITE BY END USER - GLASS SHIPPED SEPARATELY

<p>UNLESS OTHERWISE SPECIFIED</p> <p>DO NOT SCALE DRAWING DIMENSIONS SHOWN IN PARENTS ARE FOR REFERENCE ONLY (XX) DIMENSIONS ARE IN INCHES (mm) TOLERANCES APPLY AS SHOWN BELOW X = ± 0.001 XX = ± 0.002 XXX = ± 0.005 ANGLES ± 0.004°</p>	<p>ALL MACHINED SURFACES TO BE </p> <p>SolidWorks MAINTAINED DATA CHANGES SHALL BE INCORPORATED ELECTRONICALLY BY THE DESIGN ACTIVITY</p>			<p>TITLE: <b>ROLLING BARRIER ASSEMBLY</b></p> <p>CUSTOMER/DEALER: _____</p> <p>DRAWN BY: M.S.D. DATE: 6/15/2018</p> <p>CHECKED BY: _____ DATE: _____</p> <p>APPROVED BY: _____ DATE: _____</p> <p>SCALE: 1:6</p>	<p>PROPRIETARY NO PART OF THIS DOCUMENT MAY BE REPRODUCED, STORED IN A RETRIEVAL SYSTEM, OR TRANSMITTED IN ANY FORM, WITHOUT THE WRITTEN PERMISSION OF MarShield - MGR Metal Company DIVISION OF Marshfield Metal Industries Ltd.</p> <p>MODEL NUMBER: _____</p> <p>DATE: 6/15/2018</p> <p>SCALE: 1:6</p>
				<p><b>MSRB 602448-3.1 Rev.4-19</b></p>	<p>SHEET 1 OF 1</p>

8 7 6 5 4 3 2 1