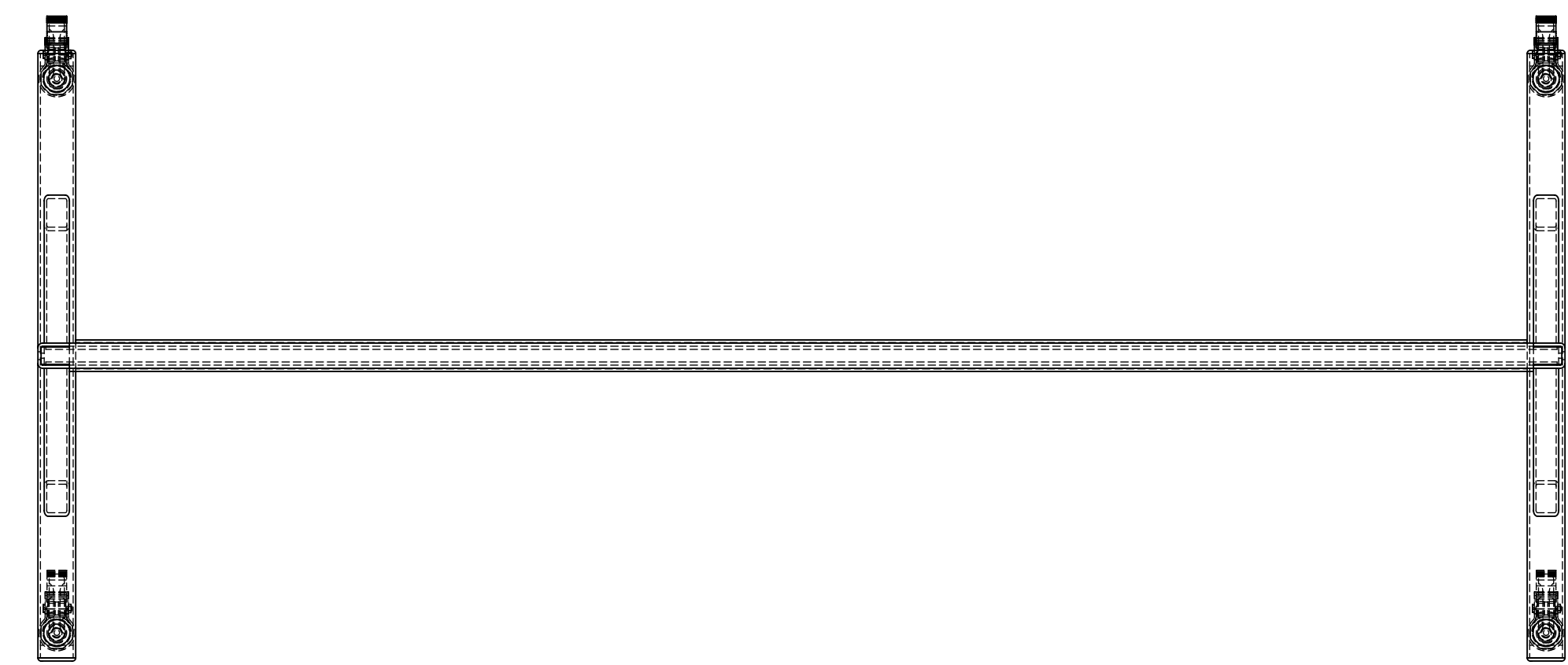


8 7 6 5 4 3 2 1



60 ⁵/₈"

77" OVERALL HEIGHT (INCLUDING WHEELS)

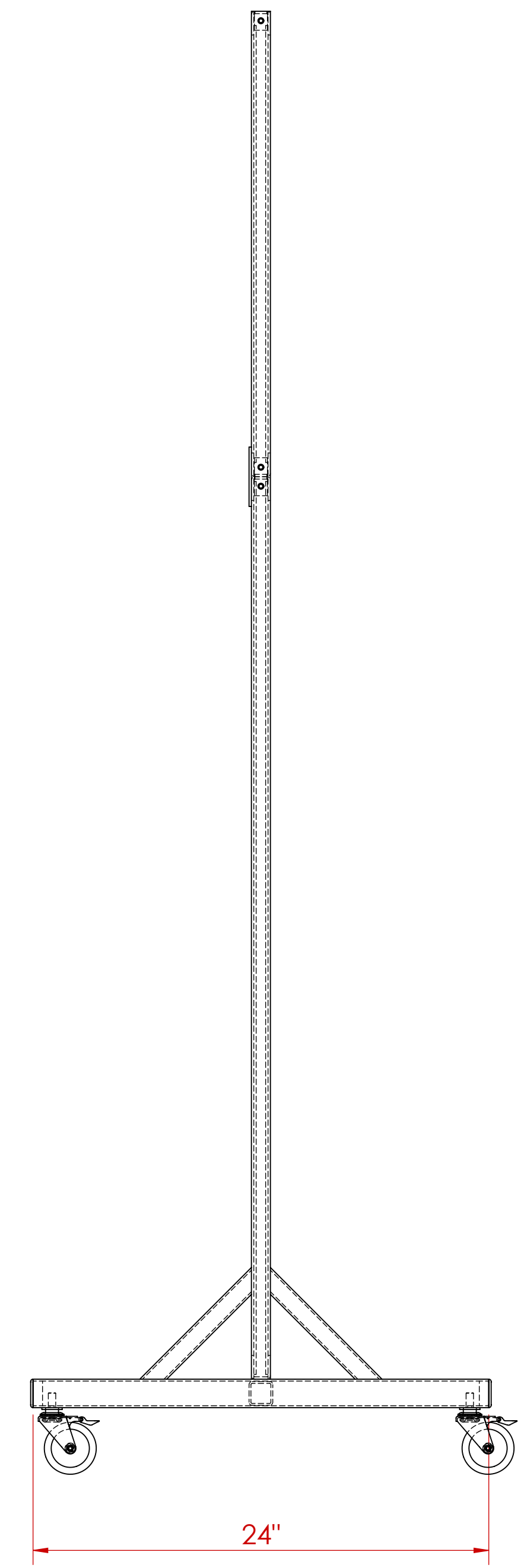
SOLID PANEL
1/32" (0.8 mm) LEAD LINED
LEADED PLYWOOD
ENCAPSULATED BETWEEN
ABS PLASTIC PANELS BOTH SIDES

24 ¹/₂"

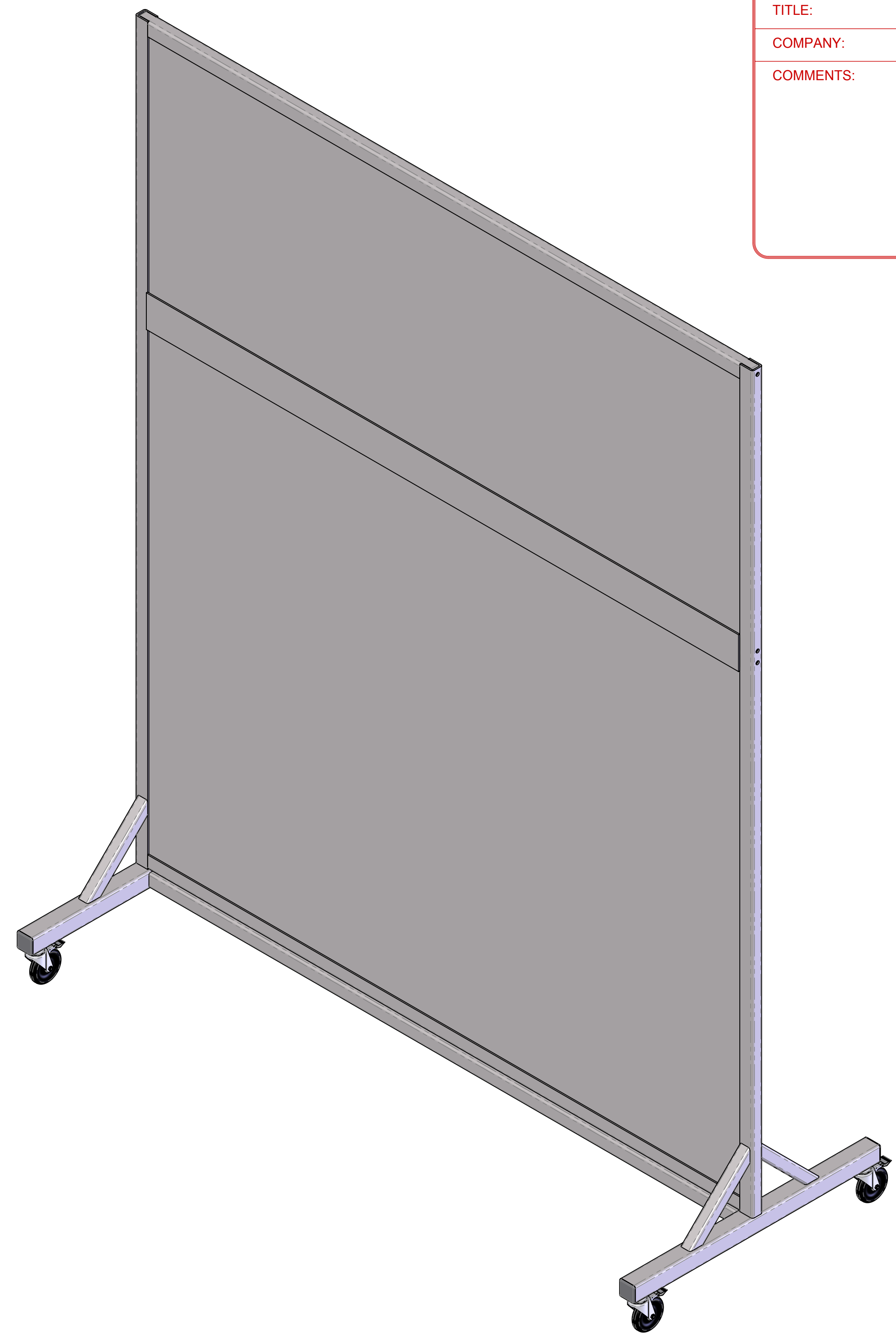
SOLID PANEL
1/32" (0.8 mm) LEAD LINED
LEADED PLYWOOD
ENCAPSULATED BETWEEN
ABS PLASTIC PANELS BOTH SIDES

47 ¹/₂"

5"



24"



CUSTOMER APPROVAL ENDORSEMENT

APPROVED AS SHOWN

APPROVED WITH CHANGES SHOWN

BY: _____ DATE: _____

TITLE: _____

COMPANY: _____

COMMENTS: _____

NOTES:

- ALL UNITS ARE INCHES (mm) UNLESS OTHERWISE SPECIFIED
- DIMENSIONAL TOLERANCES: +/- 1/4"

UNLESS OTHERWISE SPECIFIED		SolidWorks MAINTAINED DATA CHANGES SHALL BE INCORPORATED ELECTRONICALLY BY THE DESIGN ACTIVITY		MarShield Custom Radiation Protection, Shielding and Storage	
DO NOT SCALE DRAWING DIMENSIONS SHOWN IN PARENTS ARE FOR REFERENCE ONLY (XXX) DIMENSIONS ARE IN INCHES (mm) TOLERANCES APPLY AS SHOWN BELOW X = ± 0.001 XX = ± 0.002 XXX = ± 0.005 ANGLES ± 0.001°	ALL MACHINED SURFACES TO BE 12.5 ALL WELD SPECIFICATIONS PER WELD SHOP	MODEL NUMBER:	DATE: 6/18/2018	MSRB 600072-0.8 Rev.4-19	
PROPRIETARY NO PART OF THIS DOCUMENT MAY BE REPRODUCED, STORED IN A RETRIEVAL SYSTEM, OR TRANSMITTED IN ANY FORM, WITHOUT THE WRITTEN PERMISSION OF MarShield - MGR Metal Company DIVISION OF Marshfield Metal Industries Ltd.		DRAWN BY: M.S.D.	CHECKED BY:	DATE:	TITLE: ROLLING BARRIER ASSEMBLY CUSTOMER/DEALER: _____ SCALE: 1:6 SHEET 1 OF 1