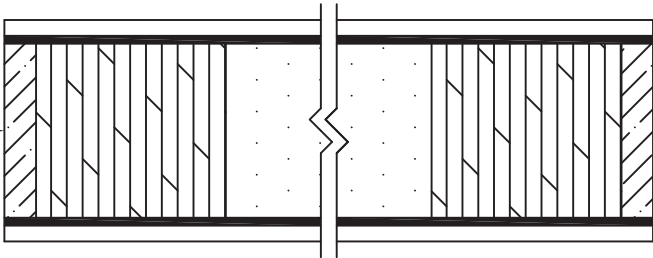
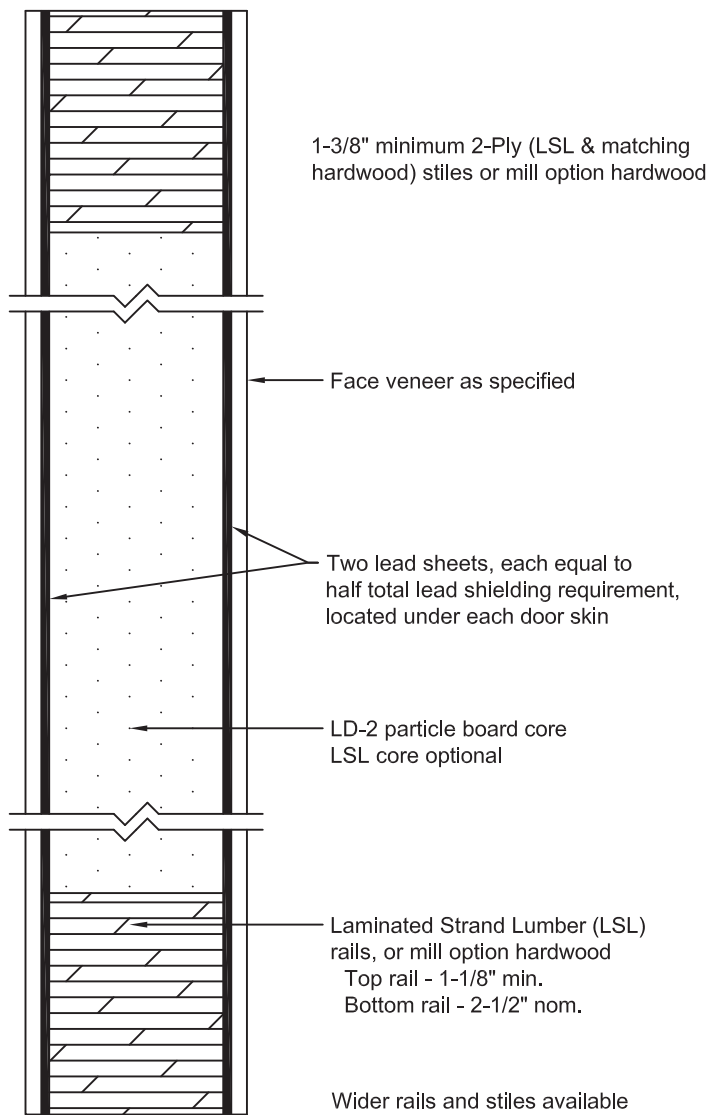


CORECLAD® Series Door  
Lead Lined Wood Door



| LEAD THICKNESS | DOOR THICKNESS | 3070 DOOR WEIGHT (IN POUNDS) | 4070 DOOR WEIGHT (IN POUNDS) |
|----------------|----------------|------------------------------|------------------------------|
| 1/32"          | 1-3/4"         | 193                          | 258                          |
| 1/16"          | 1-3/4"         | 193                          | 258                          |
| 5/64"          | 1-3/4"         | 214                          | 286                          |
| 3/32"          | 1-3/4"         | 235                          | 314                          |
| 1/8"           | 1-3/4"         | 267                          | 356                          |
| 5/32"          | 1-13/16"       | 319                          | 426                          |
| 3/16"          | 1-7/8"         | 361                          | 482                          |
| 1/4"           | 1-15/16"       | 439                          | 585                          |
| 3/8"           | 2-1/4"         | 609                          | 812                          |

NOTES:

- 1 Use minimum undercut (1/4" is standard)
- 2 Wood and metal vision kits are available
- 3 Center lead door supplied for all lead above 3/8" thickness

- Door types available:
- 1. Non-Rated
  - 2. 20-minute Neutral pressure
  - 3. 20-minute positive pressure Cat. "A" with concealed intumescent
  - 4. 20-minute positive pressure Cat. "B" with frame mount intumescent

NOTE: Frame mounted listed and approved, smoke gasket required for postive pressure doors for "S" (smoke) label