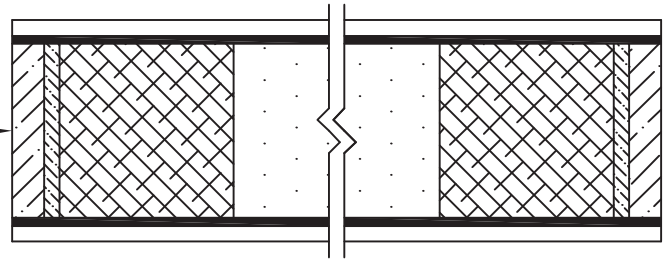
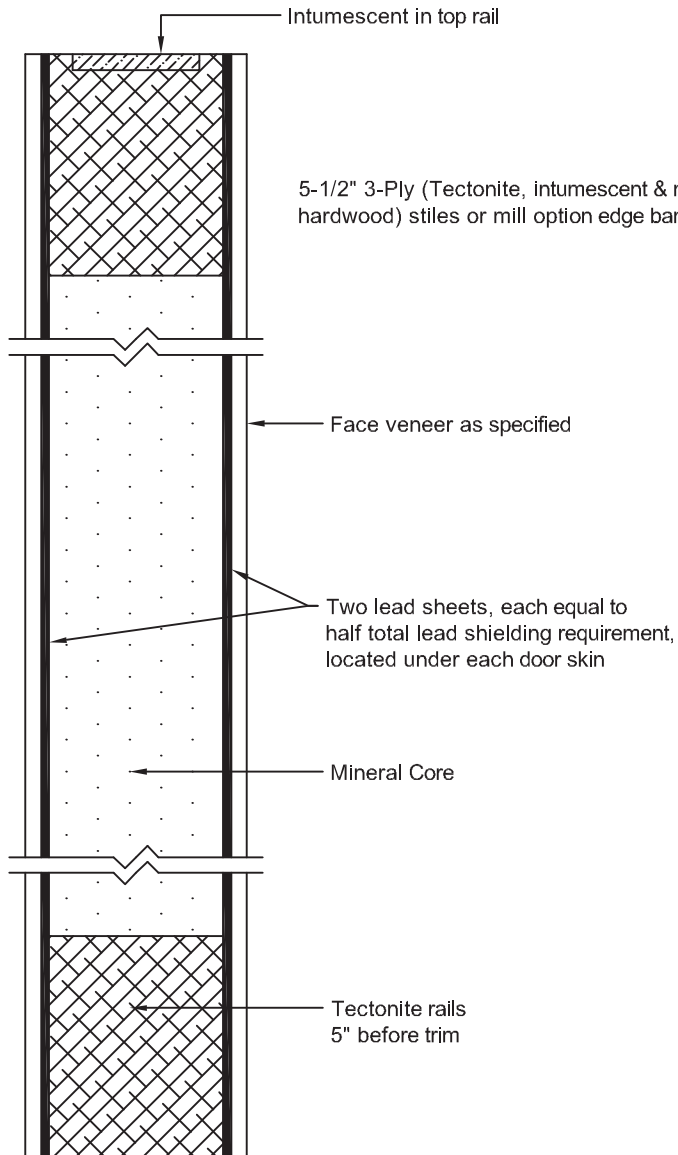


CORECLAD<sup>®</sup> Series Door  
Lead Lined Wood Door – 45 & 60 Minute  
[U.S. Patent No. 7,598,460]

**MarShield**<sup>™</sup>  
EVERY SOLUTION IN SHIELDING



LEAD THICKNESS	DOOR THICKNESS	3070 DOOR WEIGHT (IN POUNDS)	4070 DOOR WEIGHT (IN POUNDS)
1/32"	1-3/4" *	198	264
1/16"	1-3/4" *	198	264
5/64"	1-3/4" *	239	319
3/32"	1-3/4" *	239	319
1/8"	1-3/4" *	280	374
5/32"	1-13/16" *	321	428
3/16"	1-7/8" *	362	483
1/4"	1-15/16" *	444	593

\* Add 1/8" to thickness shown for plastic laminate doors!

Notes:

1. Positive Pressure per UBC 7-2-1997 with Concealed Intumescent. Frame mounted listed and approved smoke gasket required for these doors to receive "S" (smoke) label.
2. Wood veneer door thickness for lead above 1/8" varies as lead thickness varies. Plastic laminate faced doors are slightly thicker. Consult factory for actual door thickness and any special frame requirements.
3. For paired openings an A&L furnished lead lined metal edge and astragal set must be used to prevent radiation leaks at meeting stiles.