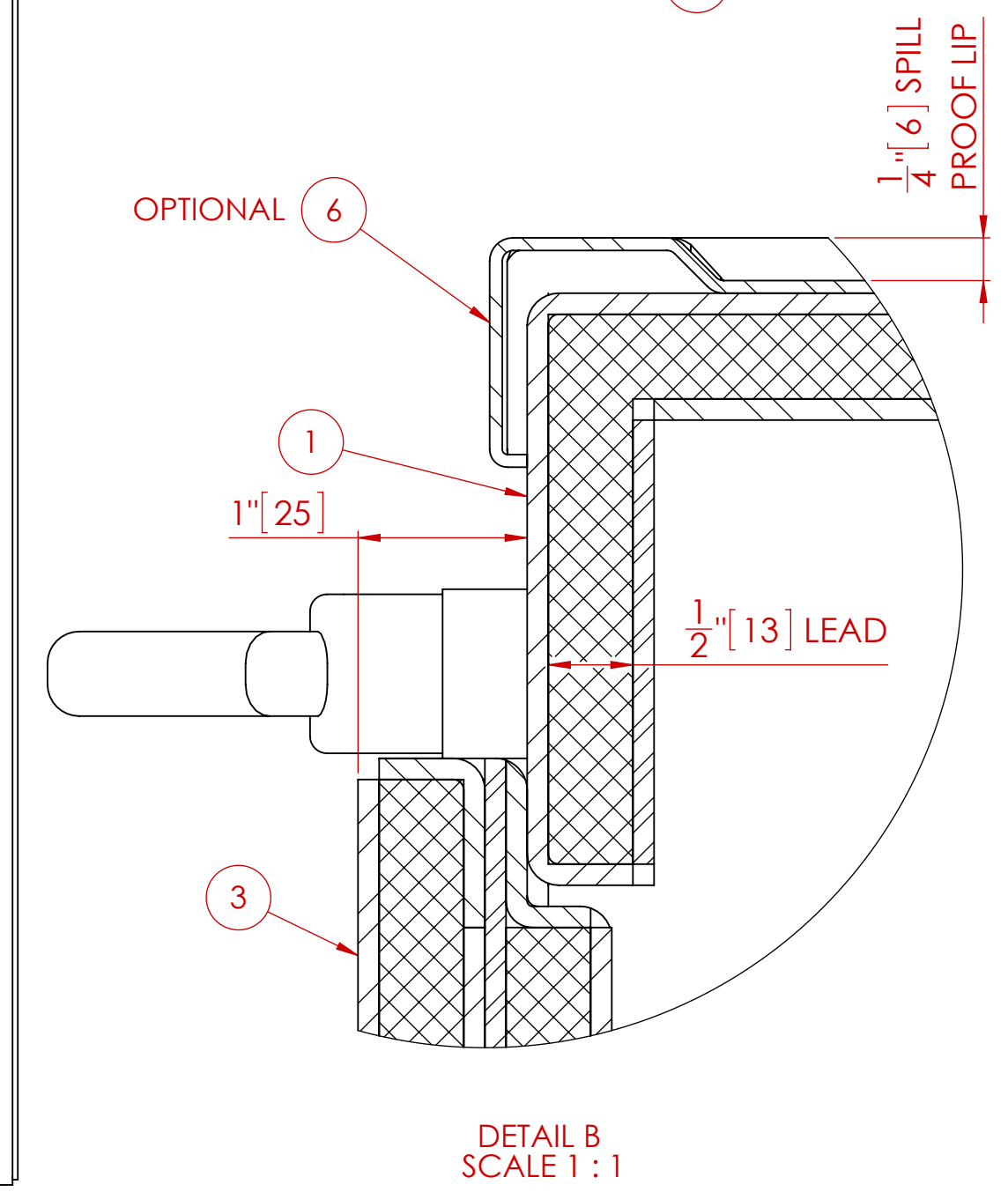
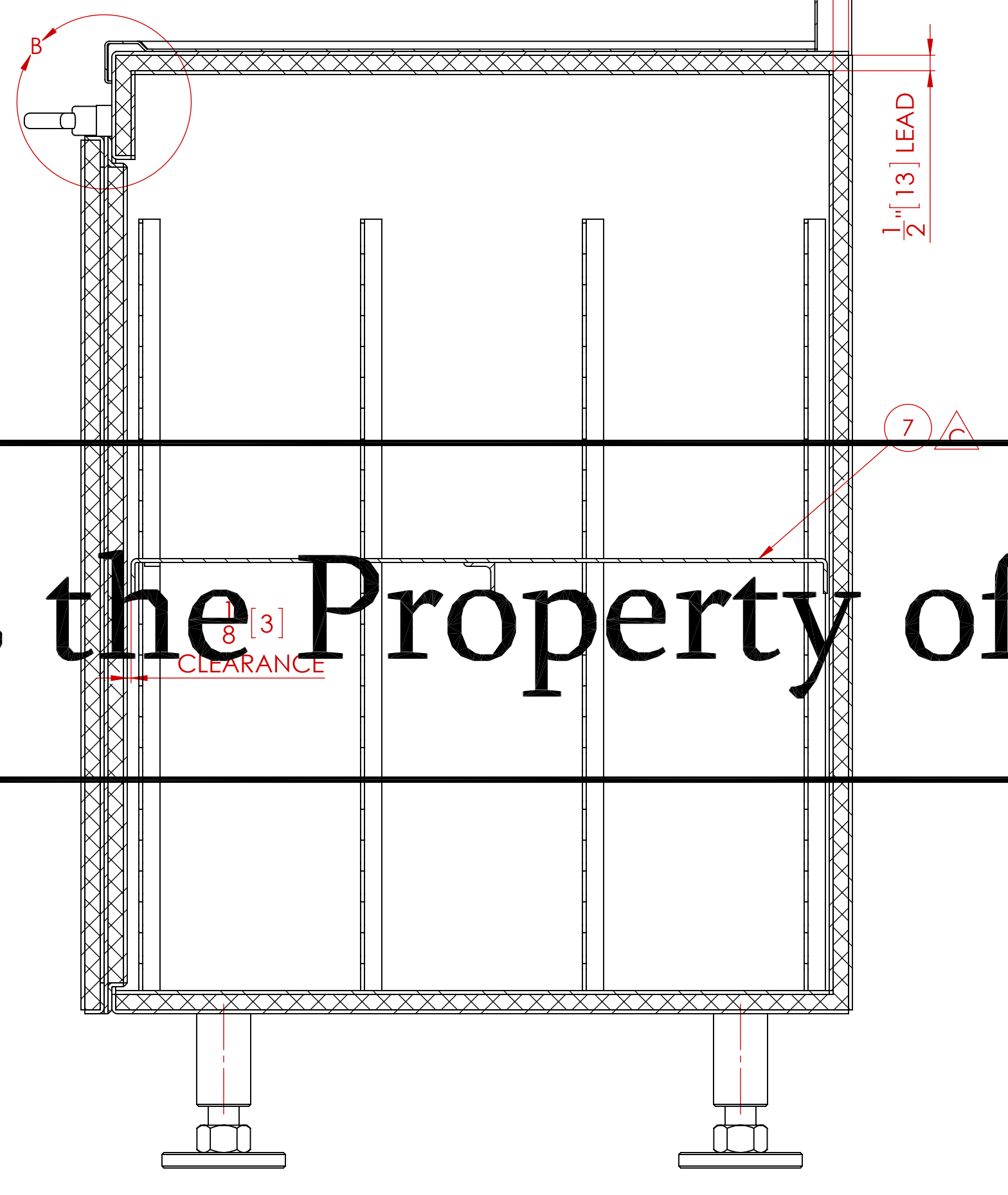
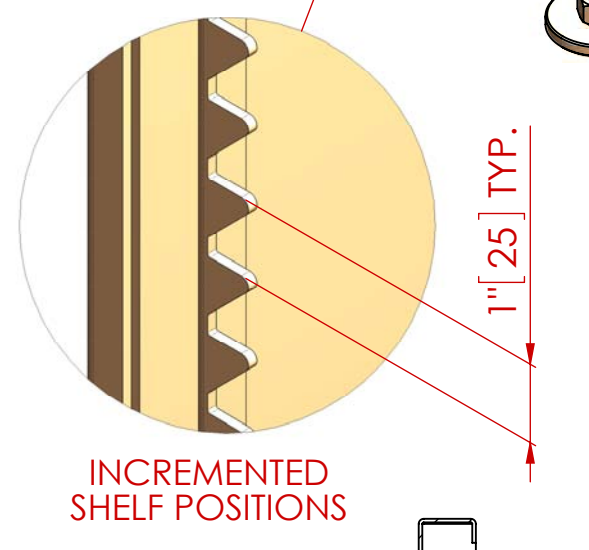
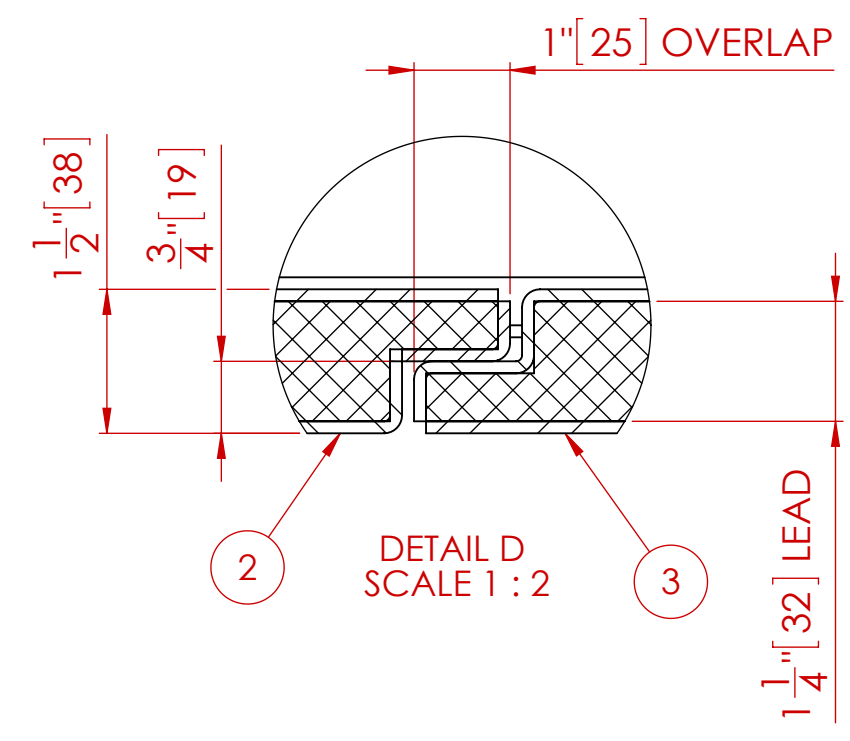
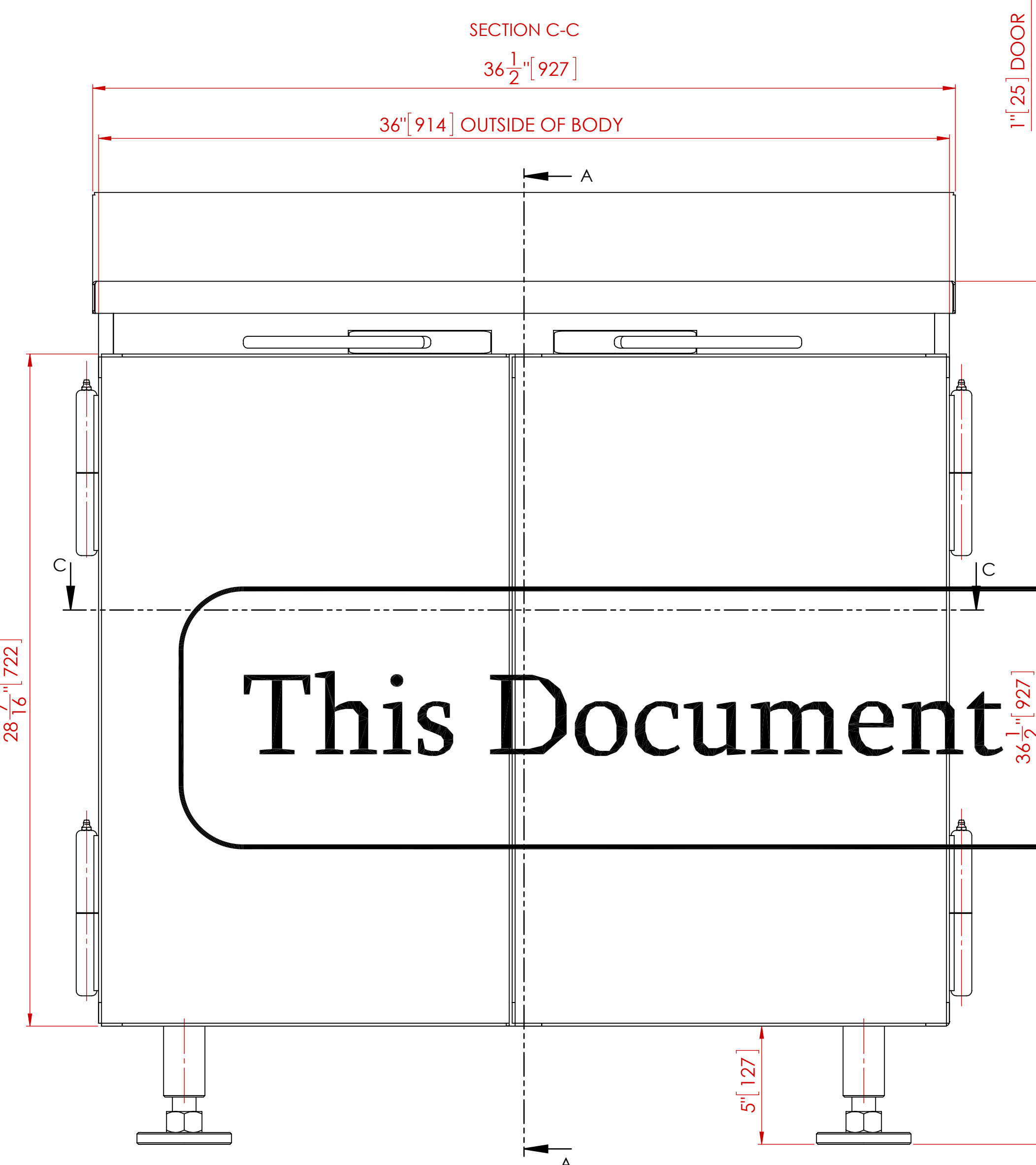
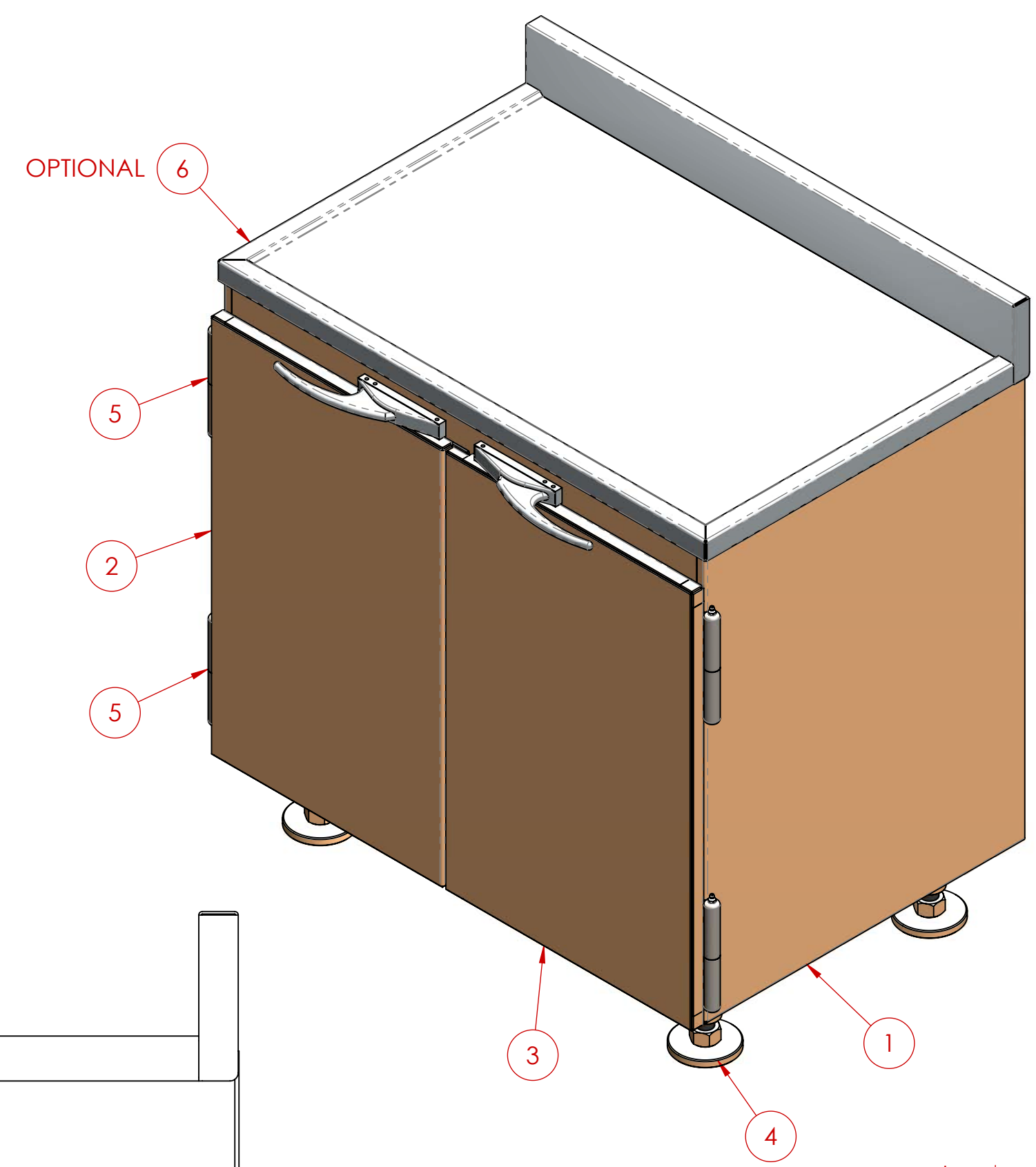
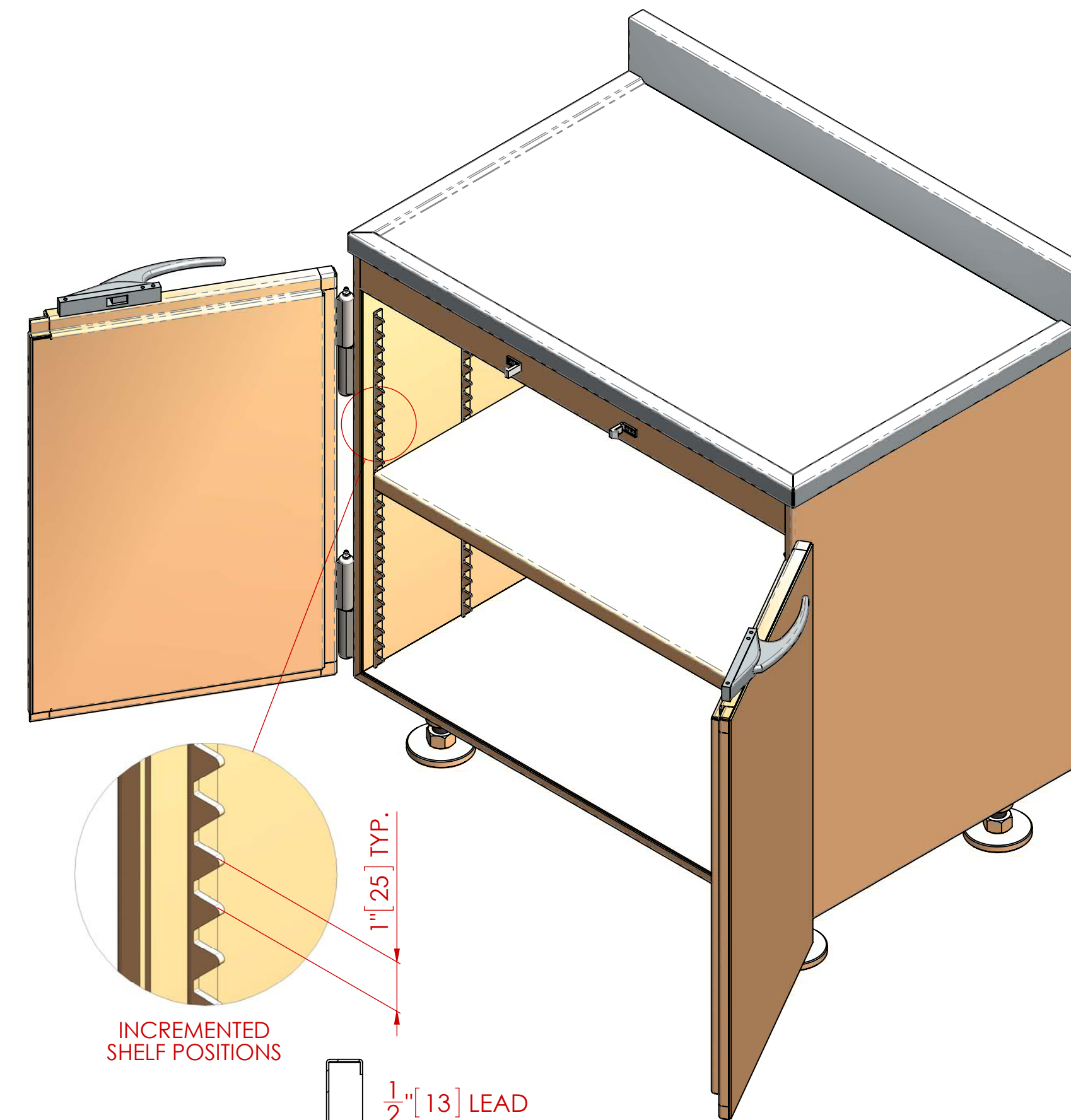


CUSTOMER APPROVAL ENDORSEMENT

APPROVED AS SHOWN
 APPROVED WITH CHANGES SHOWN

BY: _____ DATE: _____
 TITLE: _____
 COMPANY: _____
 COMMENTS: _____

ITEM NO.	QTY	PART NUMBER	DESCRIPTION
1	1	MS-PEBC-0.5-01-00	BODY
2	1	MS-PEBC-0.5-02-08	DOOR - LEFT HAND
3	1	MS-PEBC-0.5-02-00	DOOR - RIGHT HAND
4	4	MS-DC-0.5-08-00	LEG
5	4	-----	7" HINGE C/W GREASE NIPPLE
6	1	MS-10-02	OPTIONAL CABINET TOP
7	1	MS-PEBC-0.5-04-00	ADJUSTABLE SHELF



This Document is the Property of MarShield

NOTES:
 1. ALL UNITS ARE INCHES [mm] UNLESS OTHERWISE SPECIFIED
 2. ITEM 6 (CABINET TOP) IS OPTIONAL

TOTAL LEAD WEIGHT	TOTAL CABINET WEIGHT (INCLUDING LEAD)
1,342 LBS. (610 kg)	1,819 LBS. (827 kg)

REV.	DESCRIPTION	DATE	APPROVED
C	ITEM 2 WAS MS-PEBC-0.5-02-00	2/3/2014	M.S.D.
B	ADDED ITEM 7, SHELF WAS FIXED	2/27/2013	M.S.D.
A	RELEASED FOR CUSTOMER REVIEW & APPROVAL	1/17/2013	M.S.D.

UNLESS OTHERWISE SPECIFIED

DO NOT SCALE DRAWING
 DIMENSIONS SHOWN IN PARENTHESES ARE FOR REFERENCE ONLY (XXI)
 DIMENSIONS ARE IN INCHES (mm)
 TOLERANCES APPLY AS SHOWN BELOW
 X = ±0.005
 Y = ±0.010
 Z = ±0.005
 ANGLES ± 0.5°

ALL MACHINED SURFACES TO BE $\sqrt{10}$
 ALL WELD SPECIFICATIONS PER WELD SHOP

PROPRIETARY
 NO PART OF THIS DOCUMENT MAY BE REPRODUCED, STORED IN A RETRIEVAL SYSTEM, OR TRANSMITTED IN ANY FORM, WITHOUT THE WRITTEN PERMISSION OF MarShield - MGR Metall Company DIVISION OF Marshell Metal Industries Ltd.

SolidWorks MAINTAINED DATA CHANGES SHALL BE INCORPORATED ELECTRONICALLY BY THE DESIGN ACTIVITY

Model Number: _____

Customer/Dealer: _____

Drawn by: M.S.D. Date: 1/16/2013

Checked by: _____ Date: _____

Approved by: _____ Date: _____

MarShield Custom Radiation Protection, Shielding and Storage

PREPARATION ENCLOSURE BASE CABINET ASSEMBLY

MS-PEBC-0.5-36.5-24-36.5

Scale: 1:4 Weight: 1 SHEET 1 OF 1