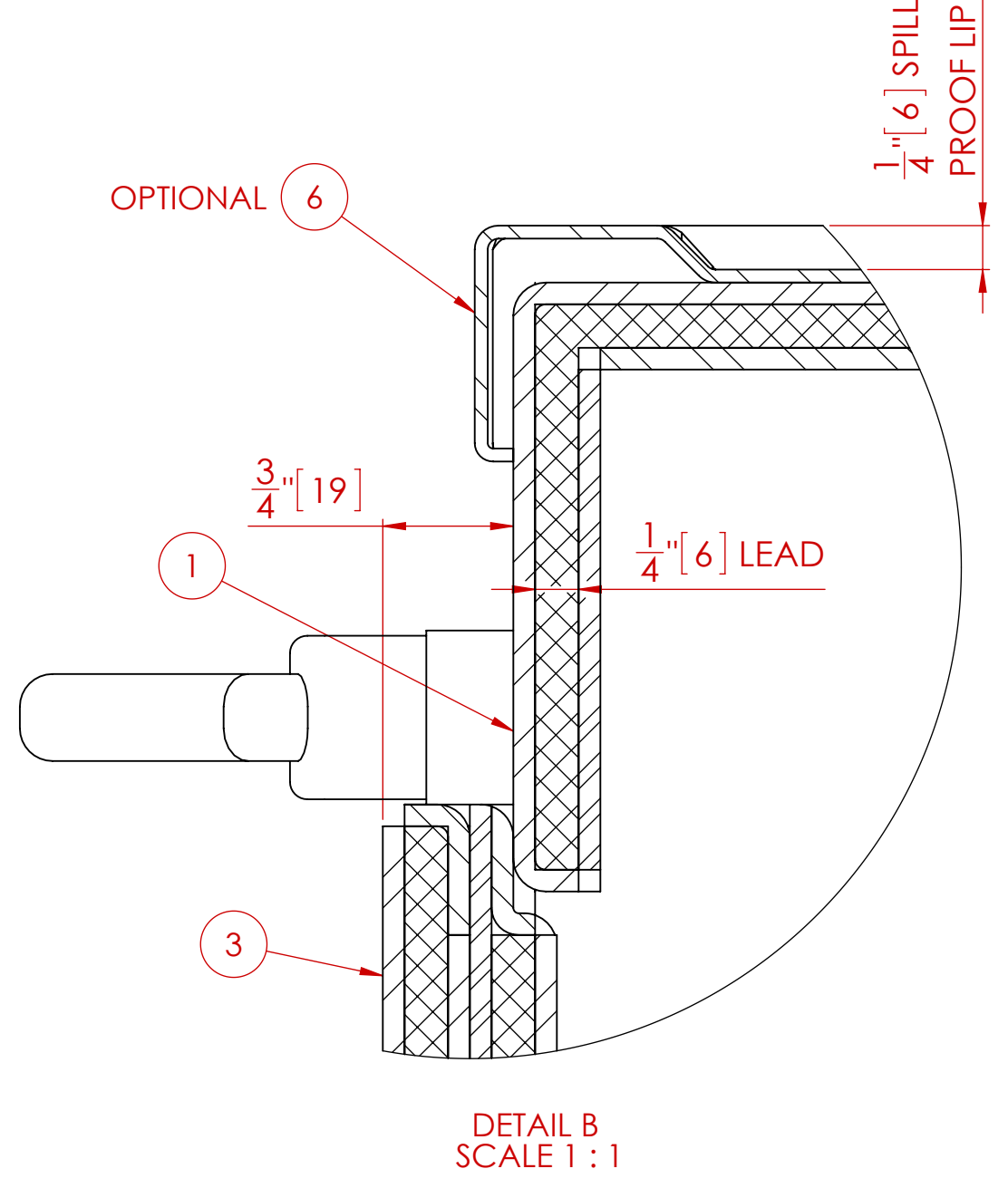
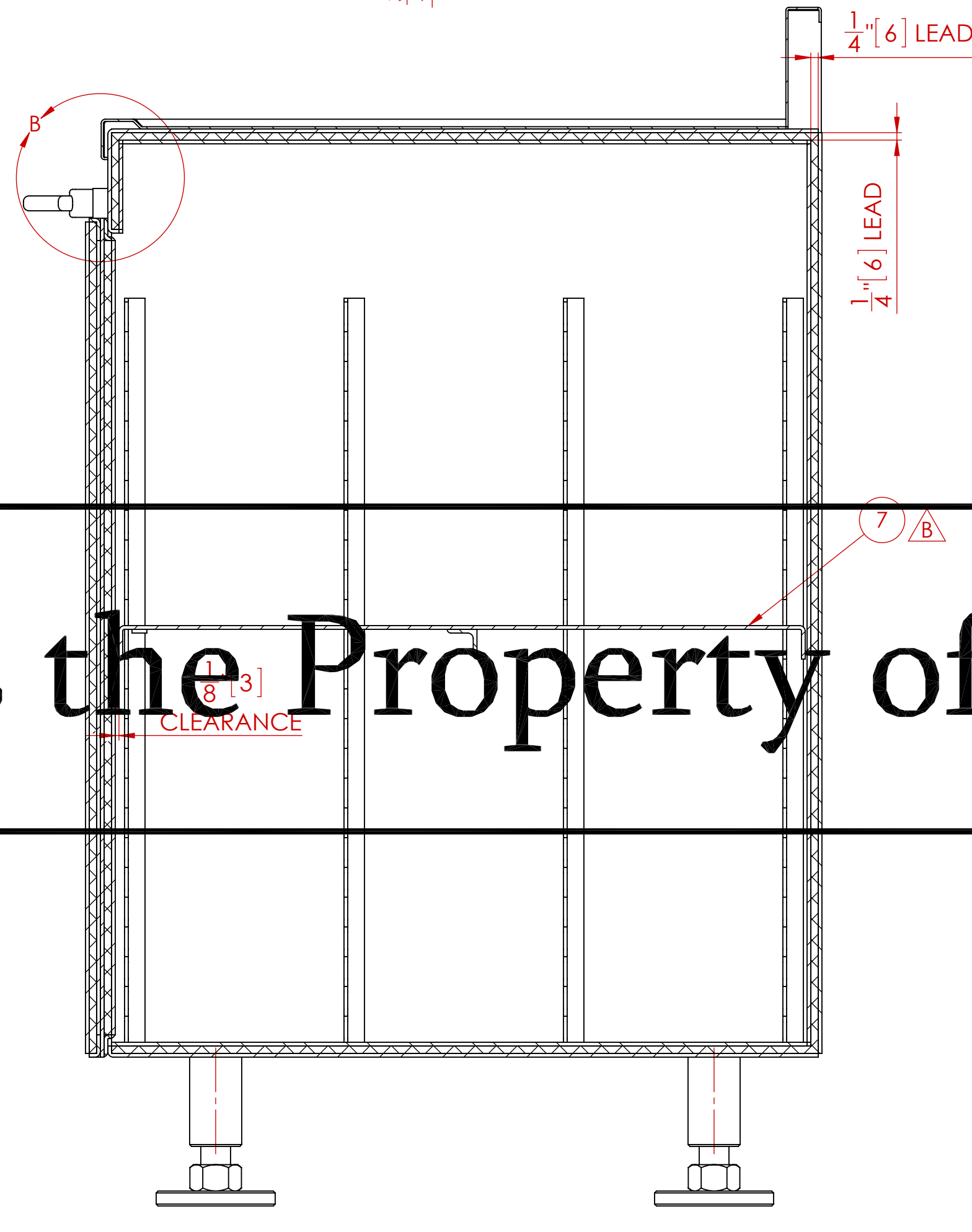
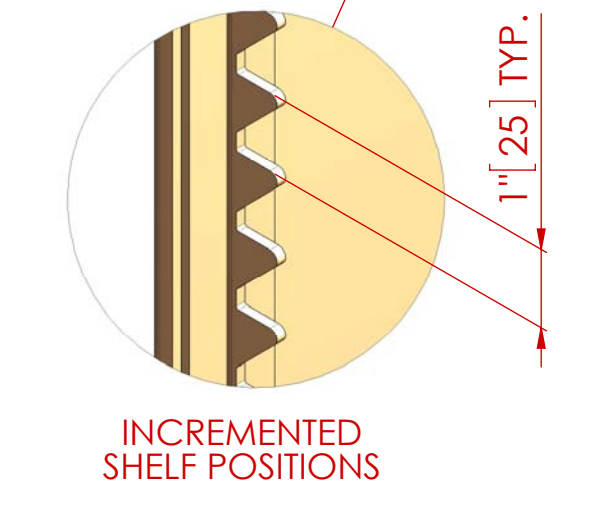
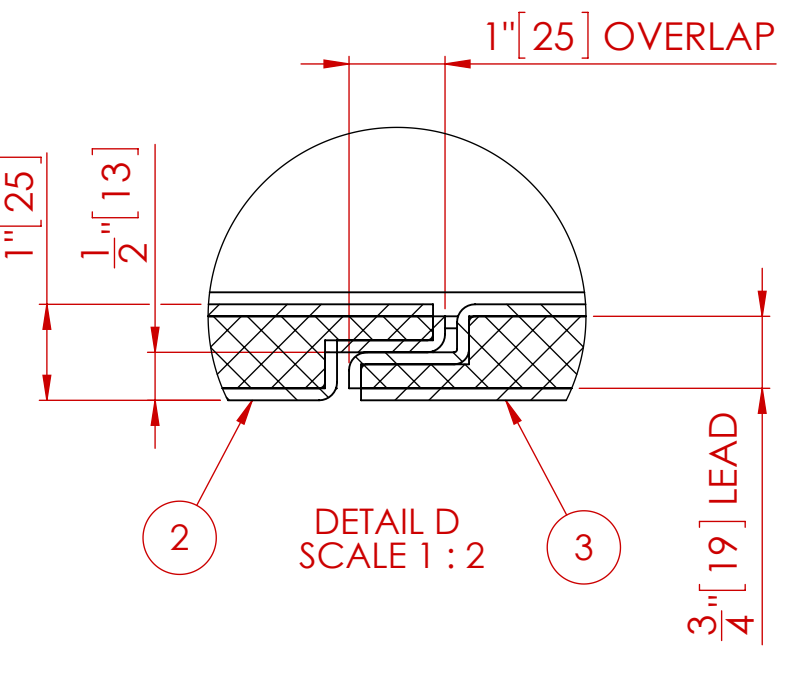
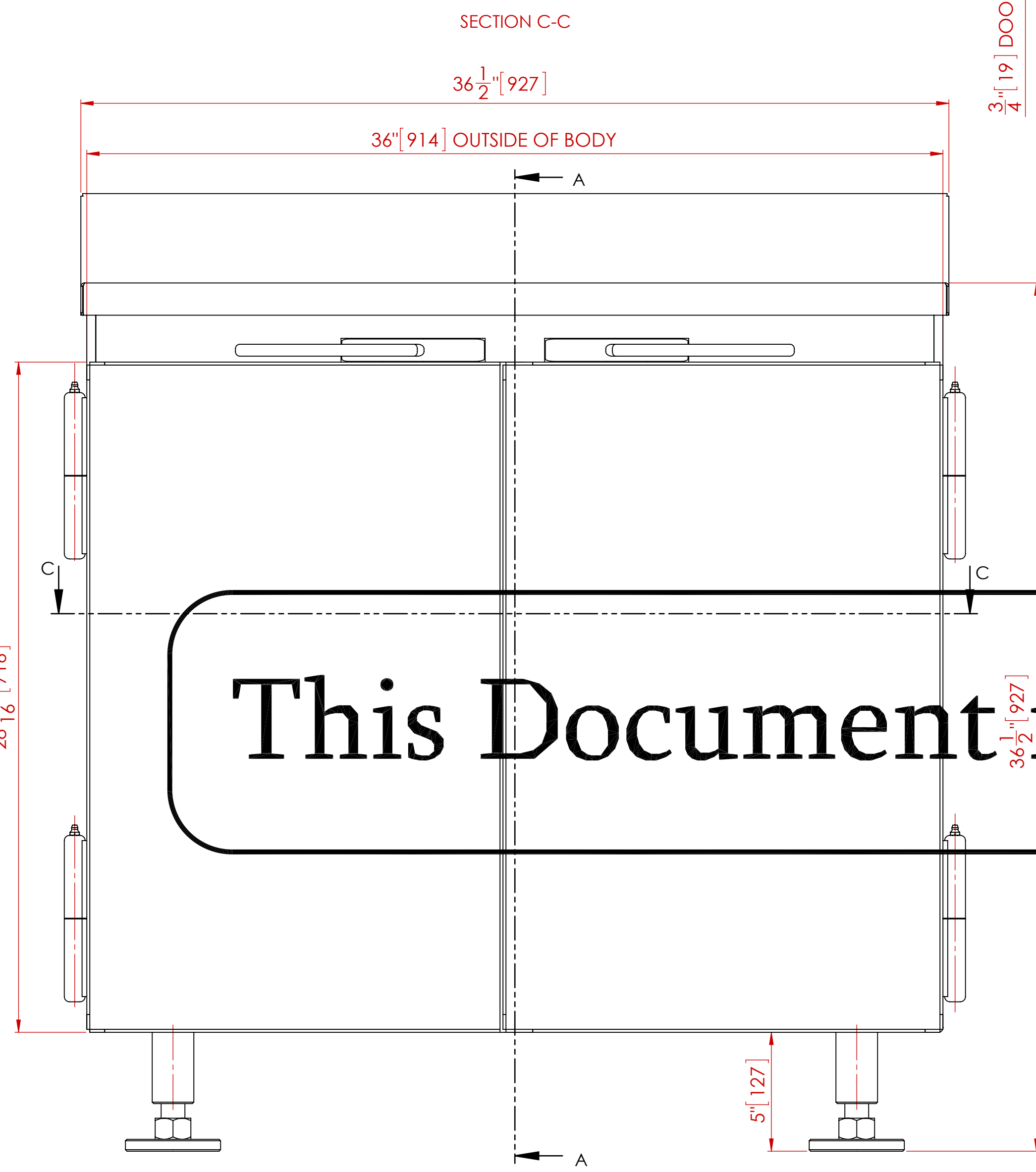
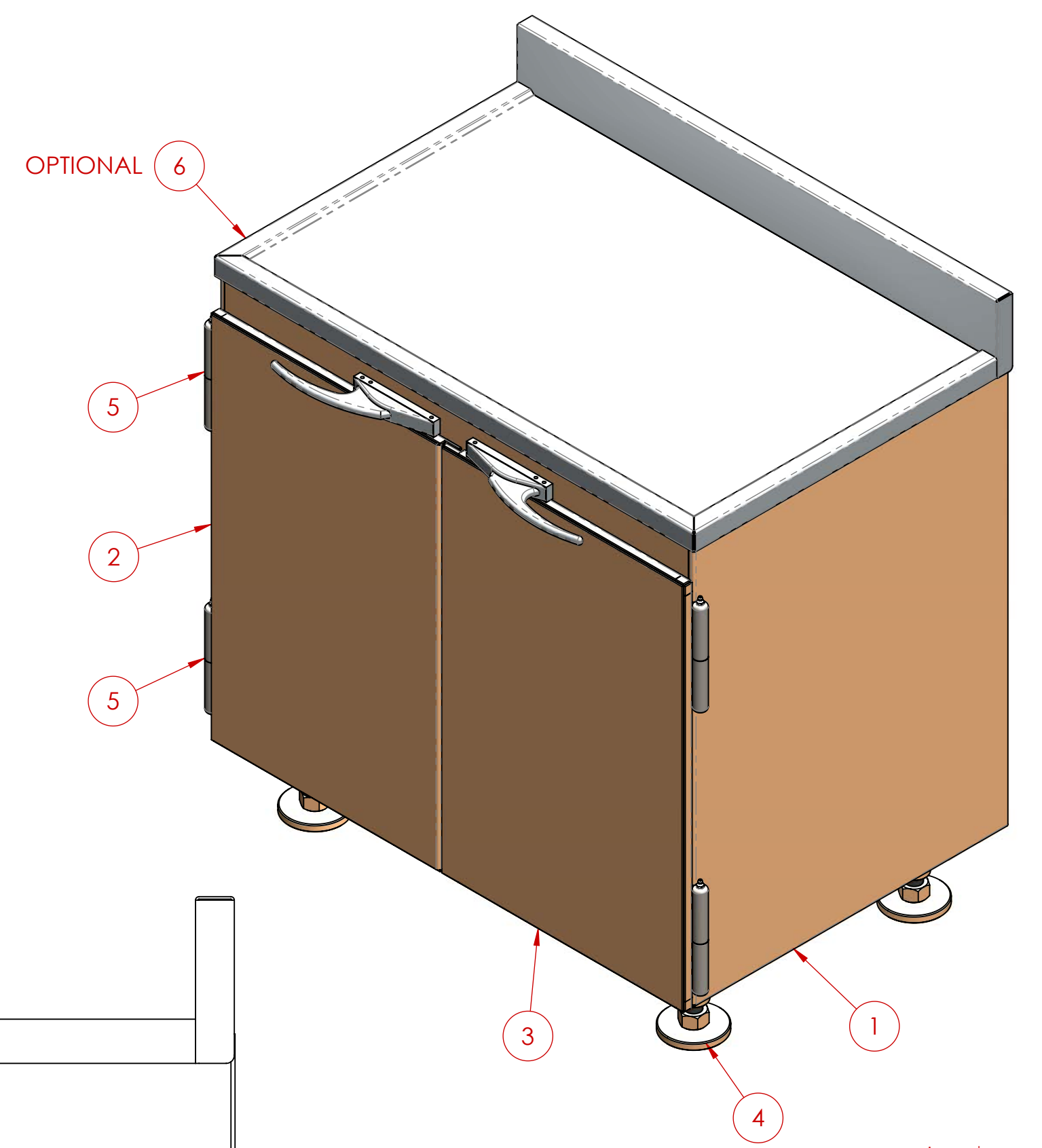
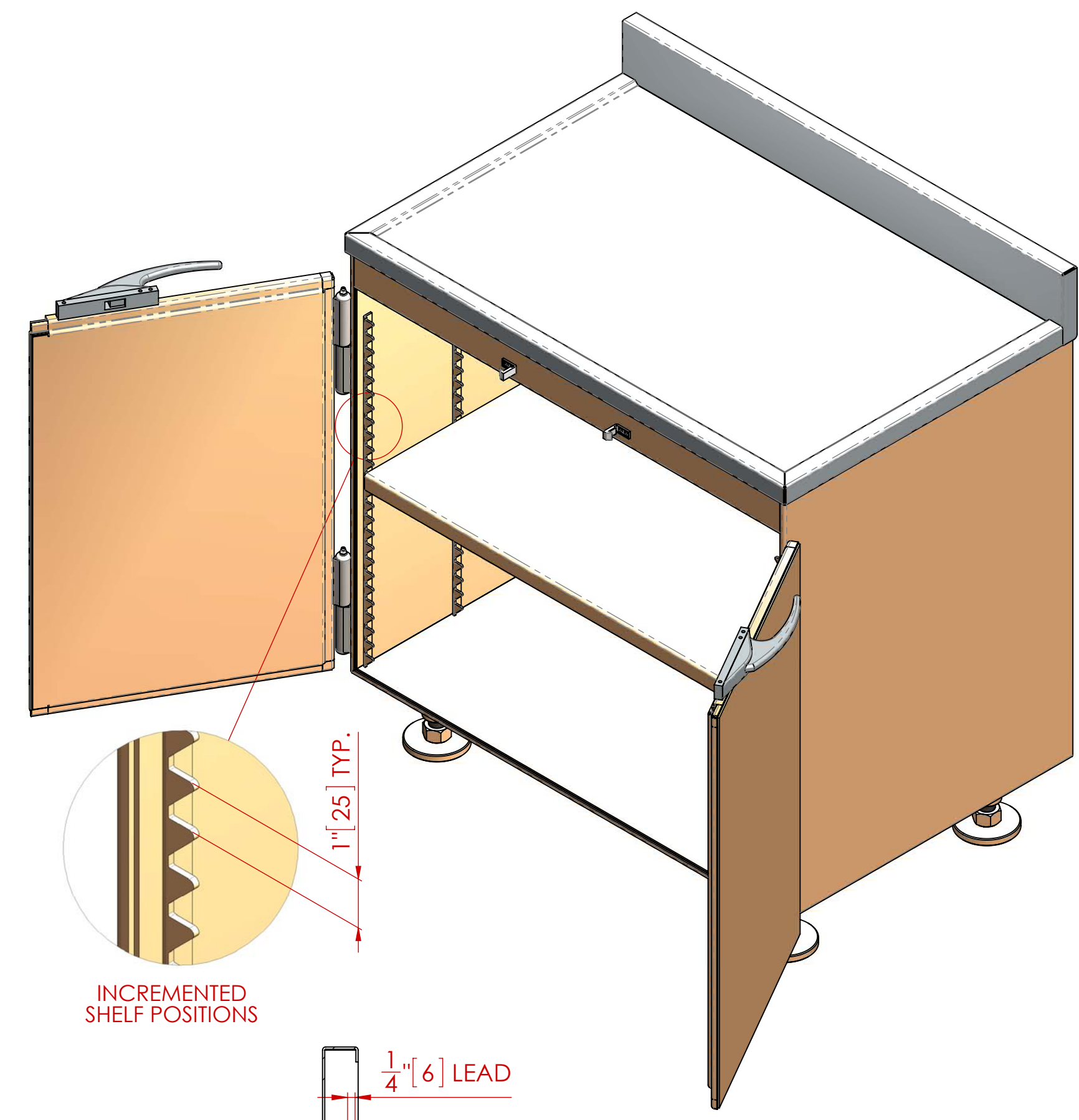


CUSTOMER APPROVAL ENDORSEMENT

APPROVED AS SHOWN
 APPROVED WITH CHANGES SHOWN

BY: _____ DATE: _____
 TITLE: _____
 COMPANY: _____
 COMMENTS: _____

ITEM NO.	QTY	PART NUMBER	DESCRIPTION
1	1	MS-PEBC-0.25-01-00	BODY
2	1	MS-PEBC-0.25-02-08	DOOR - LEFT HAND
3	1	MS-PEBC-0.25-02-00	DOOR - RIGHT HAND
4	4	MS-DC-0.5-08-00	LEG
5	4	-----	7" HINGE C/W GREASE NIPPLE
6	1	MS-10-02	OPTIONAL CABINET TOP
7	1	MS-PEBC-0.25-04-00	ADJUSTABLE SHELF



This Document is the Property of MarShield

NOTES:
 1. ALL UNITS ARE INCHES [mm] UNLESS OTHERWISE SPECIFIED
 2. ITEM 6 (CABINET TOP) IS OPTIONAL

TOTAL LEAD WEIGHT	TOTAL CABINET WEIGHT (INCLUDING LEAD)
728 LBS. (331 kg)	1,205 LBS. (548 kg)

REV.	DESCRIPTION	DATE	APPROVED
B	ITEM 2 WAS MS-PEBC-0.25-02-00 ADDED ITEM 7, SHELF WAS FIXED	2/3/2014	M.S.D.
A	ADDED WEIGHTS TABLE	2/27/2013	M.S.D.

UNLESS OTHERWISE SPECIFIED

DO NOT SCALE DRAWING
DIMENSIONS SHOWN IN PARENTHESES ARE FOR REFERENCE ONLY (XX)
DIMENSIONS ARE IN INCHES (mm)
TOLERANCES APPLY AS SHOWN BELOW
X = ± 0.005
XX = ± 0.010
XXX = ± 0.020
ANGLES ± 0.5°

ALL MACHINED SURFACES TO BE $\sqrt{10}$
ALL WELD SPECIFICATIONS PER WELD SHOP

PROPRIETARY
NO PART OF THIS DOCUMENT MAY BE REPRODUCED, STORED IN A RETRIEVAL SYSTEM, OR TRANSMITTED IN ANY FORM, WITHOUT THE WRITTEN PERMISSION OF MarShield - MGR Metal Company DIVISION OF Marshell Metal Industries Ltd.

SolidWorks MAINTAINED DATA
CHANGES SHALL BE INCORPORATED ELECTRONICALLY BY THE DESIGN ACTIVITY

Model Number: _____
 Title: PREPARATION ENCLOSURE BASE CABINET ASSEMBLY
 Customer/Dealer: _____
 Drawn By: M.S.D. DATE: 2/8/2013
 Checked By: _____ DATE: _____
 Approved: _____ DATE: _____

MS-PEBC-0.25-36.5-24-36.5

SCALE: 1:4 WEIGHT: 1 SHEET 1 OF 1

